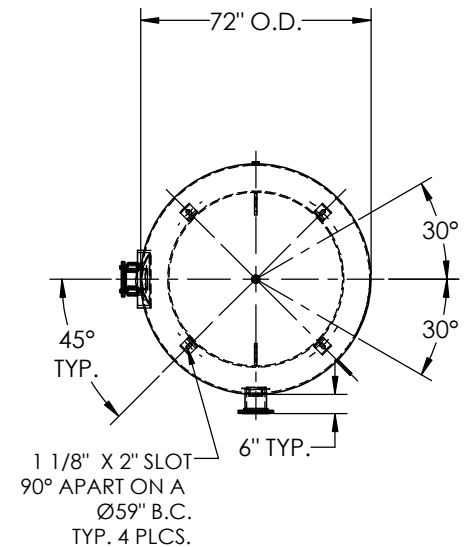
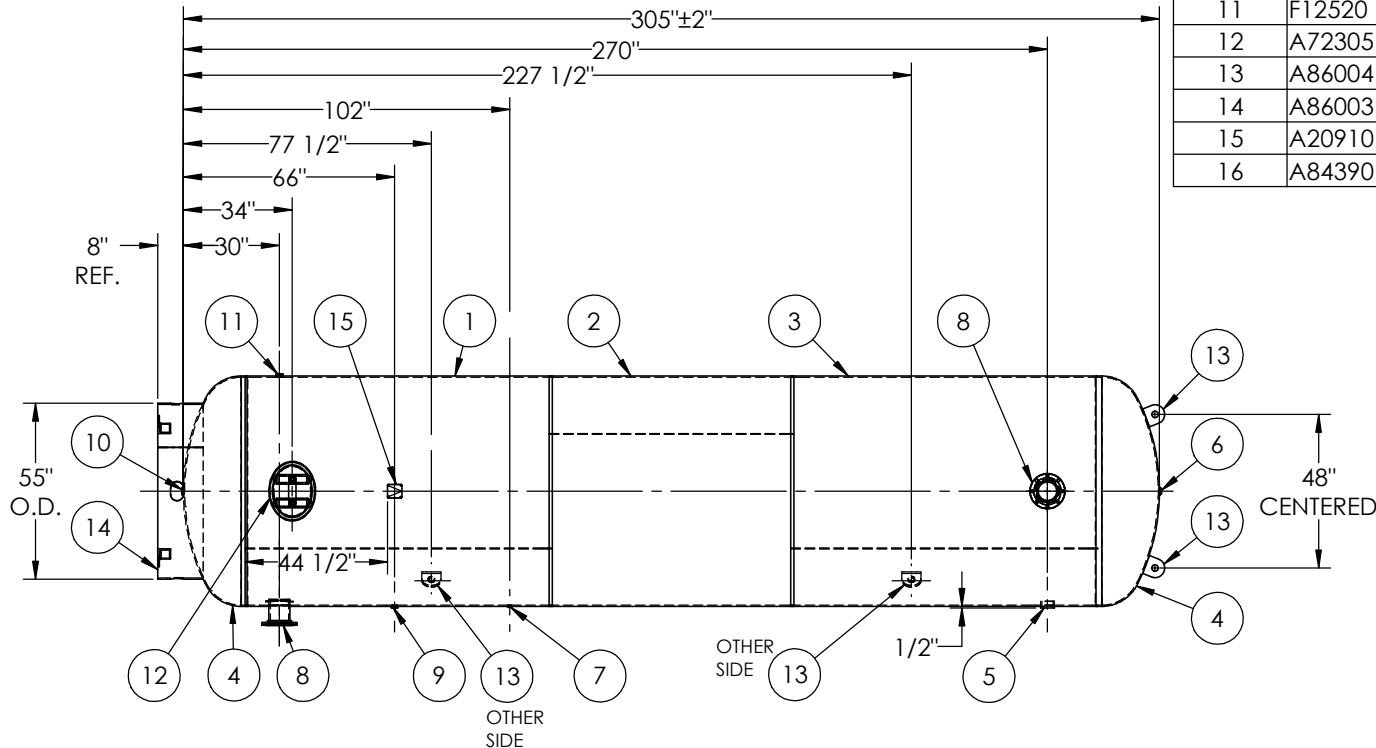


ITEM NO.	PART NO.	DESCRIPTION	QTY.
1	305653-SL1	SHELL LAYOUT FOR 72" TANK	1
2	305653-SL2	SHELL LAYOUT FOR 72" TANK	1
3	305653-SL3	SHELL LAYOUT FOR 72" TANK	1
4	H44804	.340 MIN. 72" O.D. 2:1 ELLIP. BEV. HEAD	2
5	F10400	3"-NPT HALF COUPLING	1
6	F10370	1"-NPT FLAT FLANGE	1
7	F31826	1/4"-NPT FLAT FLANGE	1
8	A99220	6NPS RFSO ASY.	2
9	F30263	1"-NPT RADIAL FLANGE	1
10	F10360	1 1/4"-NPT FLAT FLANGE	1
11	F12520	1 1/4"-NPT RADIAL FLANGE	1
12	A72305	12" X 16" X 3/4" X 4" 300# MANWAY	1
13	A86004	STANDARD 1" X 6" X 6" LIFT LUG	4
14	A86003	BASERING ASSEMBLY	1
15	A20910	ASME DATA PLATE	1
16	A84390.72	6" PIPE BACKING RING	2



**NOTES:**

- BREAK ALL EXPOSED INTERIOR NOZZLE EDGES.
- ALL FLANGE BOLT HOLES TO STRADDLE VESSEL CENTERLINES.

SPECIFICATIONS	
O.D. 72 LGTH. 305	MAWP 165 PSI @ 400°F
WT. 8633 LBS.	
S.A. 501 SQ.FT.	
GAL. 5000 CU.FT.668.5 CRN: E01893.6	
CODE: ASME Section VIII, Div.1, LATEST EDITION	W
STD. TOLERANCES: M-2461 (UNLESS OTHERWISE NOTED)	EXMT UG20(f) CORR ALW 0 SH 0 HD
	WELD DETAILS: M-1932

**MANCHESTER TANK**

**VERTICAL AIR RECEIVER**

REVISIONS			
REV.	BY	DESCRIPTION	DATE
A	BAK		
B	BS		
C	GJ		
D	UG		

DRAWN BY: JR	DATE:
APPR. BY: JR	DATE:
SCALE: NONE	DRWG NO. 305653

RELEASED FOR PRODUCTION  
 Q.C. \_\_\_\_\_ DATE \_\_\_\_\_