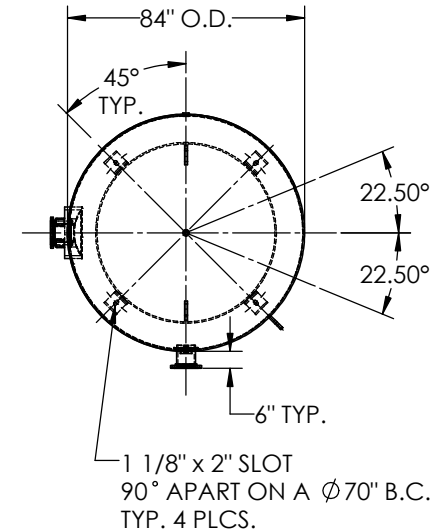
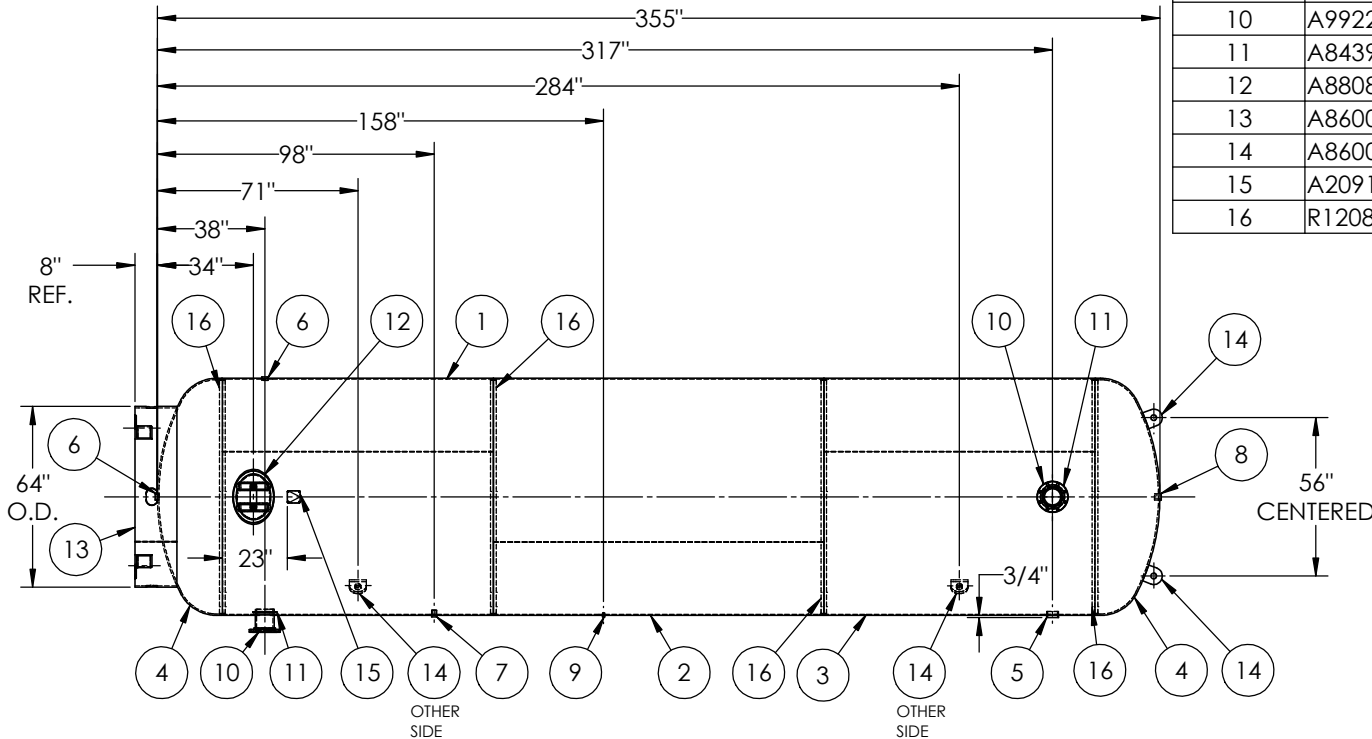


ITEM NO.	PART NO.	DESCRIPTION	QTY.
1	A305138-SL1	SHELL LAYOUT FOR 84" TANK	1
2	A305138-SL2	SHELL LAYOUT FOR 84" TANK	1
3	A305138-SL3	SHELL LAYOUT FOR 84" TANK	1
4	H45814	.406 MIN. 84" O.D. 2:1 ELLIP. BEV. HEAD	2
5	F10400	3"-NPT HALF COUPLING	1
6	F10140	1 1/4"-NPT HALF COUPLING	2
7	F10896	1"-NPT FULL COUPLING	1
8	F30228	1"-NPT 6000# FULL COUPLING	1
9	F12470	1/4"-NPT FULL COUPLING	1
10	A99220	6NPS RFSO ASY.	2
11	A84390.84	6" PIPE BACKING RING	2
12	A88082	12" X 16" X 1" X 6" 300# MANWAY	1
13	A86006	BASERING ASSEMBLY	1
14	A86004	1" LIFT LUG STD VER	4
15	A20910	ASME DATA PLATE	1
16	R12080	BACKING RING FOR 84" TANK	4



**NOTES:**

- ALL FLANGE BOLT HOLES TO STRADDLE CENTER LINE.
- BREAK ALL EXPOSED INTERIOR NOZZLE EDGES.

**SPECIFICATIONS**

O.D. 84 LGTH. 355  
WT. 12404 LBS.  
S.A. 682.3SQ.FT.  
GAL. 8000 CU.FT.1070 CRN: N/A  
CODE: ASME Section VIII, Div.1, LATEST EDITION  
STD. TOLERANCES: M-2461 (UNLESS OTHERWISE NOTED)

MAWP 150 PSI @ 400°F

EXMT UG-20(f) CORR ALW 0 SH 0 HD  
WELD DETAILS: M-1932



**VERTICAL AIR RECEIVER**

REV.	BY	DESCRIPTION	DATE	APP.
A	JR			JR
B	JC			JC
C	JC			JC
D	RB			JC
E	HD			DS
F	RK			MK

DRAWN BY:	JR	DATE:	
APPR. BY:	JR	DATE:	
SCALE:	NONE	DRWG NO.	<b>305138</b>

RELEASED FOR PRODUCTION  
Q.C. \_\_\_\_\_ DATE \_\_\_\_\_

