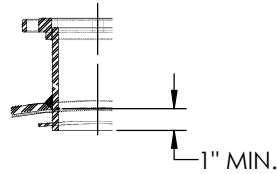
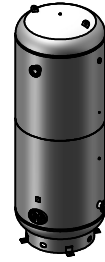


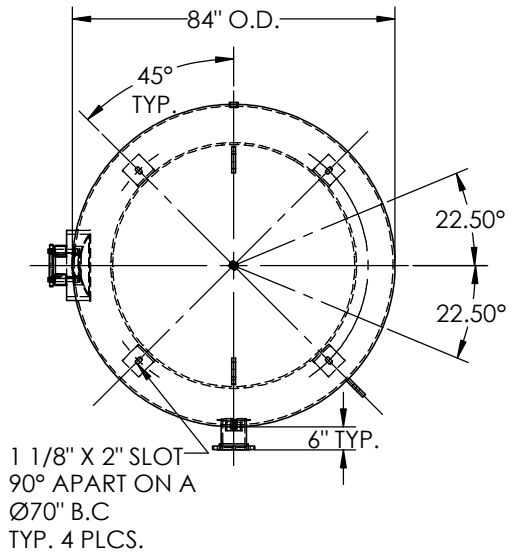
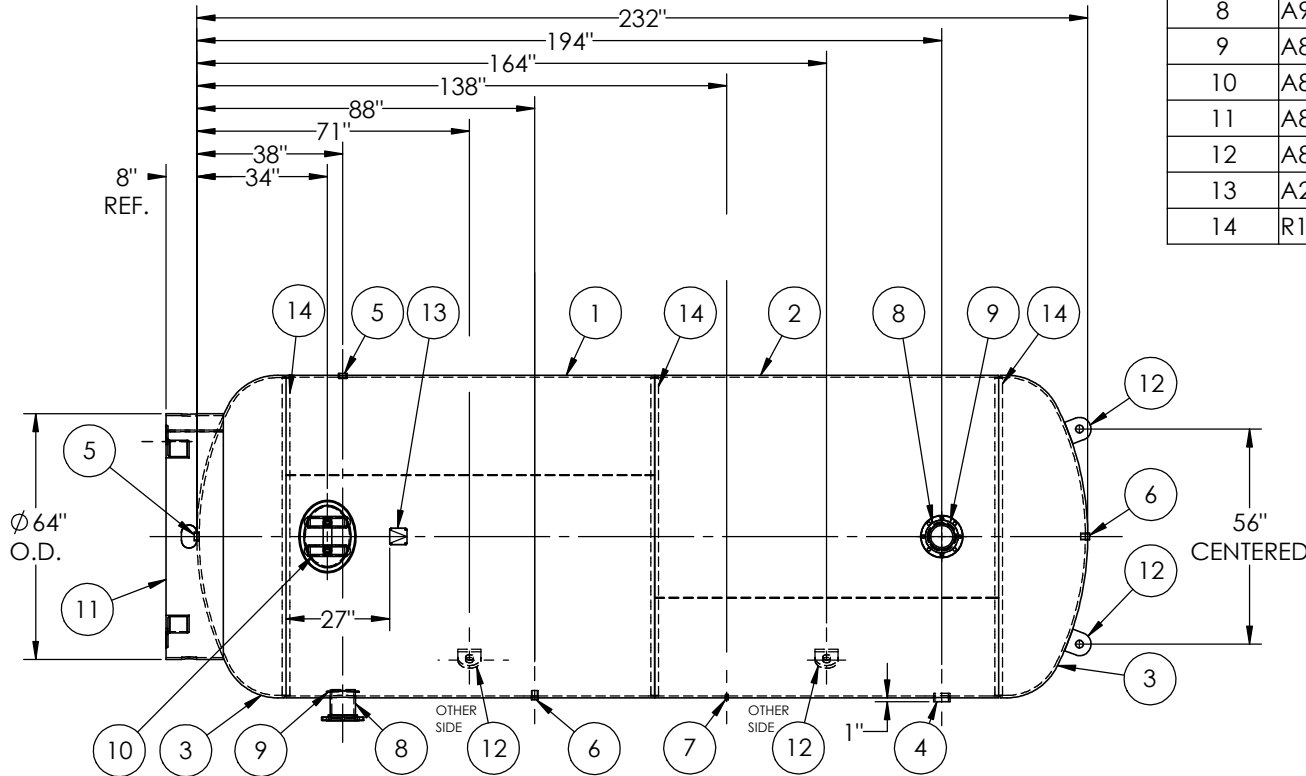
MANWAY DETAIL



6" NOZZLE DETAIL



ITEM NO.	PART NO.	DESCRIPTION	QTY.
1	A304718-SL1	SHELL LAYOUT FOR 84" TANK	1
2	A304718-SL2	SHELL LAYOUT FOR 84" TANK	1
3	H46343	.531 MIN. 84" O.D. 2:1 ELLIP. BEV. HEAD	2
4	F10400	3"-NPT HALF COUPLING	1
5	F10140	1 1/4"-NPT HALF COUPLING	2
6	F10896	1"-NPT FULL COUPLING	2
7	F12470	1/4"-NPT FULL COUPLING	1
8	A99220	6NPS RFSO ASY.	2
9	A84390.84	6" PIPE BACKING RING	2
10	A88082	12" X 16" X 1" X 6" 300# MANWAY	1
11	A86006	BASERING ASSEMBLY	1
12	A86004	1" LIFT LUG STD VER	4
13	A20910	ASME DATA PLATE	1
14	R12080	BACKING RING FOR 84" TANK	3



NOTES:

- SEE G 1020 FOR TACK SPECS.
- ALL FLANGE BOLT HOLES TO STRADDLE CENTER LINE.
- BREAK ALL EXPOSED INTERIOR NOZZLE EDGES.

CALC FILE NO. PVCS84C2572
ATLU00X0006
ATSK00X0007

SPECIFICATIONS

O.D. 84 LGTH. 232
WT. 13152 LBS.
S.A. 455.01SQ.FT.
GAL. 5000 CU.FT. 683.69 CRN: N/A
CODE: ASME Section VIII, Div.1, LATEST EDITION
STD. TOLERANCES: M-2461 (UNLESS OTHERWISE NOTED)

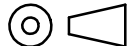
MAWP 200 PSI @ 450°F

EXMT UG-20(f) CORR ALW 0 SH 0 HD
WELD DETAILS: M-1932



VERTICAL AIR RECEIVER

RELEASED FOR PRODUCTION
Q.C. _____ DATE _____



REV.		BY	DESCRIPTION	DATE	APP.
A		JC			JC
B		UG			MK

DRAWN BY: JR	DATE:
APPR. BY: JR	DATE:
SCALE: NONE	DRWG NO. 304718