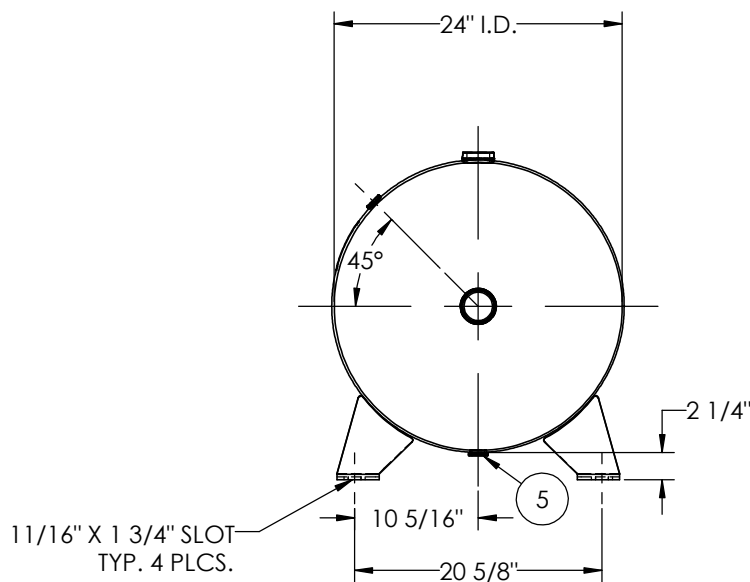
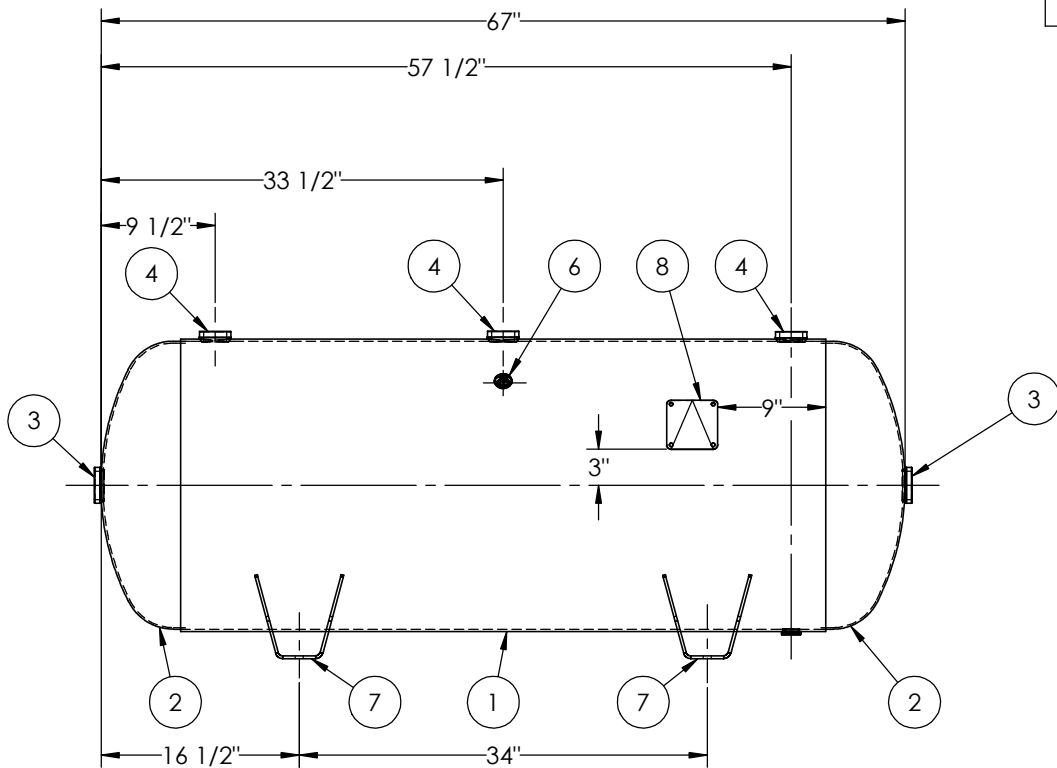


ITEM NO.	PART NO.	DESCRIPTION	QTY.
1	A302479-SL	SHELL LAYOUT FOR 24" I.D. TANK	1
2	H32030	.149 MIN. 24" O.D. 2:1 ELLIP. PLAIN HEAD	2
3	F30316	2"-NPT FLAT FLANGE O-RING	2
4	F30317	1 1/2"-NPT RADIAL FLANGE O-RING	3
5	F31840	3/4"-NPT FLAT FLANGE	1
6	F31826	1/4"-NPT FLAT FLANGE	1
7	A55716	STD. WING FOOT FOR 24" DIA.	4
8	A20910	ASME DATA PLATE	1



NOTES:

RELEASED FOR PRODUCTION
Q.C. _____ DATE _____



SPECIFICATIONS

I.D. 24 LGTH. 67 MAWP 200 PSI @ 400°F
 WT. 310 LBS.
 S.A. 37.5 SQ.FT.
 GAL. 120 CU.FT.16.4 CRN: E7400.2C
 CODE: ASME Section VIII, Div.1, LATEST EDITION EXMT UG20(f) CORR ALW 0 SH 0 HD
 STD. TOLERANCES: M-2461 (UNLESS OTHERWISE NOTED) WELD DETAILS: M-1932

REVISIONS

REV.	BY	DESCRIPTION	DATE	APP.
A	EGB			MR
B	CM			DP
C	BMK			DW
D	MK			MK
E	UG			MK



HORIZONTAL AIR RECEIVER

DRAWN BY: EGB DATE:
 APPR. BY: EGB DATE:
 SCALE: NONE DRWG NO. **302479**