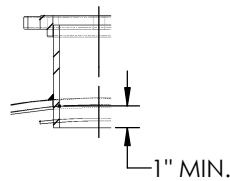
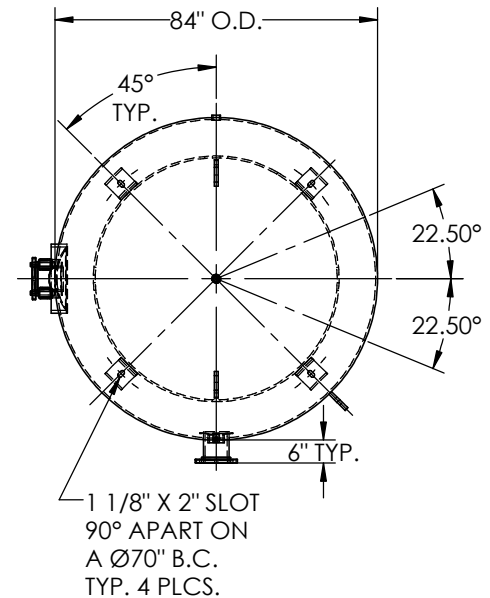
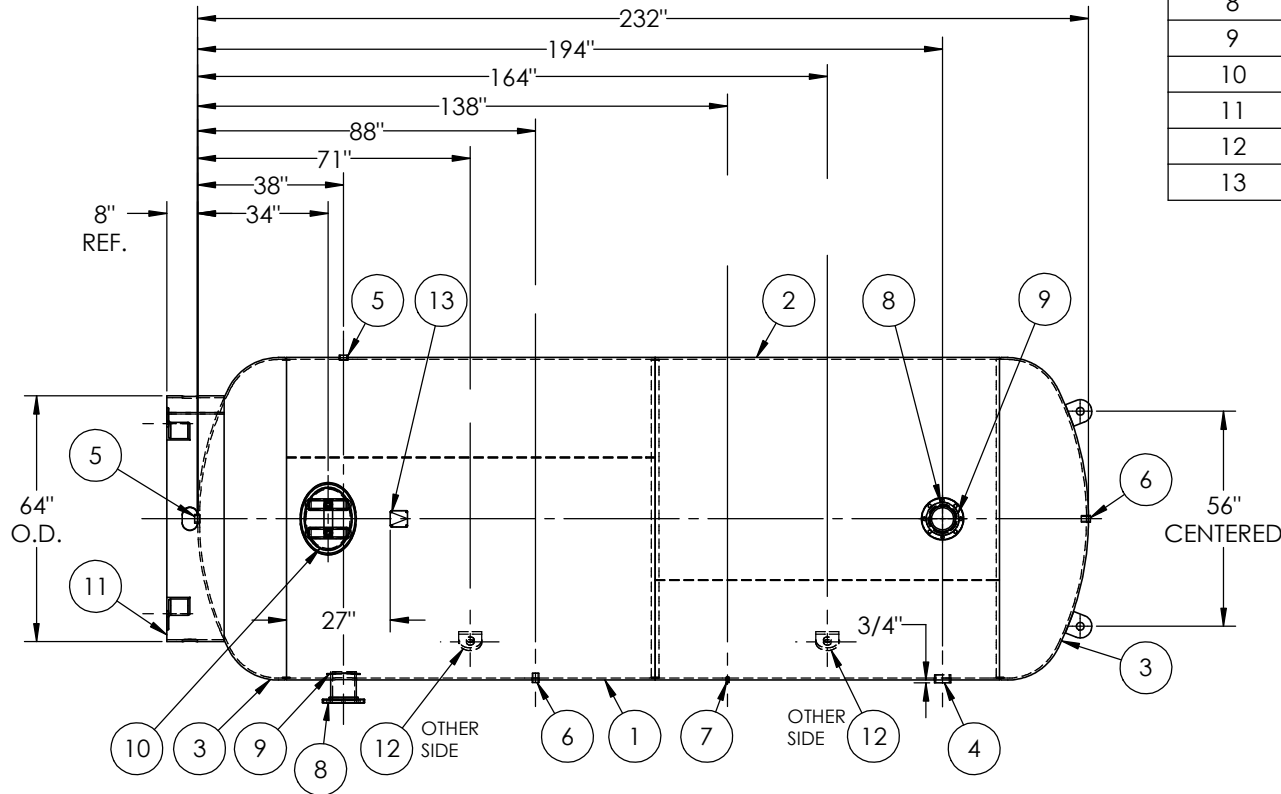
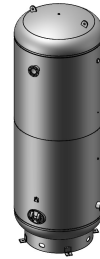


MANWAY DETAIL



6" NOZZLE DETAIL



ITEM NO.	PART NO.	DESCRIPTION	QTY.
1	302459-SL1	SHELL LAYOUT FOR 84" TANK	1
2	302459-SL2	SHELL LAYOUT FOR 84" TANK	1
3	H45814	.406 MIN. 84" O.D. 2:1 ELLIP. BEV. HEAD	2
4	F10400	3"-NPT HALF COUPLING	1
5	F10140	1 1/4"-NPT HALF COUPLING	2
6	F10896	1"-NPT FULL COUPLING	2
7	F12470	1/4"-NPT FULL COUPLING	1
8	A99220	6NPS RFSO ASY.	2
9	A84390.84	6" PIPE BACKING RING	2
10	A72305	12" X 16" X 3/4" X 4" 300# MANWAY	1
11	A86006	BASERING ASSEMBLY	1
12	A86004	1" LIFT LUG STD VER	4
13	A20910	ASME DATA PLATE	1

**NOTES:**

- SEE G1020 FOR TACK SPECS.
- ALL FLANGE BOLT HOLES TO STRADDLE CENTER LINE.
- BREAK ALL EXPOSED INTERIOR NOZZLE EDGES.
- CUSTOM VERSION OF PN 302459 FOR T&VB USE DESIGN CALC 302459 T&VB.

**SPECIFICATIONS**

O.D. 84 LGTH. 232  
 WT. 8596 LBS.  
 S.A. 455.01SQ.FT.  
 GAL. 5000 CU.FT.683.69 CRN: N/A  
 CODE: ASME Section VIII, Div.1, LATEST EDITION  
 STD. TOLERANCES: M-2461 (UNLESS OTHERWISE NOTED)

MAWP 165 PSI @ 450°F  
 W  
 EXMT UG20(f) CORR ALW 0 SH 0 HD  
 WELD DETAILS: M-1932



**VERTICAL AIR RECEIVER**

RELEASED FOR PRODUCTION  
 Q.C. \_\_\_\_\_ DATE \_\_\_\_\_

REVISONS		DATE	APP.
REV.	BY	DESCRIPTION	
A	UG		MK

DRAWN BY: JC	DATE:
APPR. BY: JC	DATE:
SCALE: NONE	DRWG NO. <b>302459 T&amp;VB</b>