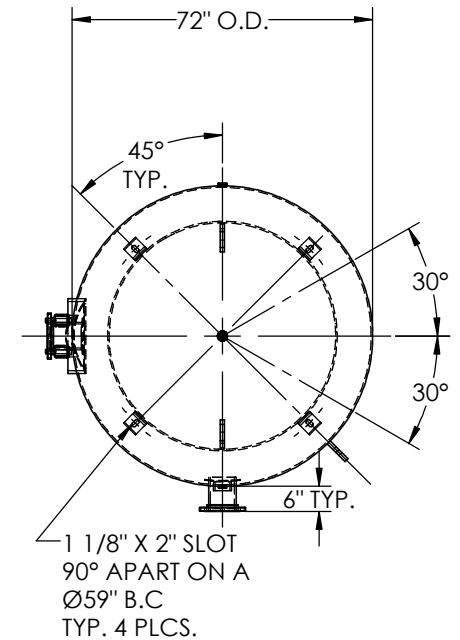
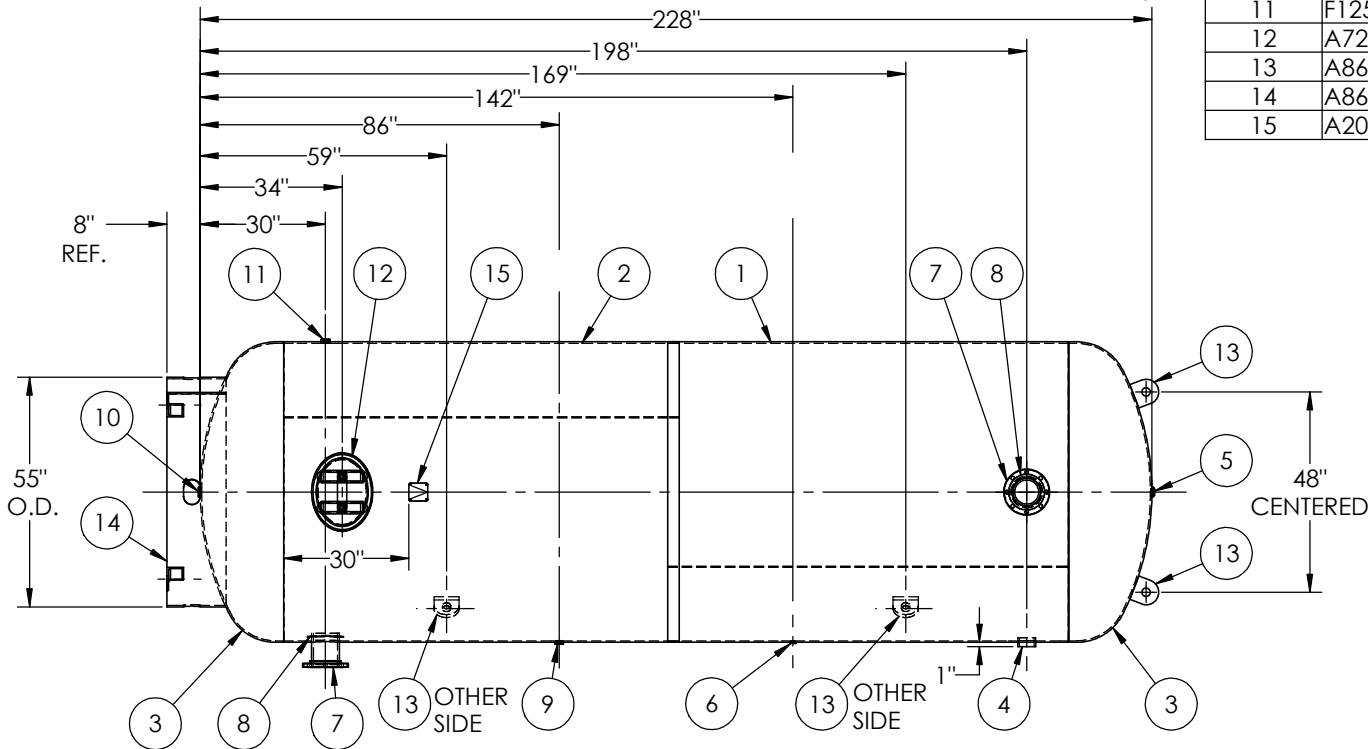


ITEM NO.	PART NO.	DESCRIPTION	QTY.
1	302457-SL1	SHELL LAYOUT FOR 72" TANK	1
2	302457-SL2	SHELL LAYOUT FOR 72" TANK	1
3	H44804	.340 MIN. 72" O.D. 2:1 ELLIP. BEV. HEAD	2
4	F10400	3"-NPT HALF COUPLING	1
5	F10370	1"-NPT FLAT FLANGE	1
6	F31826	1/4"-NPT FLAT FLANGE	1
7	A99220	6NPS RFSO ASY.	2
8	A84390.72	6" PIPE BACKING RING	2
9	F30263	1"-NPT RADIAL FLANGE	1
10	F10360	1 1/4"-NPT FLAT FLANGE	1
11	F12520	1 1/4"-NPT RADIAL FLANGE	1
12	A72305	12" X 16" X 3/4" X 4" 300# MANWAY	1
13	A86004	1" LIFT LUG STD VER	4
14	A86003	BASERING ASSEMBLY	1
15	A20910	ASME DATA PLATE	1



NOTES:

- BREAK ALL EXPOSED INTERIOR NOZZLE EDGES.
- ALL FLANGE BOLT HOLES TO STRADDLE VESSEL CENTERLINES.

SPECIFICATIONS

O.D. 72 LGTH. 228
 WT. 6661 LBS.
 S.A. 301.59 SQ.FT.
 GAL. 3800 CU.FT. 499 CRN: T1800.2456
 CODE: ASME Section VIII, Div.1, LATEST EDITION
 STD. TOLERANCES: M-2461 (UNLESS OTHERWISE NOTED)

MAWP 165 PSI @ 400°F
 W
 EXMT UG20(f) CORR ALW 0 SH 0 HD
 WELD DETAILS: M-1932



VERTICAL AIR RECEIVER

RELEASED FOR PRODUCTION
 Q.C. _____ DATE _____

REVISONS		DATE	APP.
REV.	BY	DESCRIPTION	
A	BAK		AMA
B	DP		DP
C	UG		MK

DRAWN BY: BS	DATE:
APPR. BY: JR	DATE:
SCALE: NONE	DRWG NO. 302457

