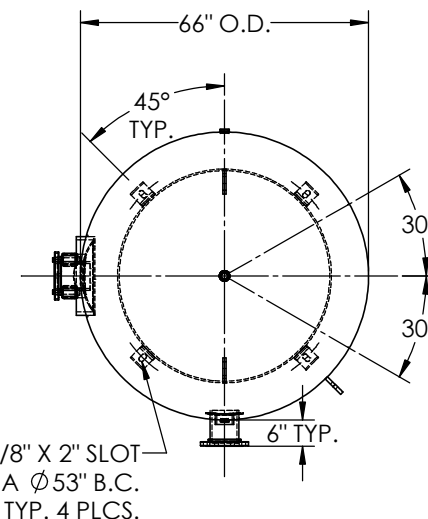
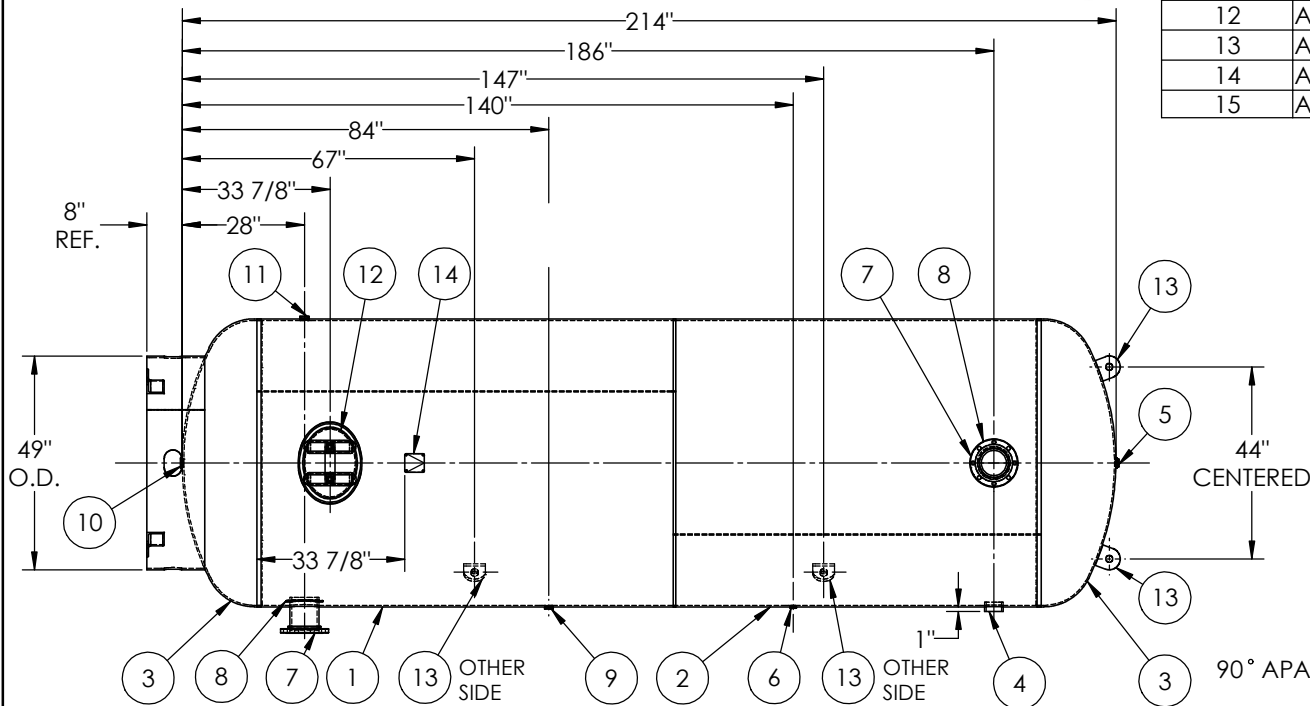


ITEM NO.	PART NO.	DESCRIPTION	QTY.
1	A302455-SL1	SHELL LAYOUT FOR 66" TANK	1
2	A302455-SL2	SHELL LAYOUT FOR 66" TANK	1
3	H44802	.340 MIN. 66" O.D. 2:1 ELLIP. BEV. HEAD	2
4	F10400	3"-NPT HALF COUPLING	1
5	F10370	1"-NPT FLAT FLANGE	1
6	F31826	1/4"-NPT FLAT FLANGE	1
7	A99220	6NPS RFSO ASY.	2
8	A84390.60	6" PIPE BACKING RING	2
9	F30263	1"-NPT RADIAL FLANGE	1
10	F10360	1 1/4"-NPT FLAT FLANGE	1
11	F12520	1 1/4"-NPT RADIAL FLANGE	1
12	A72305	12" X 16" X 3/4" X 4" 300# MANWAY	1
13	A84524	STANDARD 3/4" X 5" X 5" LIFT LUG	4
14	A20910	ASME DATA PLATE	1
15	A84526	BASERING ASSEMBLY	1



NOTES:  
1. BREAK ALL EXPOSED INTERIOR NOZZLE EDGES.  
2. ALL FLANGE BOLT HOLES TO STRADDLE VESSEL CENTERLINES.

SPECIFICATIONS	
O.D. 66 LGTH. 214	MAWP 165 PSI @ 400°F
WT. 5723 LBS.	
S.A. 326.60SQ.FT.	
GAL. 3000 CU.FT. 393.35 CRN: N/A	
CODE: ASME Section VIII, Div.1, LATEST EDITION	W
STD. TOLERANCES: M-2461 (UNLESS OTHERWISE NOTED)	EXMT UG20(f) CORR ALW 0 SH 0 HD
	WELD DETAILS: M-1932



**VERTICAL AIR RECEIVER**

REVISIONS			
REV.	BY	DESCRIPTION	DATE
B	JC		
C	BAK		
D	BS		
E	RK		

DRAWN BY: BS	DATE:
APPR. BY: JR	DATE:
SCALE: NONE	DRWG NO. 302455

RELEASED FOR PRODUCTION  
Q.C. \_\_\_\_\_ DATE \_\_\_\_\_

