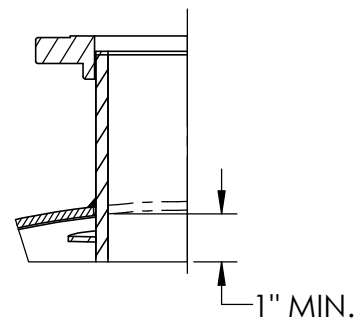
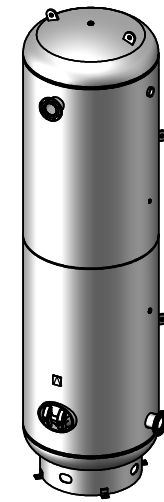


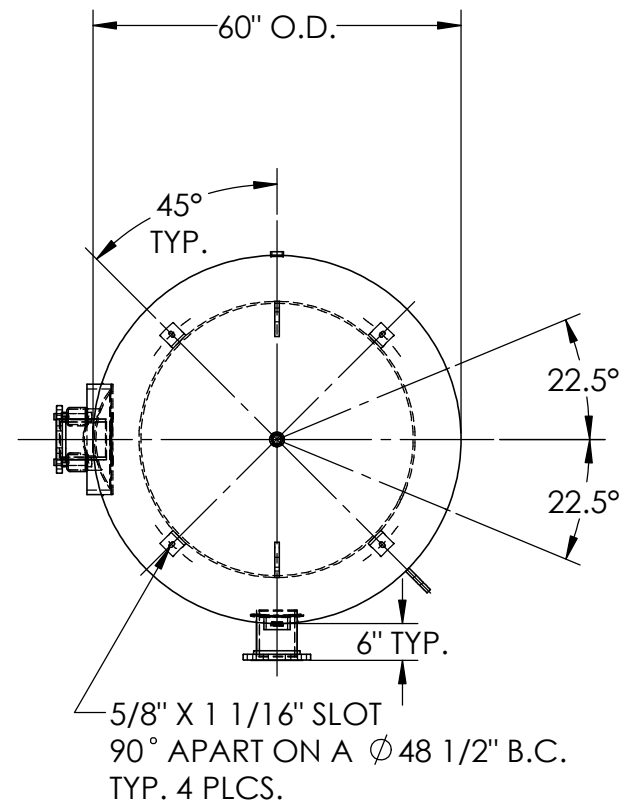
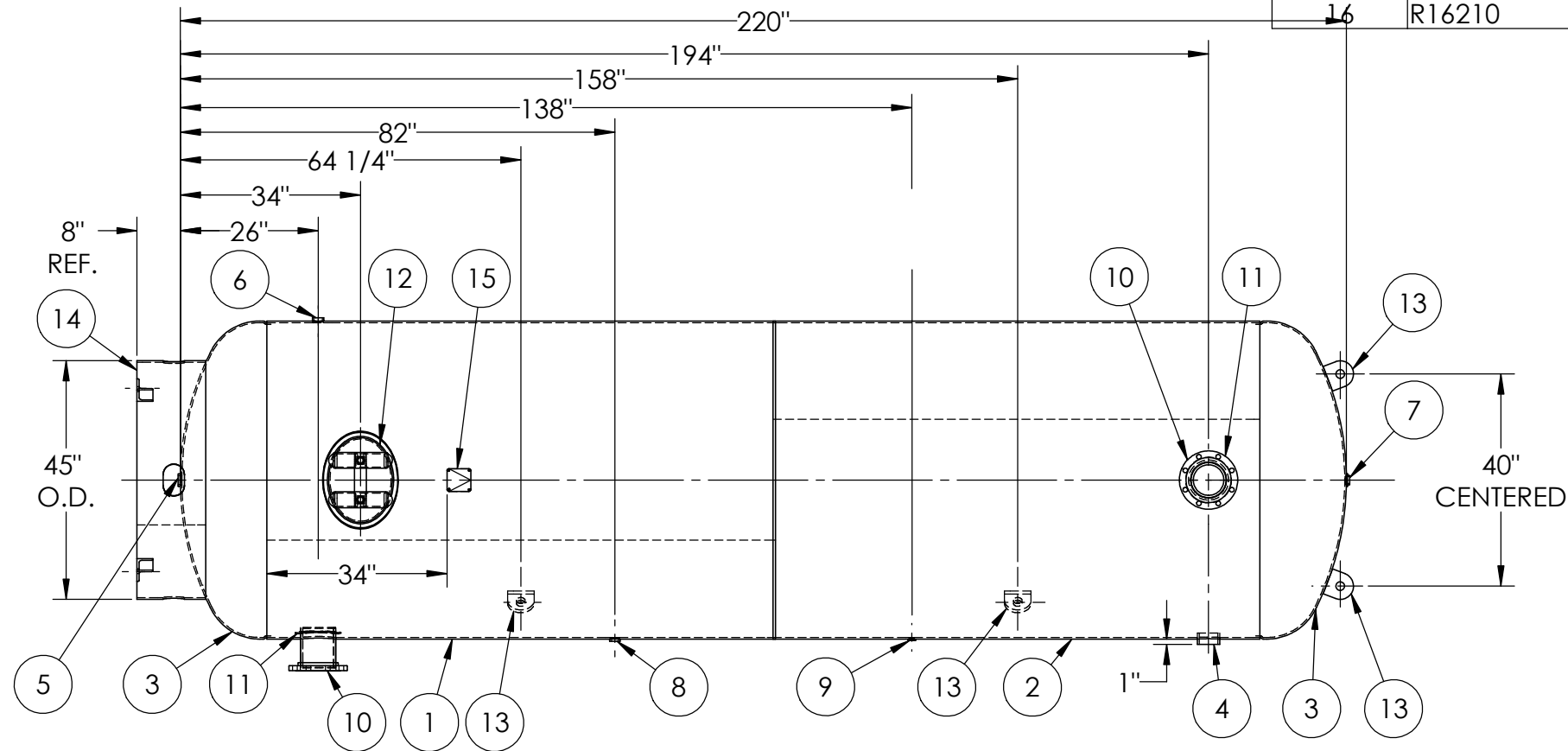
MANWAY DETAIL



6" NOZZLE DETAIL



ITEM NO.	PART NO.	DESCRIPTION	QTY.
1	A302452-SL1	SHELL LAYOUT FOR 60" TANK	1
2	A32452-SL2	SHELL LAYOUT FOR 60" TANK	1
3	H44794	.284 MIN. 60" O.D. 2:1 ELLIP. JOG. HEAD	2
4	F10400	3"-NPT HALF COUPLING	1
5	F10360	1 1/4"-NPT FLAT FLANGE	1
6	F12520	1 1/4"-NPT RADIAL FLANGE	1
7	F10370	1"-NPT FLAT FLANGE	1
8	F30263	1"-NPT RADIAL FLANGE	1
9	F31826	1/4"-NPT FLAT FLANGE	1
10	A99220	6NPS RFSO ASY.	2
11	A84390.60	6" PIPE BACKING RING	2
12	A72305	12" X 16" X 3/4" X 4" 300# MANWAY	1
13	A84524	3/4" LIFT LUG STD VER	4
14	A85012	STD SKIRT & CLIP ASSY. FOR 60" DIA.	1
15	A20910	ASME DATA PLATE	1
16	R16210	6" S/80 PIPE X 7-1/2" LONG	2



NOTES:

RELEASED FOR PRODUCTION
Q.C. _____ DATE _____



SPECIFICATIONS

O.D. 60 LGTH. 220
 WT. 4437 LBS.
 S.A. 303.21 SQ.FT.
 GAL. 2560 CU.FT. 336.86 CRN: V9750.2C
 CODE: ASME Section VIII, Div.1, LATEST EDITION
 STD. TOLERANCES: M-2461 (UNLESS OTHERWISE NOTED)

MAWP 165 PSI @ 400°F

EXMT UG20(f) CORR ALW 0 SH 0 HD
 WELD DETAILS: M-1932



VERTICAL AIR RECEIVER

REVISIONS				
REV.	BY	DESCRIPTION	DATE	APP.
3	BAK			JC
4	GJ			GJ
A	HD			HD
B	RK			MK
C	RK			MK

DRAWN BY:	BS	DATE:	
APPR. BY:	JR	DATE:	
SCALE:	NONE	DRWG NO.	302452