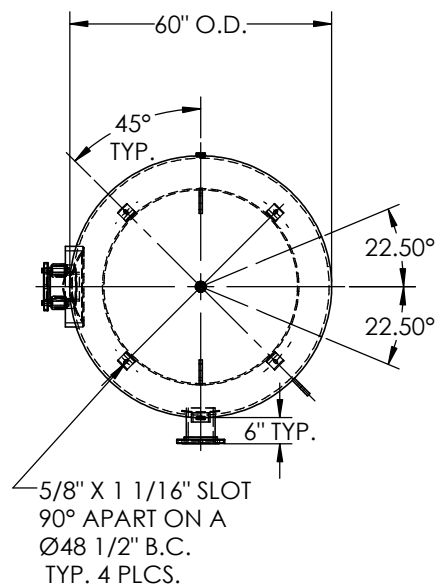
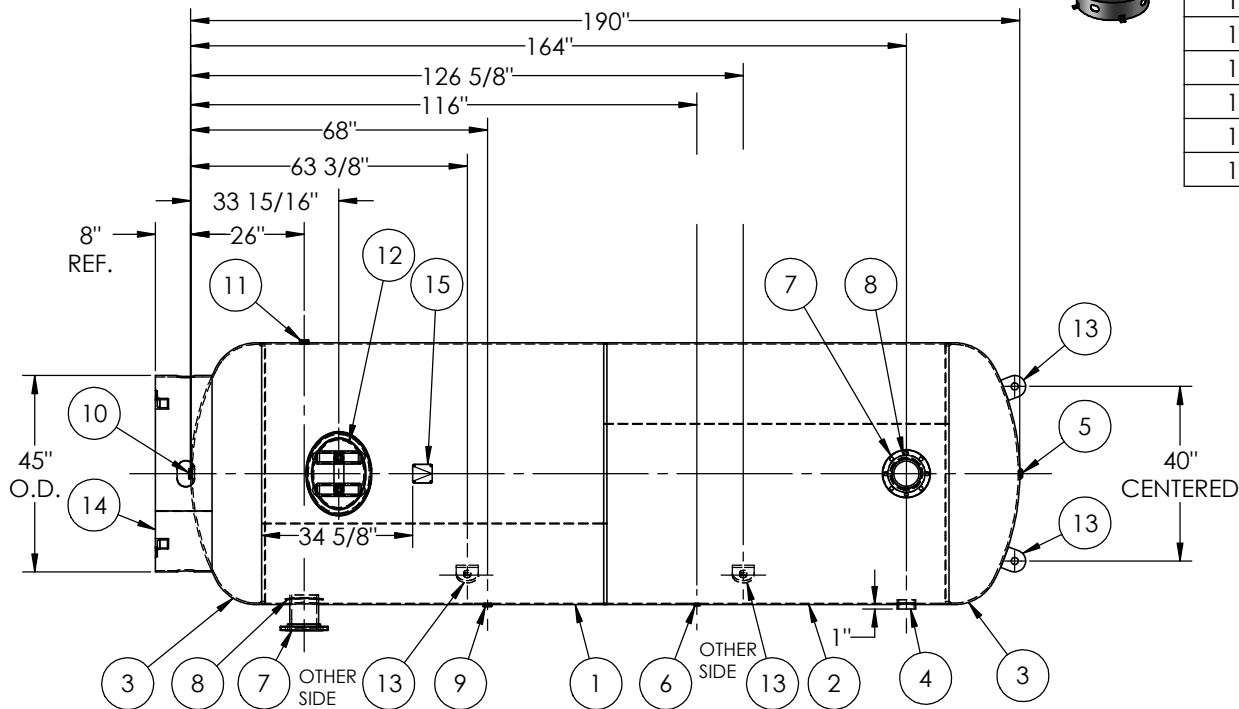


ITEM NO.	PART NO.	DESCRIPTION	QTY.
1	302450-SL1	SHELL LAYOUT FOR 60" TANK	1
2	302450-SL2	SHELL LAYOUT FOR 60" TANK	1
3	H44796	.340 MIN. 60" O.D. 2:1 ELLIP. JOG. HEAD	2
4	F10400	3"-NPT HALF COUPLING	1
5	F10370	1"-NPT FLAT FLANGE	1
6	F31826	1/4"-NPT FLAT FLANGE	1
7	A99220	6NPS RFSO ASY.	2
8	A84390.60	6" PIPE BACKING RING	2
9	F30263	1"-NPT RADIAL FLANGE	1
10	F10360	1 1/4"-NPT FLAT FLANGE	1
11	F12520	1 1/4"-NPT RADIAL FLANGE	1
12	A95073	12" X 16" X 1" X 4" 300# MANWAY	1
13	A84524	3/4" LIFT LUG STD VER	4
14	A85012	STD SKIRT & CLIP ASSY. FOR 60" DIA.	1
15	A20910	ASME DATA PLATE	1



NOTES:

- MIN. SHELL THICKNESS REQUIRED FOR MANWAY.

SPECIFICATIONS

O.D. 60 LGTH. 190 MAWP 200 PSI @ 400°F
 WT. 4097 LBS.
 S.A. 264 SQ.FT.
 GAL. 2200 CU.FT.294.1 CRN: V9506.2
 CODE: ASME Section VIII, Div.1, LATEST EDITION EXMT UG20(f) CORR ALW 0 SH 0 HD
 STD. TOLERANCES: M-2461 (UNLESS OTHERWISE NOTED) WELD DETAILS: M-1932



VERTICAL AIR RECEIVER

REVISIONS		DATE	APP.
REV.	BY	DESCRIPTION	
3	JC		JC
4	EK		JC
B	HD		DS
C	HD		HD
D	UG		MK

DRAWN BY:	CH	DATE:	
APPR. BY:	JR	DATE:	
SCALE:	NONE	DRWG NO.	302450

RELEASED FOR PRODUCTION
 Q.C. _____ DATE _____

