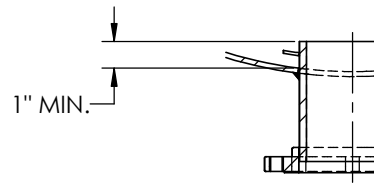
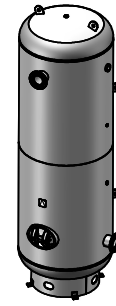


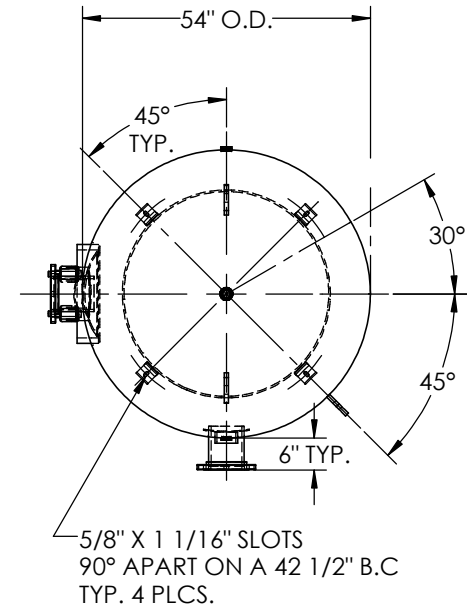
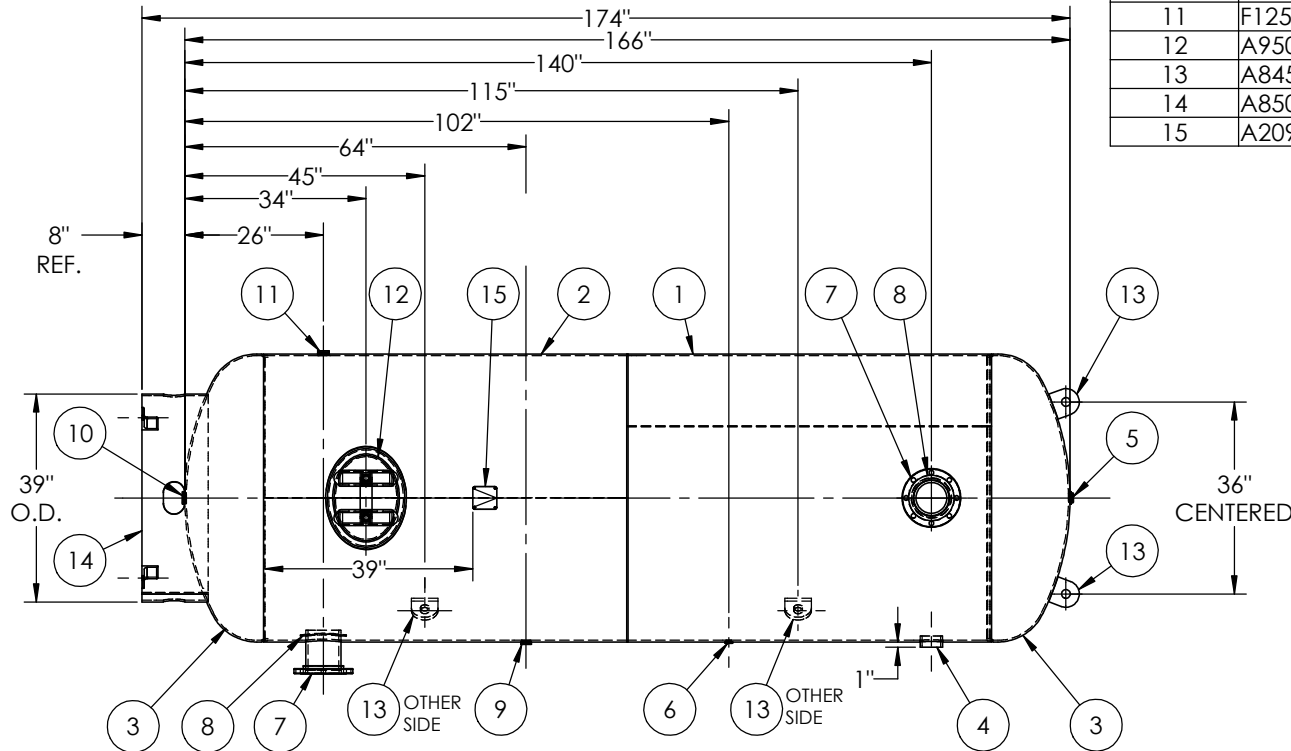
MANWAY DETAIL



6" NOZZLE DETAIL



ITEM NO.	PART NO.	DESCRIPTION	QTY.
1	A302446-SL1	SHELL LAYOUT FOR 54" TANK	1
2	A302446-SL2	SHELL LAYOUT FOR 54" TANK	1
3	H44790	.284 MIN. 54" O.D. 2:1 ELLIP. JOG. HEAD	2
4	F10400	3"-NPT HALF COUPLING	1
5	F10370	1"-NPT FLAT FLANGE	1
6	F31826	1/4"-NPT FLAT FLANGE	1
7	A99220	6NPS RFSO ASY.	2
8	A84390.54	6" PIPE BACKING RING	2
9	F30263	1"-NPT RADIAL FLANGE	1
10	F10360	1 1/4"-NPT FLAT FLANGE	1
11	F12520	1 1/4"-NPT RADIAL FLANGE	1
12	A95073	12" X 16" X 1" X 4" 300# MANWAY	1
13	A84524	STANDARD 3/4" X 5" X 5" LIFT LUG	4
14	A85008	BASERING ASSEMBLY	1
15	A20910	ASME DATA PLATE	1



NOTES:

RELEASED FOR PRODUCTION
Q.C. _____ DATE _____

SPECIFICATIONS

O.D. 54 LGTH. 166
WT. 3229 LBS.
S.A. 207.90 SQ.FT.
GAL. 1550 CU.FT.204.74 CRN: AA0634.2C
CODE: ASME Section VIII, Div.1, LATEST EDITION
STD. TOLERANCES: M-2461 (UNLESS OTHERWISE NOTED)

MAWP 165 PSI @ 400°F

EXMT UG20(f) CORR ALW 0 SH 0 HD
WELD DETAILS: M-1932



VERTICAL AIR RECEIVER

REVISONS		DATE	APP.
REV.	BY	DESCRIPTION	
C	HD		DP
D	HD		DS
E	LG		DS
F	DS		DS
G	UG		MK

DRAWN BY:	BS	DATE:	
APPR. BY:	JR	DATE:	
SCALE:	NONE	DRWG NO.	302446