



PROUDLY MANUFACTURED
IN THE USA



Underground Propane Tanks

superior quality

unbeatable durability

on-hand inventory



120-1000 GALLONS

PRESSURE VESSEL CODES & REGISTRATION

- Compliant with ASME/NBIC inspection standards
- Complies with NFPA 58
- Meets the specifications established by the Railroad Commission of Texas

PAINT SPECIFICATIONS

- Epoxy powder paint for maximum rust protection
- Tanks painted gray
- Ready to bury durable epoxy powder coating†

SHROUD FEATURES (500 & 1,000 gallon)

- Durable construction
- Large opening for easy filling and maintenance
- Recessed markers to indicate proper burial depth
- Permanent hole for mounting location flag
- Access on sides for flexible riser connection

VESSEL FEATURES

- Tanks fitted with Cavagna, Rotarex or RegO valves and Rochester or Rotarex liquid level gauges
- Container pressure rated at 250 PSI @ 400°F
- Vacuum purged
- Duplicate data plate is zip tied on the riser pipe below the anode bolt connection for convenience
- Product is offered with short or tall risers
- Anode bolt connection located under the dome
- Short or tall plastic shroud assemblies (w/lid) supplied accordingly

PROCESS CONTROL

All welded products are x-rayed and pressure tested @ 325 PSI per ASME Sec VIII, Div 1 requirements, followed by rigorous leak test inspections, both pre and post valving.

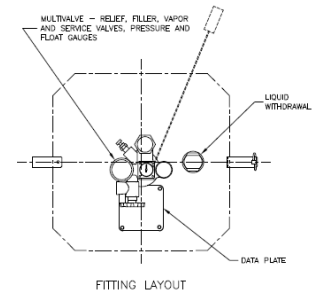
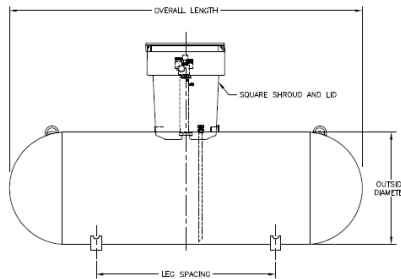
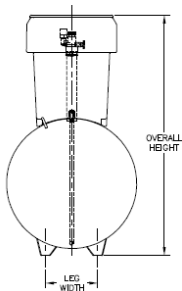
UNDERGROUND PROPANE TANKS

Rev. 1/17/2025

Part Number	Water Capacity Gal/l	Outside Diameter In/mm	Head Type	Overall Length In/mm	Overall Riser Height In/mm		Leg Width In/mm	Leg Spacing In/mm	Weight Lbs/kg	Quantity	
					Long Riser	Short Riser				Full Load	Per Stack
68289	120 454.2	24" 609.6	Ellip	5' 8" 1727.2	4' 7 13/16" 1417.6	– –	10 1/8" 257.2	3' 0" 914.4	316 143.3	63	9
68269	120 454.2	24" 609.6	Ellip	5' 8" 1727.2	– –	3' 9 1/4" 1149.4	10 1/8" 257.2	3' 0" 914.4	308 139.7	72	9
68288	250 946.3	30" 762	Hemi	7' 10" 2387.6	5' 1 9/16" 1563.7	– –	12 3/4" 323.9	3' 6" 1066.8	471 213.6	42	7
68271	250 946.3	30" 762	Hemi	7' 10" 2387.6	– –	4' 3" 1295.4	12 3/4" 323.9	3' 6" 1066.8	463 210	42	7
68273	320 1211.3	30" 762	Hemi	9' 7" 2921	5' 1 9/16" 1563.7	– –	12 3/4" 323.9	4' 1/4" 1225.6	576 261.3	35	7
68285	320 1211.3	30" 762	Hemi	9' 7" 2921	– –	4' 3" 1295.4	12 3/4" 323.9	4' 1/4" 1225.6	568 257.6	35	7
68275.20	500 1892.7	41" 1041.4	Hemi	8' 8 1/2" 2654.3	6' 13/16" 1849.4	– –	16 1/4" 412.8	3' 8" 1117.6	986 447.2	24	4
68286.20	500 1892.7	41" 1041.4	Hemi	8' 8 1/2" 2654.3	– –	5' 1/16" 1525.6	16 1/4" 412.8	3' 8" 1117.6	978 443.6	24	4
68277.20	1000 3875.4	41" 1041.4	Hemi	15' 8 1/2" 4787.9	6' 13/16" 1849.4	– –	16 1/4" 412.8	9' 0" 2743.2	1773 804.2	12	4
68287.20	1000 3875.4	41" 1041.4	Hemi	15' 8 1/2" 4787.9	– –	5' 0" 1525.6	16 1/4" 412.8	9' 0" 2743.2	1765 800.6	12	4

† Federal, state, and local regulations may specify requirements for protective coatings and cathodic protection. The purchaser and installer are responsible for compliance with all relevant regulations, including proper purging before use. Continuous coatings are required and must adhere to applicable codes.

All Vessel Dimensions are Approximate



*Quality tanks
made safely
by good people
since 1946.*

Contact us for more information: sales@mantank.com • P: 256-495-8492 • manchestertank.com