

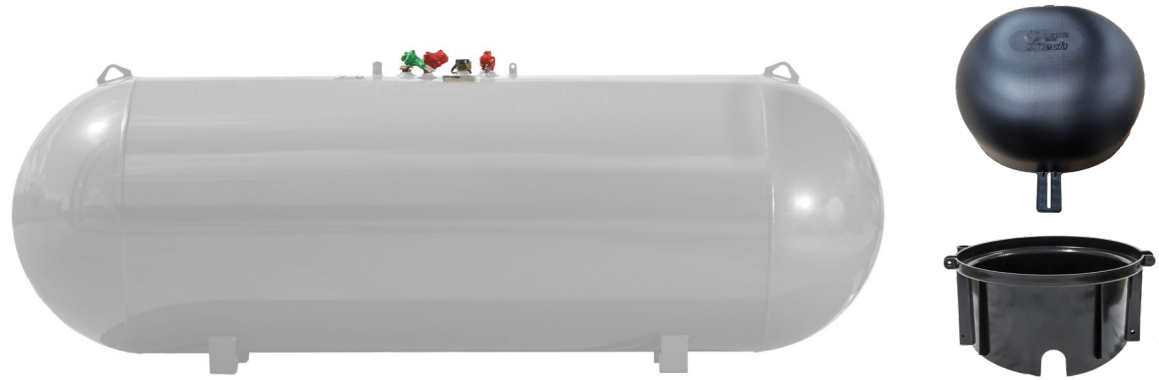


PROUDLY MANUFACTURED
IN THE USA



AG/UG Propane Tanks

*superior quality
unbeatable durability
on-hand inventory*



120-1000 GALLONS

PRESSURE VESSEL CODES & REGISTRATION

- Compliant with ASME/NBIC inspection standards
- Complies with NFPA 58
- Meets the specifications established by the Railroad Commission of Texas

PAINT SPECIFICATIONS

At the time of order, customers must specify the intended application to determine the paint used during manufacturing.

- **Aboveground Tanks:** Painted Sky White with durable polyester TGIC powder paint for maximum rust protection. Additional colors available. If intended for underground use, the tank must be field-painted.
- **Underground Tanks:** Zinc epoxy primer base coat applied, then finished with gray TGIC powder coat.

VESSEL FEATURES

- Tanks fitted with Cavagna, Rotarex or RegO valves and Rochester or Rotarex liquid level gauges
- Dual service options for aboveground or underground applications
- Product supplied with steel dome (custom colors available upon request) or plastic AG/UG shroud, specify at time of order
- Container pressure rated at 250 PSI @ 400°F
- Vacuum purged
- Stainless steel data plate
- Product supplied plastic dome or AG/UG shroud, specify at time of order

PROCESS CONTROL

All welded products are x-rayed and pressure tested @ 325 PSI per ASME Sec VIII, Div 1 requirements, followed by rigorous leak test inspections, both pre and post valving.

AG/UG PROPANE TANKS

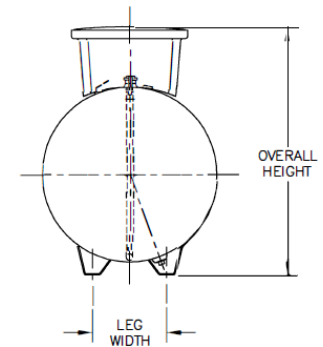
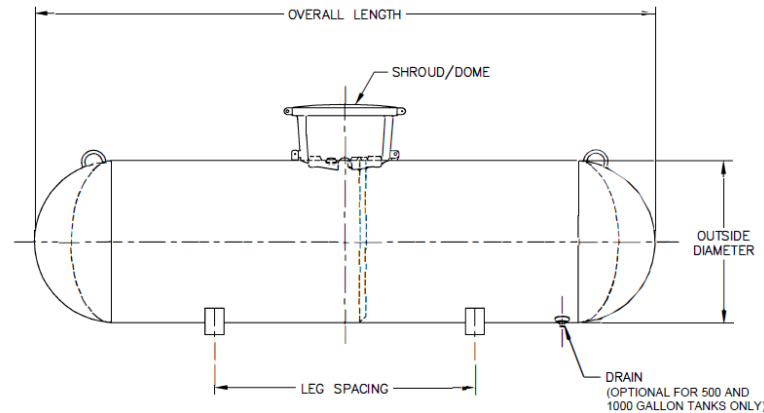
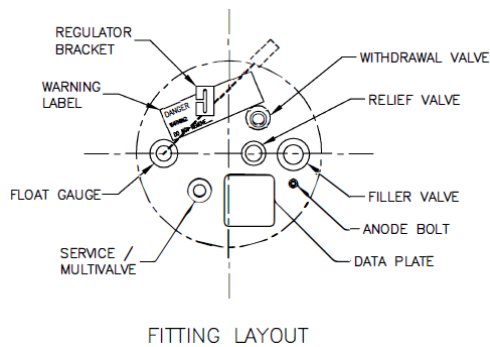
Rev. 4/11/2025

Part Number	Water Capacity Gal/l	Outside Diameter In/mm	Head Type	Overall Length In/mm	Overall Height In/mm	Leg Width In/mm	Leg Spacing In/mm	Weight Lbs/kg	Quantity	
									Full Load	Per Stack
68280.6	120 454.2	24" 609.6	Ellip	5' 8" 1727.2	3' 1 3/16" 944.5	10 1/8" 257.2	3' 0" 914.4	302 137	96	12
68281.6	250 946.3	30" 762	Hemi	7' 10" 2387.6	3' 6 15/16" 1090.6	12 3/4" 323.9	3' 6 " 1066.8	457 207.3	54	9
68282.6	320 1211.3	30" 762	Hemi	9' 7" 2921	3' 6 15/16" 1090.6	12 3/4" 323.9	4' 1/4" 1225.6	563 255.4	45	9
68283.26*	500 1892.7	41" 1041.4	Hemi	8' 8 1/2" 2654.3	4' 4" 1320.8	16 1/4" 412.8	3' 8" 1117.6	972 440.9	30	5
68284.26*	1000 3875.4	41" 1041.4	Hemi	15' 8 1/2" 4787.9	4' 5 3/4" 1365.3	16 1/4" 412.8	9' 0" 2743.2	1751 794.3	15	5

* No Drain

All Vessel Dimensions are Approximate

Federal, state, and local regulations may specify requirements for protective coatings and cathodic protection. The purchaser and installer are responsible for compliance with all relevant regulations, including proper purging before use. Continuous coatings are required and must adhere to applicable codes.



*Quality tanks
made safely
by good people
since 1946.*

Contact us for more information: sales@mantank.com • P: 256-495-8492 • manchestertank.com