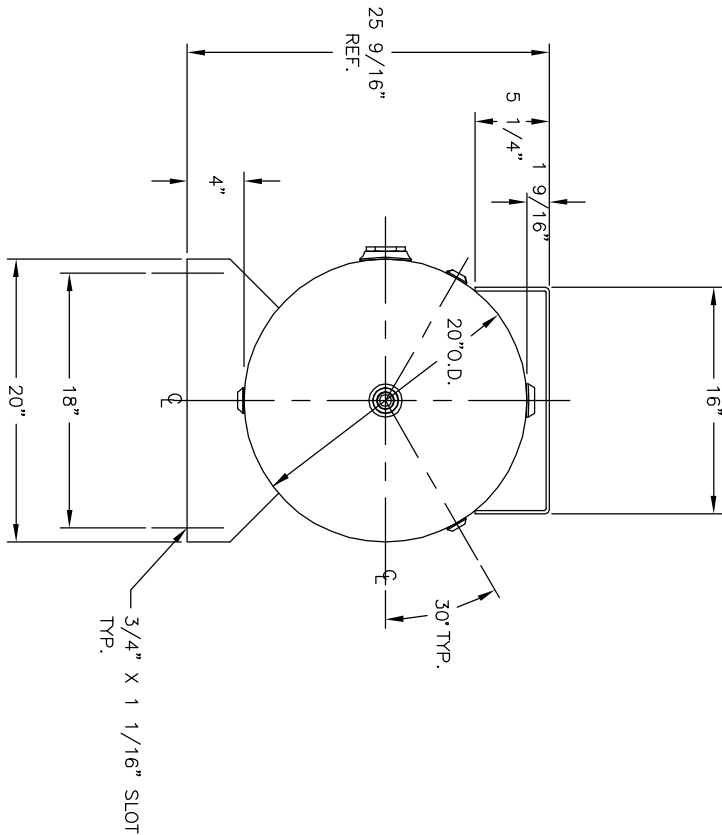
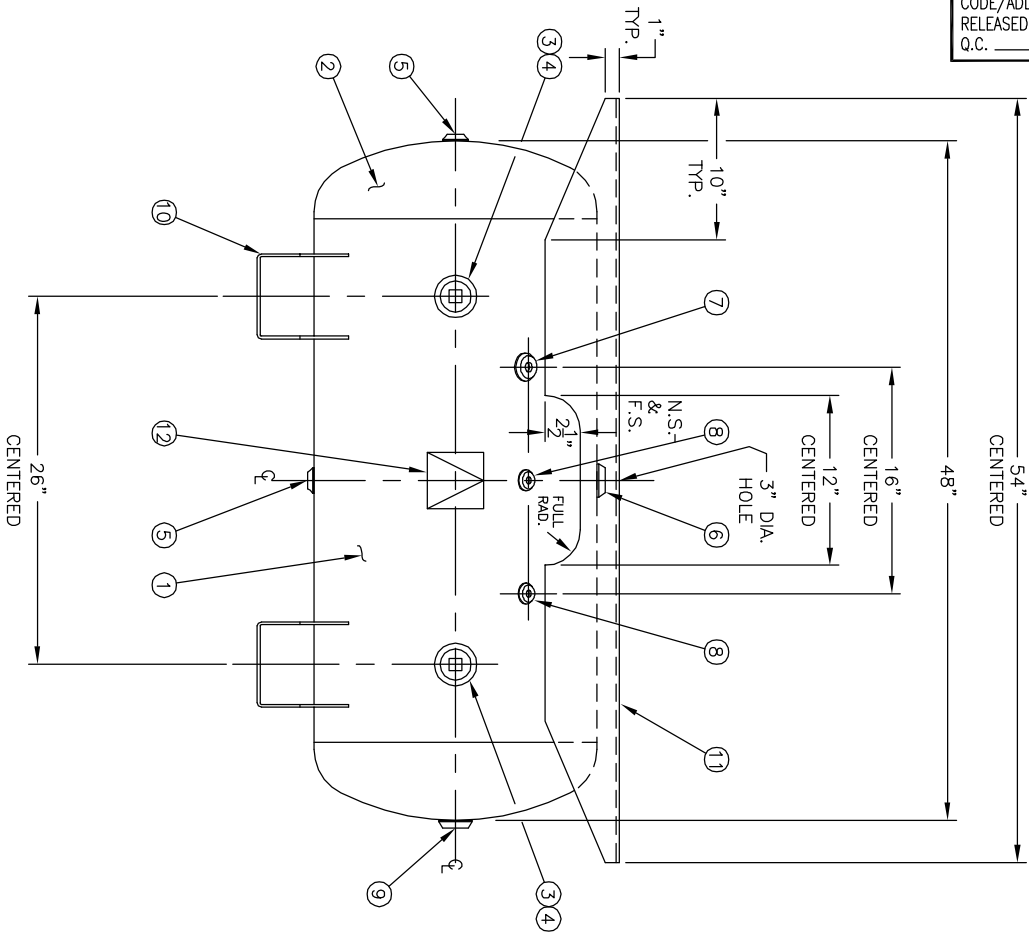


CODE/ADDENDA 2010/2011A APPROVED  
 RELEASED FOR PRODUCTION  
 Q.C. \_\_\_\_\_ DATE \_\_\_\_\_



NO.	QTY.	DESCRIPTION	SPEC	SUB-DWG.
1	1			
2	2	2\"-NPT 1500# RADIAL FLANGE	SA-181-70	
3	2	2\"-NPS PLUG	SA-181-70	
4	2	1/2\"-NPT 1500# FLAT FLANGE	SA-181-70	
5	2	1\"-NPT 1500# RADIAL FLANGE	SA-181-70	
6	1	3/8\"-NPT 1500# FLAT FLANGE	SA-181-70	
7	1	1/4\"-NPT 1500# FLAT FLANGE	SA-181-70	
8	1	1\"-NPT 1500# FLAT FLANGE	SA-181-70	
9	1	STANDARD SADDLE FOR 20\" DIA. TANK		AB4492
10	1	1/4\" X 25 1/2\" X 54\" PLATFORM	C1008	
11	1	ASME DATA PLATE	C1010	
12	1			

**SPECIFICATIONS**

O.D. 20 LGTH. 48 SH.  
 MAMP 200 PSI @ 650 F. HD.  
 RT- MDMT -20 F @ 200 PSI GAL 60 S.A. 7.9  
 EXMT TEST PSI WT. 240 QULT. 22.6  
 CRN F0516.1C COOR ALW SH HD  
 WELD DETAILS: M-1932 CODE: ASME SEC.VIII DIV. 1  
 STD. TOLERANCES (UNLESS OTHERWISE NOTED): M-2461 LATEST EDITION & ADDENDA



Q.: 3000

60 GALLON  
 STD. HORIZ. W/EXTENDED PLATFORM

DRAWN BY: 8. J. [Signature]  
 DATE: \_\_\_\_\_  
 SCALE: NONE  
 DRAWING NO.: 302693

**REVISION**

SYMBOL	DATE	BY
A	3/3	3/3

**NOTES**

APP	DATE
3/3	3/3