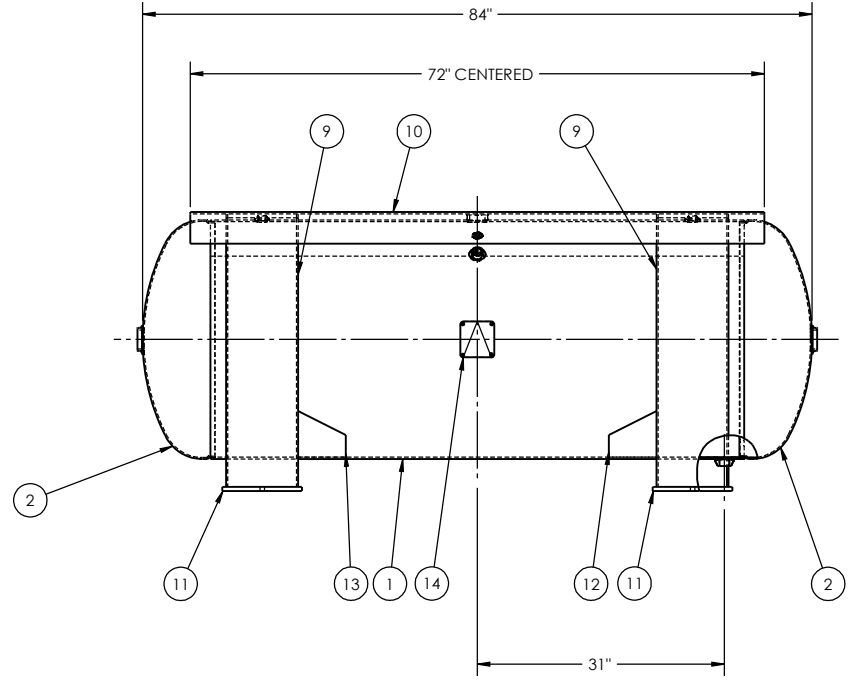
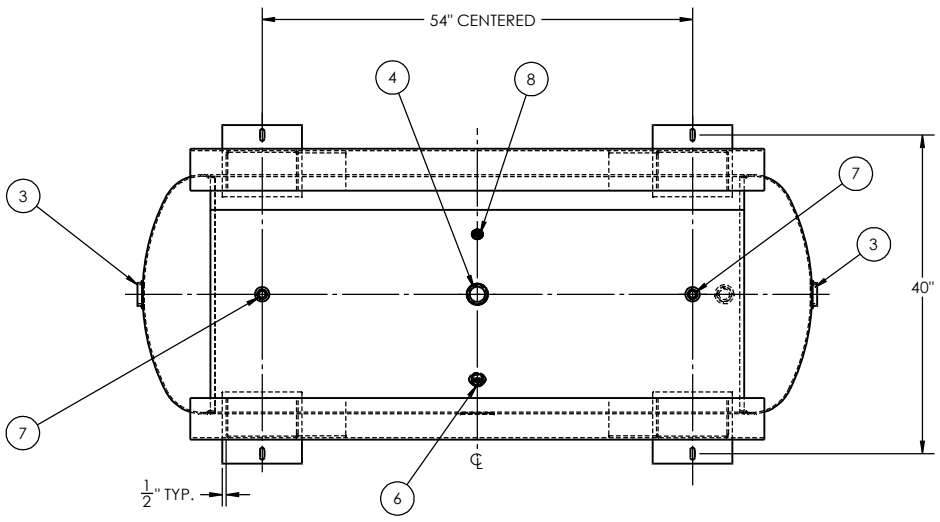
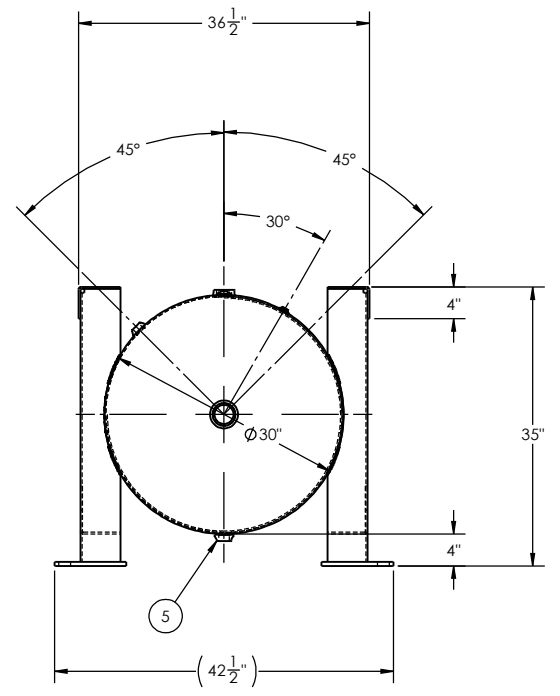


CODE/ADDENDA APPROVED  
 RELEASED FOR PRODUCTION  
 Q.C. DATE



ITEM NO.	QTY.	DESCRIPTION	Material	PART NUMBER
1	1	SHELL LAYOUT FOR 30" TANK	SA-414-G	302652-SL
2	2	.186 MIN. 30" O.D. 2:1 ELLIP. JOG. HEAD	SA-414-G	H32041
3	2	2"-NPT 1500# FLAT FLANGE	SA-181-70	F10440
4	1	1 1/2"-NPT 1500# RADIAL FLANGE	SA-181-70	F30317
5	1	1"-NPT 1500# RADIAL FLANGE	SA-181-70	F32270
6	1	3/4"-NPT 1500# RADIAL FLANGE	SA-181-70	F32275
7	2	1/2"-NPT 1500# FLAT FLANGE	SA-181-70	F32268
8	1	1/8"-NPT 1500# FLAT FLANGE	SA-181-70	F32308
9	4	FORMED LEG	C1010	A94481
10	2	1/4" FORMED RAIL	C1008	A94482
11	4	1/2" FOOT PLATE	C1008	A94480
12	2	1/4" LIFTING ANGLE	C1008	A94483
13	2	1/4" LIFTING ANGLE	C1008	A94483
14	1	ASME DATA PLATE	C1010	A20910

△



NOTES

SPECIFICATIONS

O.D. 30 LGTH. 84  
 MAWP 200 PSI @ 650 °F  
 GAL. 240  
 WT. 818.7#  
 CORR ALW 0 SH. 0 HD.  
 CODE: ASME Section VIII, Div.1  
 LATEST EDITION & ADDENDA  
 CRN F0628.1C  
 WELD DETAILS: M-1932  
 STD. TOLERANCES (UNLESS OTHERWISE NOTED): M-2461



GRASSHOPPER TANK

REV.	BY	DESCRIPTION	DATE	APPROVED
A	JR	REDRAWN IN SOLIDWORKS	7/14/2009	JR

DRAWN BY	DATE	SCALE: NONE
APP. BY	DATE	DRAWING NO. 302652