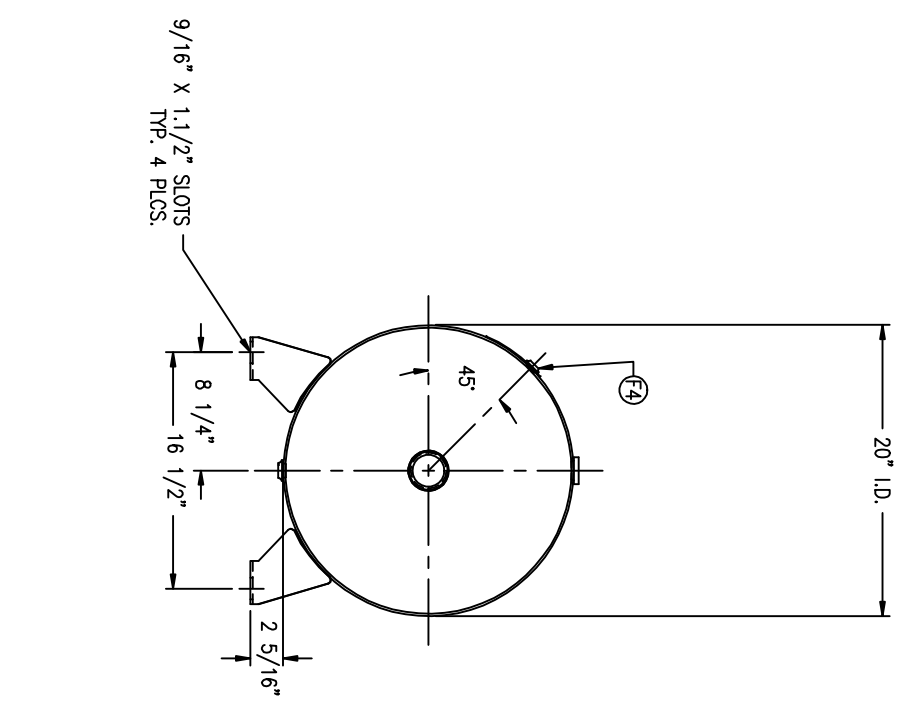
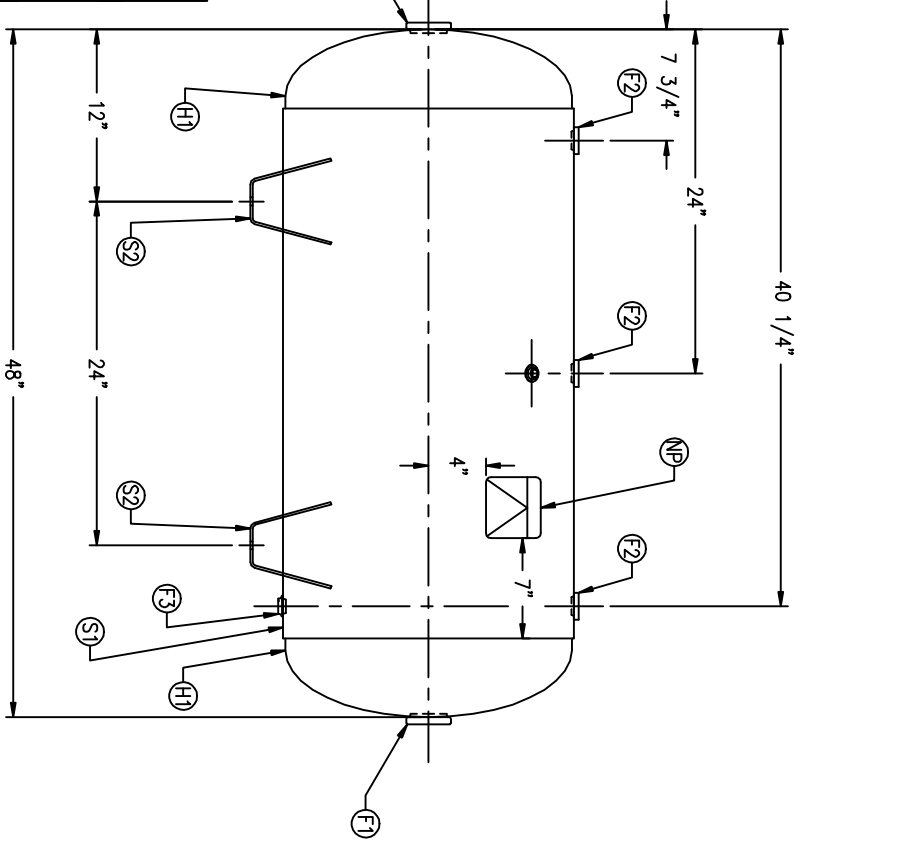


CODE/ADDENDA 2004/2006 APPROVED KM
 RELEASED FOR PRODUCTION
 Q.C. _____ DATE _____

| FIND NO. | NPT SIZE |
|----------|----------|
| F1 | 2 |
| F2 | 3/4 |
| F3 | 1/2 |
| F4 | 1/4 |



| SYMBOL | DATE | BY | REVISION | APP | XREF | REV | NOTES |
|--------|------|----|----------|-----|------|-----|-------|
| | | | | | | | |

SPECIFICATIONS

I.D. 20 LGTH. 48
 MAMP 200 PSI @ 650 °F
 CRN E7399.2C
 W

GAL. 60 S.A. 22.6
 WT. 163# CULFT. 8.0

CODE: ASME SEC. VIII DIV. I,
 LATEST EDITION & ADDENDA

WELD DETAILS: M-1932
 STD. TOLERANCES (UNLESS OTHERWISE NOTED): M-2461

SCALE: NONE
 DRAWING NO. 302473

MANCHESTER TANK
 H.A. 3000A
 DRAWN BY _____ DATE _____
 APP. BY _____ DATE _____

HORIZONTAL AIR RECEIVER