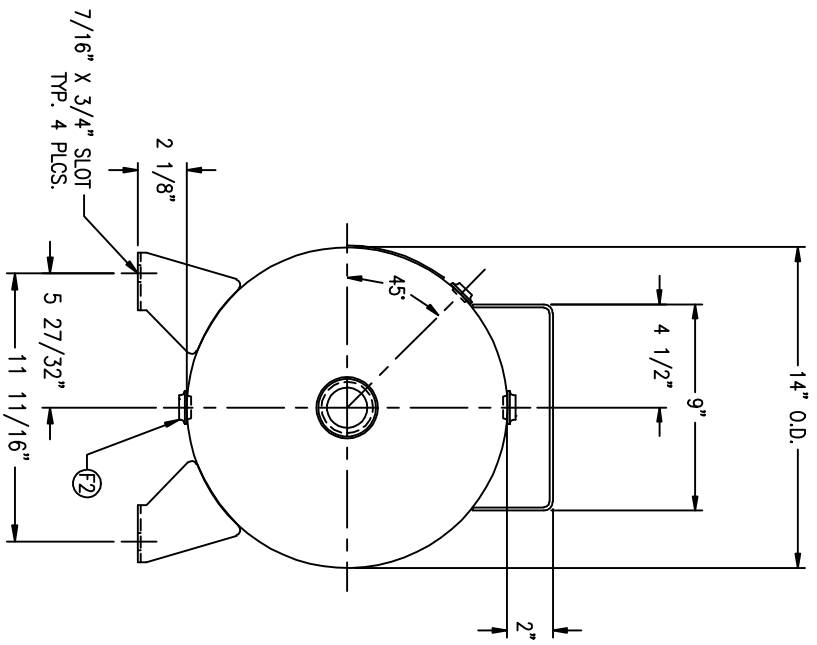
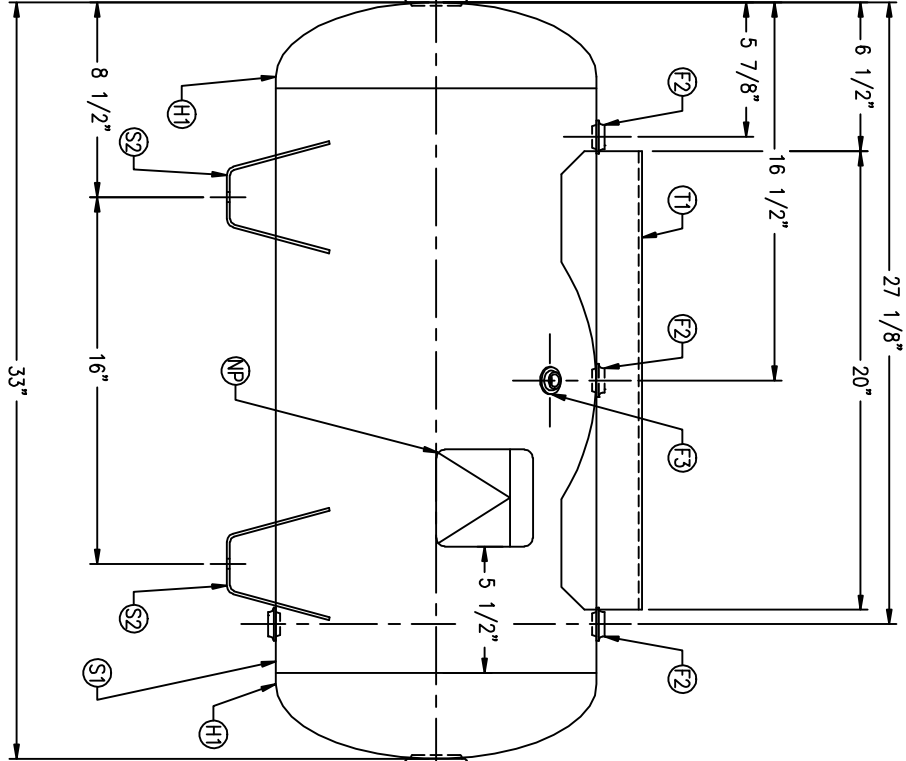


CODE/ADDENDA 2004/2006 APPROVED KM
 RELEASED FOR PRODUCTION
 Q.C. _____ DATE _____

| FIND NO. | NPT SIZE |
|----------|----------|
| F1 | 1 1/2 |
| F2 | 1/2 |
| F3 | 1/4 |



| SYMBOL | DATE | BY | REVISION | APP | XREF | REV | NOTES |
|--------|------|----|----------|-----|------|-----|-------|
| | | | | | | | |

SPECIFICATIONS

O.D. 14 LGTH. 33
 MAMP 200 PSI @ 650 °F

GAL. 20 S.A. 10.7
 WT. 79# CULFT. 2.6

CRN H5605.5123467890
 W
 WELD DETAILS: M-1932
 STD. TOLERANCES (UNLESS OTHERWISE NOTED): M-2461

CODE: ASME SEC. VIII DIV. 1,
 LATEST EDITION & ADDENDA



\\CORP2\DWG.302

HORIZONTAL AIR RECEIVER

| | | |
|----------|------|--------------------|
| DRAWN BY | DATE | SCALE: NONE |
| APP. BY | DATE | DRAWING NO. 302467 |