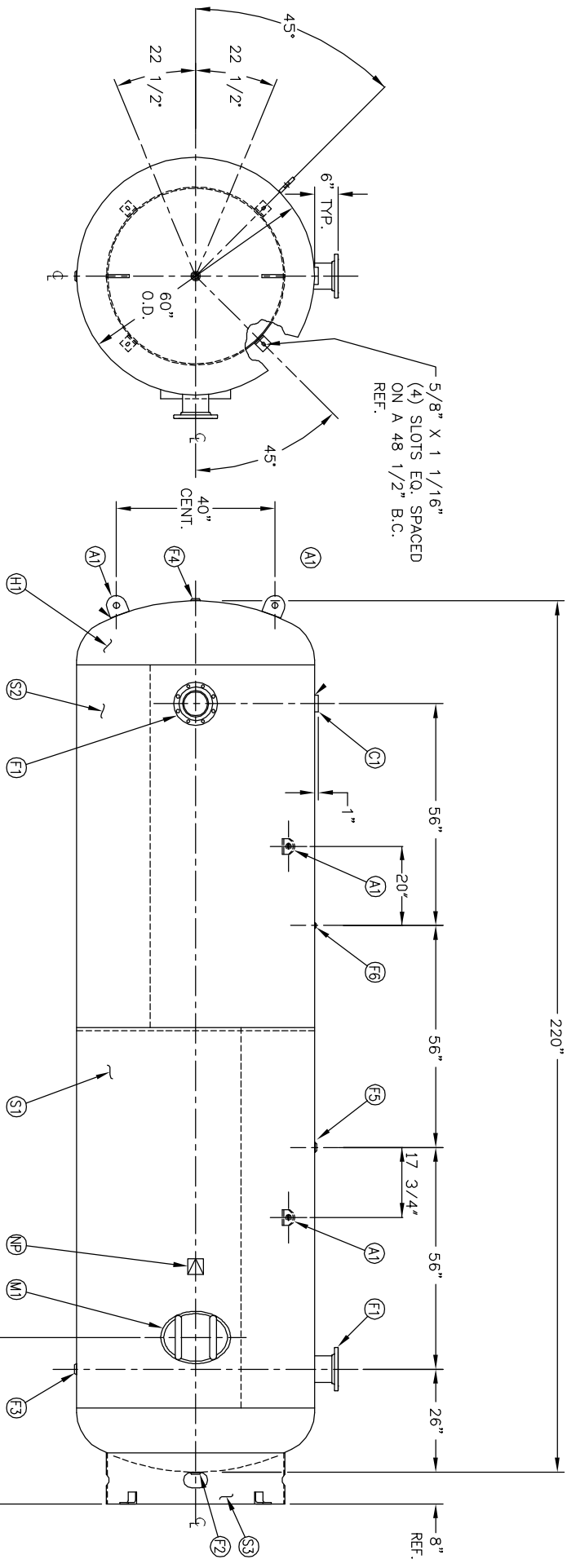


6" NOZZLE DETAIL

MANWAY DETAIL

NO. QTY	DESCRIPTION	SPEC	SUB-DWG.
S1 1			
S2 1			
H1 2	6" 150# ANSI RF SQ. FLANGE	SA-105	
F1 2	6" SCH.80 PIPE X 7 1/2" LONG	SA-106-B	
F2 1	.134 X 8 5/8" O.D. X 6 5/8" I.D. BACKING RING	C1008/SA-36	
F3 1	1.1/4 NPT 1500# FLAT FLANGE	SA-181-70	
F4 1	1.1/4 NPT 1500# RADIAL FLANGE	SA-181-70	
F5 1	1 NPT 1500# RADIAL FLANGE	SA-181-70	
F6 1	1/4 NPT 1500# FLAT FLANGE	SA-181-70	
C1 1	3 NPT 3000# HALF COUPLING	SA-105	
M1 1	12" X 16" X 3/4" X 4" 300# MANWAY	SA-106-C	A84524
A1 4	3/4" X 5" X 5" STANDARD LIFT LUG		A85012
S3 1	STANDARD 8" SKIRT & CLIP ASSY. FOR 60" DIA.		
NP 1	ASME DATA PLATE	C1010	



REV	DATE	BY	REVISION	NOTES	SPECIFICATIONS
1		JC			O.D. 60 LGH. 220 SH. HD.
2		JC			MANIP 165 PSI @ 400 F. HD.
		JC			RT - MDMF -20 F @ 165 PSI (CAL. 2560 SA. 303.21)
		JC			EXMT UG20(f) TEST PSI WT. 4500# CU.T. 336.86
		JC			CORR ALW SH HD
		JC			CRN PENDING CODE ASME SECT.VIII, DIV.1
		JC			WELD DETAILS: M-1932 PER DATE OF DWG/LAST REV
		JC			STD. TOLERANCES (UNLESS OTHERWISE NOTED): M-2461

DRAWN BY	DATE	SCALE:	NONE
APP. BY	DATE	DRAWING NO.	302452
J. REED			

MANCHESTER TANK	60" X 220" VERT. STANDARD AIR RECEIVER	Q:\3000
------------------------	--	---------