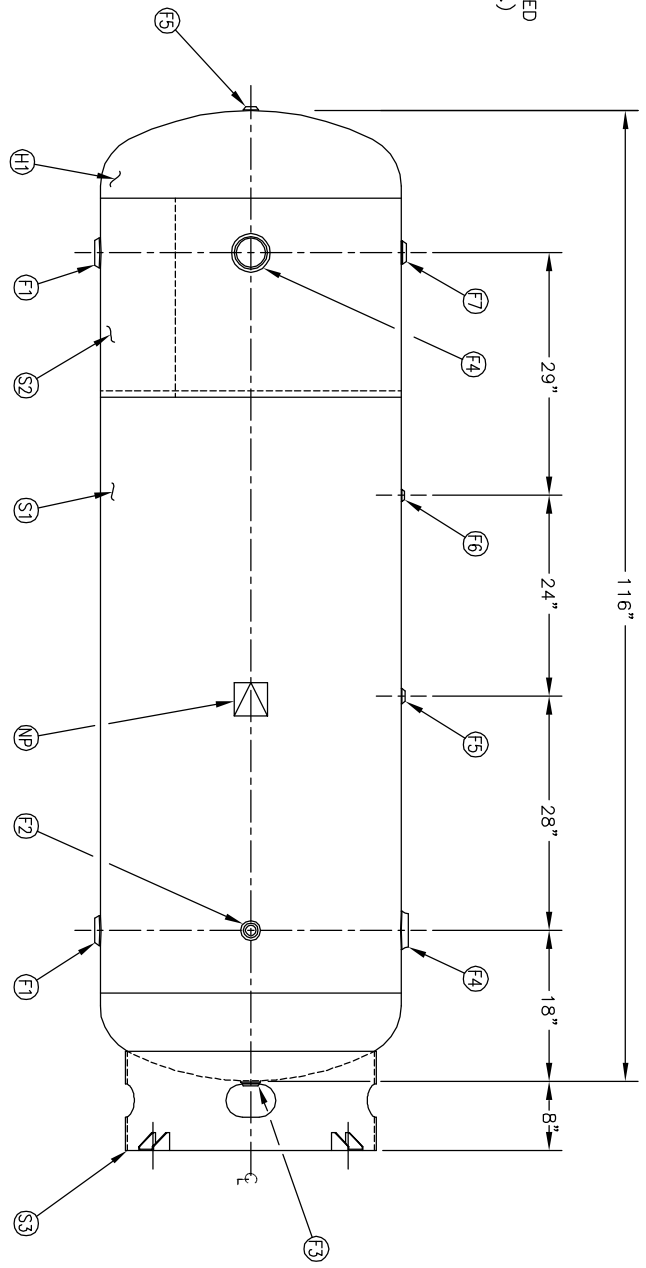
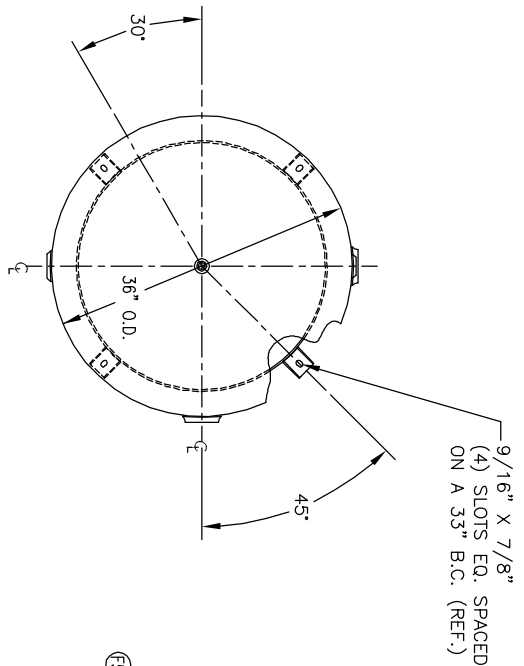


FIND NO.	NPT SIZE
F1	2
F2	1
F3	1
F4	3
F5	1/2
F6	1/4
F7	1-1/2

NO. QTY	DESCRIPTION	SPEC	SUB-DWG.
S1 1			
S2 1			
H1 2	.162 MIN. X 36" O.D. 2:1 ELLIP. HEAD	SA-414-G	
F1 2	2"-NPT 1500# RADIAL FLANGE	SA-181-70	
F2 1	1"-NPT 1500# RADIAL FLANGE	SA-181-70	
F3 1	1"-NPT 1500# FLAT FLANGE	SA-181-70	
F4 2	3"-NPT 1500# RADIAL COUPLING STYLE FLANGE	SA-181-70	
F5 2	1/2"-NPT 1500# FLAT FLANGE	SA-181-70	
F6 1	1/4"-NPT 1500# FLAT FLANGE	SA-181-70	
F7 1	1 1/2"-NPT 1500# RADIAL FLANGE	SA-181-70	
S3 1	STANDARD 8" HIGH SKIRT & CLIP ASSY. FOR 36" DIA	A85004	
NP 1	ASME DATA PLATE	C1010	



ENG. _____ DATE _____
 Q.C. _____ DATE _____

REV	DATE	BY	REVISION	APP	DATE	REV	NOTES	SPECIFICATIONS
1		BS		JLR				O.D. 36 LGH. 116 SH. MAMP 165 PSI @ 400 F. HD. RT- MDMT T@ PSI GALL 500 S.A. 97 EXMT TEST TEST Wt. 950 CUFT. 64 HD XRAY CORR ALW SH CRN --- CODE ASME SECT. VIII, DIV. 1 WELD DETAILS: M-1932 PER DATE OF DWG/LAST REV STD. TOLERANCES (UNLESS OTHERWISE NOTED): M-2461
A		EGB		JA				
B		JC		JC				
C		JPR		JPR				
D		JC		JC				



36" X 116" STD. VERT. AIR REC.

DRAWN BY	DATE	SCALE
BS		NONE
APP. BY	DATE	DRAWING NO.
JR		302436