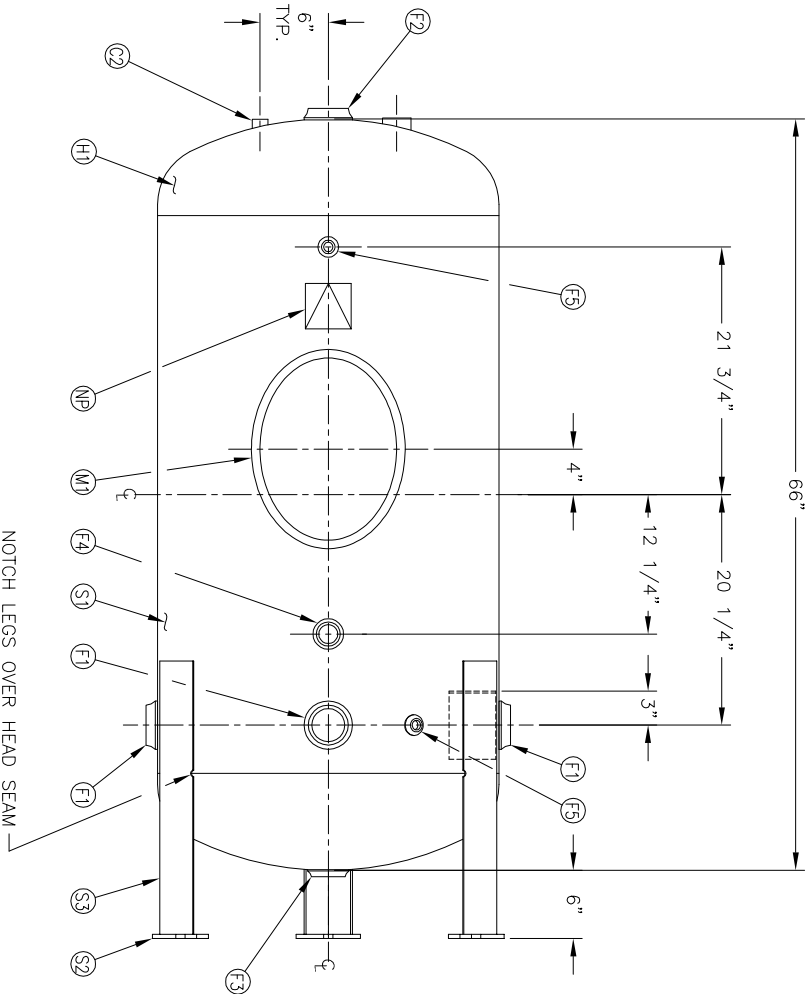
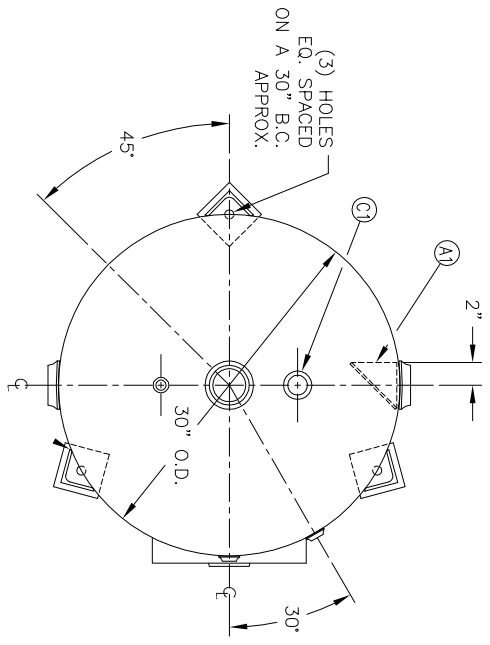


NO. QTY	DESCRIPTION	SPEC	SUB-DWG.
S1 1			
H1 2			
M1 1	12" X 16" X 3/4" X 4" 300# MANWAY	SA-106-C	
F1 3	2 1/2"-NPT 1500# RADIAL FLANGE	SA-181-70	
F2 1	2 1/2"-NPT 1500# FLAT FLANGE	SA-181-70	
F3 1	2"-NPT 1500# FLAT FLANGE	SA-181-70	
C1 1	1 1/2"-NPT 3000# FULL COUPLING	SA-105	
F4 1	1 1/4"-NPT 1500# RADIAL FLANGE	SA-181-70	
C2 1	3/4"-NPT 3000# FULL COUPLING	SA-105	
F5 2	1/2"-NPT 1500# FLAT FLANGE	SA-181-70	
A1 1	BAFFLE		A84451
S2 3	3/8" X 4" X 4" PAD	SA-516-70	
S3 3	1/4" X 3" X 3" ANGLE LEG X 24" LONG	SA-36	
NP 1	ASME DATA PLATE	C1010	

LEG/PAD DETAIL

MANWAY DETAIL



NOTCH LEGS OVER HEAD SEAM

SW/ DATE	BY	REVISION	APP	XREF	REV	NOTES	SPECIFICATIONS	DRAWN BY	DATE	SCALE	DRAWING NO.
						INTERIOR FINISH NOTE 1. 1/8" RADIUS ALL EDGES. 2. GRIND ALL INTERNAL WELDS SMOOTH. 3. SANDBLAST TO NEAR WHITE FINISH. 4. ALL VOIDS AND GAPS TO BE CAULKED 5. COAT WITH DEVCO 233H EPOXY.	O.D. 30 LGTH. 66 MAMP 150 PSI @ 250 F GAL 190 SA WT. 460# CUFT.			NONE	302513



30" X 66" VERT. EPOXY LINED WATER TANK

CODE	ASME SECT.	VIII, DIV. 1	PER DATE OF DWG/LAST REV	APP	BY	DATE	SCALE	DRAWING NO.
WELD DETAILS:	M-1932							
STD. TOLERANCES (UNLESS OTHERWISE NOTED):	M-2461							