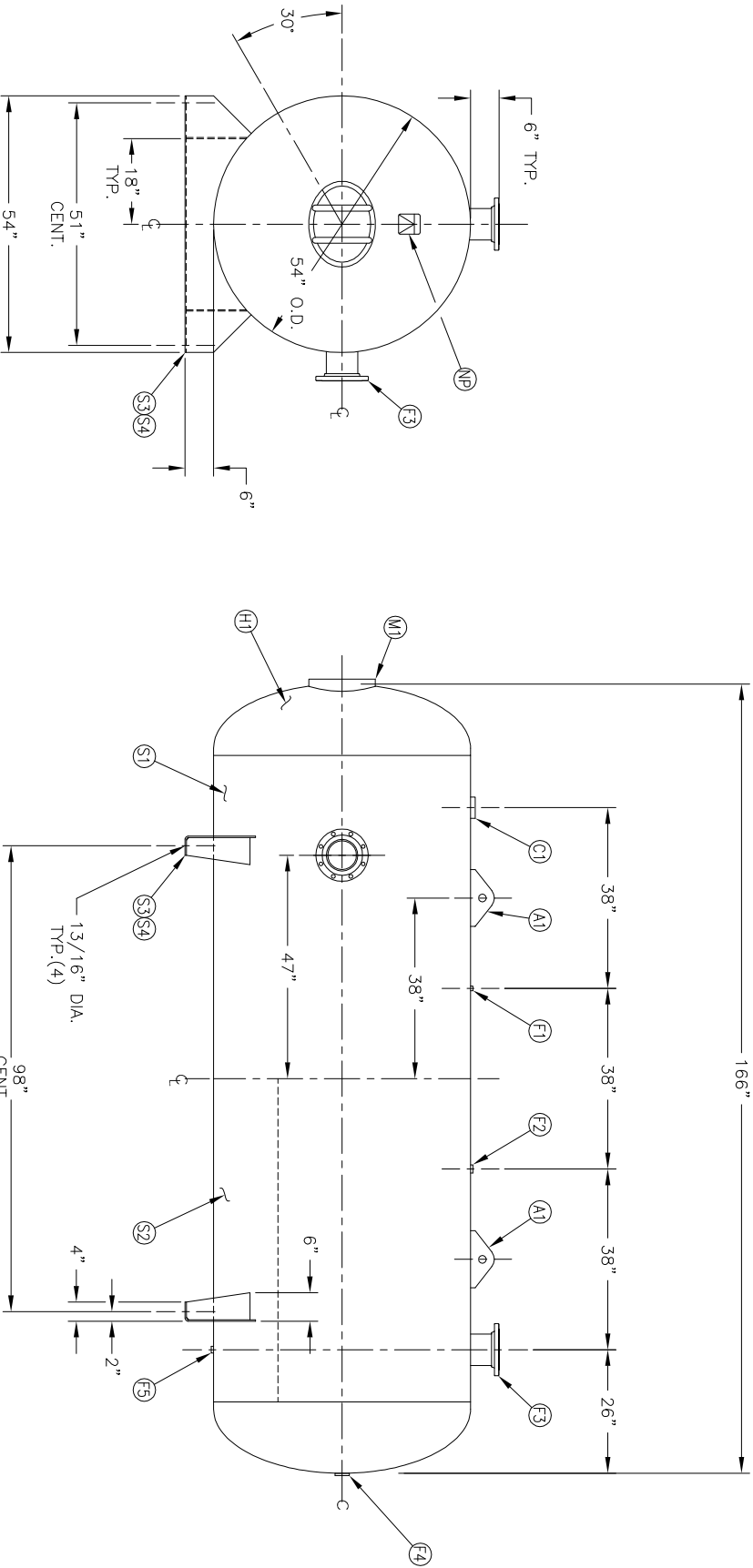


NO. QTY	DESCRIPTION	SPEC	SUB-DWG.
S1 1			
S2 1			
H1 2			
C1 1	3"-NPT 3000# HALF COUPLING	SA-105	
F1 1	1/4"-NPT 1500# FLAT FLANGE	SA-181-70	
F2 1	1"-NPT 1500# RADIAL FLANGE	SA-181-70	
F3 2	6" 150# ANSI RF.SO. FLANGE	SA-105	
F3 2	6" SCH 40 PIPE X 7 1/2" LONG	SA-106-B	
F4 1	.134 X 8 5/8" O.D. X 6 5/8" I.D. BACKING RING	C1008	
F5 1	2"-NPT 1500# FLAT FLANGE	SA-181-70	
M1 1	3/4"-NPT 1500# RADIAL FLANGE	SA-181-70	
S3 2	12" X 16" X 3/4" X 4" 300# MANWAY	SA-675-70/SA-106-C	A87973
S4 4	1/4" X 17 1/2" X 54" SADDLE BRACKET		A87973
S4 4	1/4" X 6" X 12 1/2" GUSSET		A87973
A1 2	3/4" X 5" X 12" STANDARD HORIZ. LIFT LUG		A84358
NP 1	ASME DATA PLATE	C1010	



NOTES  
 BREAK ALL EXPOSED INTERIOR NOZZLE EDGES  
 ALL FLANGE BOLT HOLES TO STRADDLE VESSEL CENTERLINES

DATE	BY	REVISION	APP	XREF	REV

SPECIFICATIONS

O.D. 54 LGH. 166  
 MAMP 137 PSI @ 450 F  
 SH. HD.  
 MAT'L. MAT'L.  
 GAL. 1550 SA.207.90  
 WT. 2600# CUFT. 204.38  
 CORR ALW --- SH --- HD  
 CODE ASME SECT. VIII, DIV.1  
 PER DATE OF DWG/LAST REV

**MANCHESTER TANK**  
 Q. \ 3000  
 54" X 166"  
 STANDARD AIR RECEIVER  
 SCALE: NONE  
 DRAWING NO. 302495

WELD DETAILS: M-1932  
 STD. TOLERANCES (UNLESS OTHERWISE NOTED): M-2461  
 CRR ---  
 DRAWN BY DATE  
 APP. BY DATE