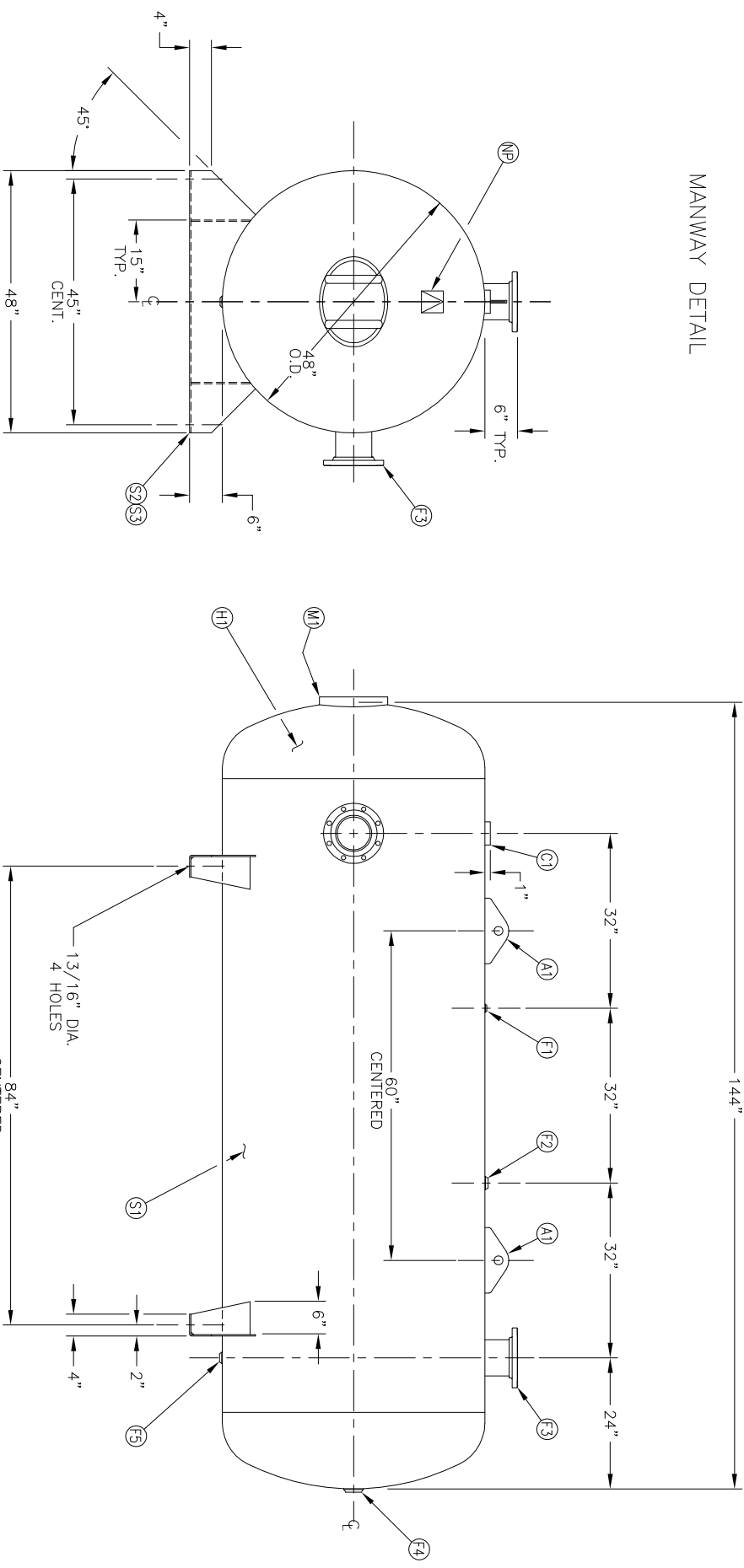


NO. QTY	DESCRIPTION	SPEC	SUB-DWG.
S1 1			
H1 2			
C1 1	3 NPT 3000# HALF COUPLING	SA-105	
F1 1	1/4 NPT 1500# FLAT FLANGE	SA-181-70	
F2 1	1 NPT 1500# RADIAL FLANGE	SA-181-70	
F3 2	6" 150# ANSI REF.SO. FLANGE	SA-181-70	
F3 2	6" SCH.40 PIPE X 7 1/2" LONG	SA-106-B	
F3 2	.134 X 8 5/8" O.D. X 6 5/8" I.D. BACKING RING	C1010/SA-36	
F4 1	2 NPT 1500# FLAT FLANGE	SA-181-70	
F5 1	3/4 NPT 1500# RADIAL FLANGE	SA-181-70	
M1 1	12" X 16" X 3/4" X 4" 300# MANWAY	SA-106-C	
S2 2	1/4" X 15 11/16" X 48" SADDLE BRACKET	A91614	
S3 4	1/4" X 6" X 10 11/16" GUSSET	A91615	
A1 2	3/4" X 5" X 12" STANDARD LIFT LUG FOR HORIZ.	A84388	
NP 1	ASME DATA PLATE	C1010	



SWM DATE BY	REVISION	APP XREF REV	NOTES
<p>0.D. 48 LGH. 144 MAMP 137 PSI @ 450 F CRN. M169356 WELD DETAILS: M-1932 STD. TOLERANCES (UNLESS OTHERWISE NOTED): M-2461</p>			
<p>84" CENTERED 13/16" DIA. 4 HOLES 60" CENTERED 6" TYP. 48" O.D. 6" TYP. 45" CENT. 45° 4"</p>			
<p>144" 32" 32" 32" 24" 6" 2" 4"</p>			
<p>48" X 144" STANDARD AIR REC. SCALE: NONE DRAWING NO. 302492</p>			

