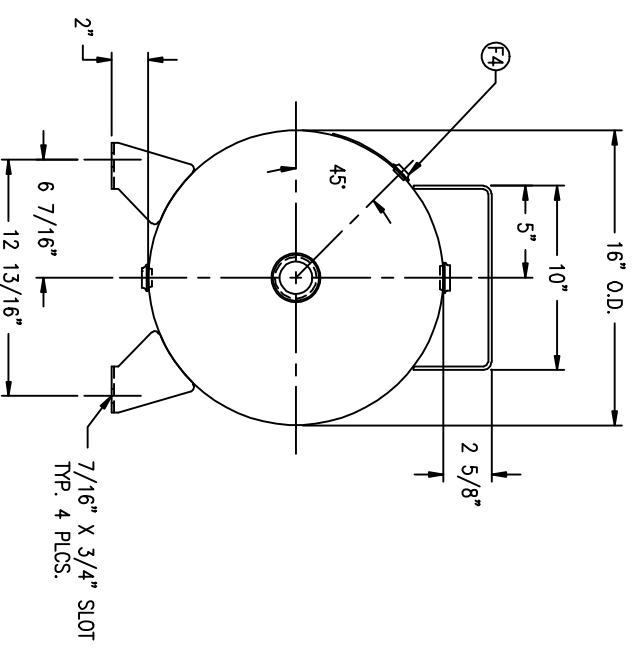
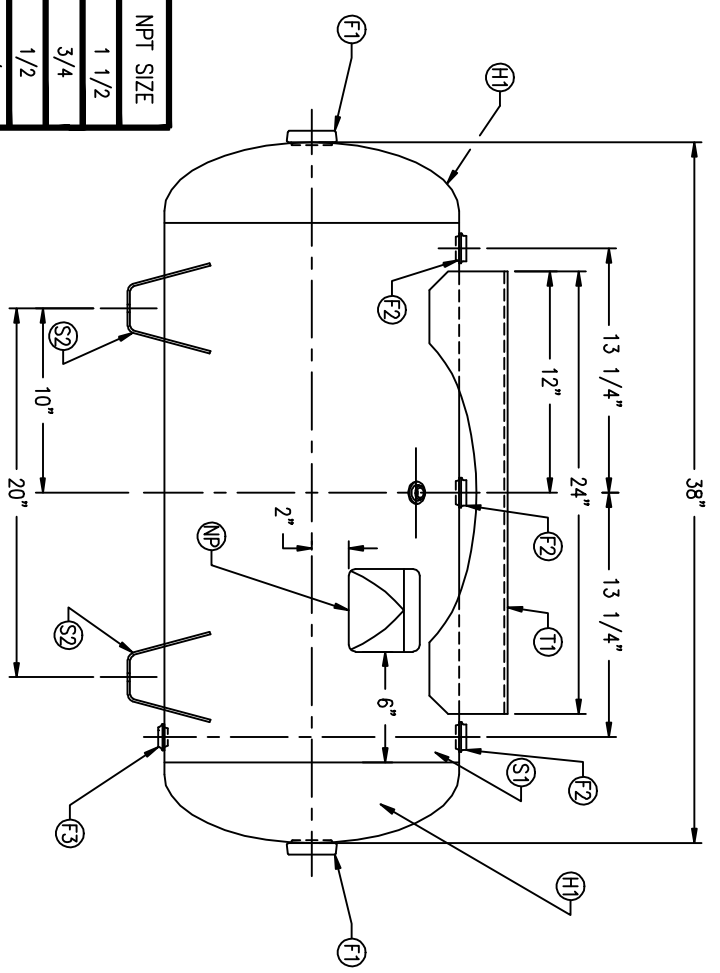


CODE/ADDENDA _____ APPROVED _____
 RELEASED FOR PRODUCTION _____
 Q.C. _____ DATE _____



FIND NO.	NPT SIZE
F1	1 1/2
F2	3/4
F3	1/2
F4	1/4

SM. DATE	BY	REVISION

APR. 1932

REV. 1

NOTES

SPECIFICATIONS

O.D. 16 LGTH. 38
 MAWP 300 PSI @ 650 F
 GRN H5007.1234567890
 WELD DETAILS: M-1932
 STD. TOLERANCES (UNLESS OTHERWISE NOTED): M-2461

GAL. 30 S.A. 14.1
 WT. 140# CU.FT. 4.0
 CODE ASME UW-12(c)
 PER DATE OF DWG/LAST REV



1000221000302

HORIZONTAL AIR RECEIVER

DRAWN BY	DATE	SCALE: NONE
APP. BY	DATE	DRAWING NO. 302471