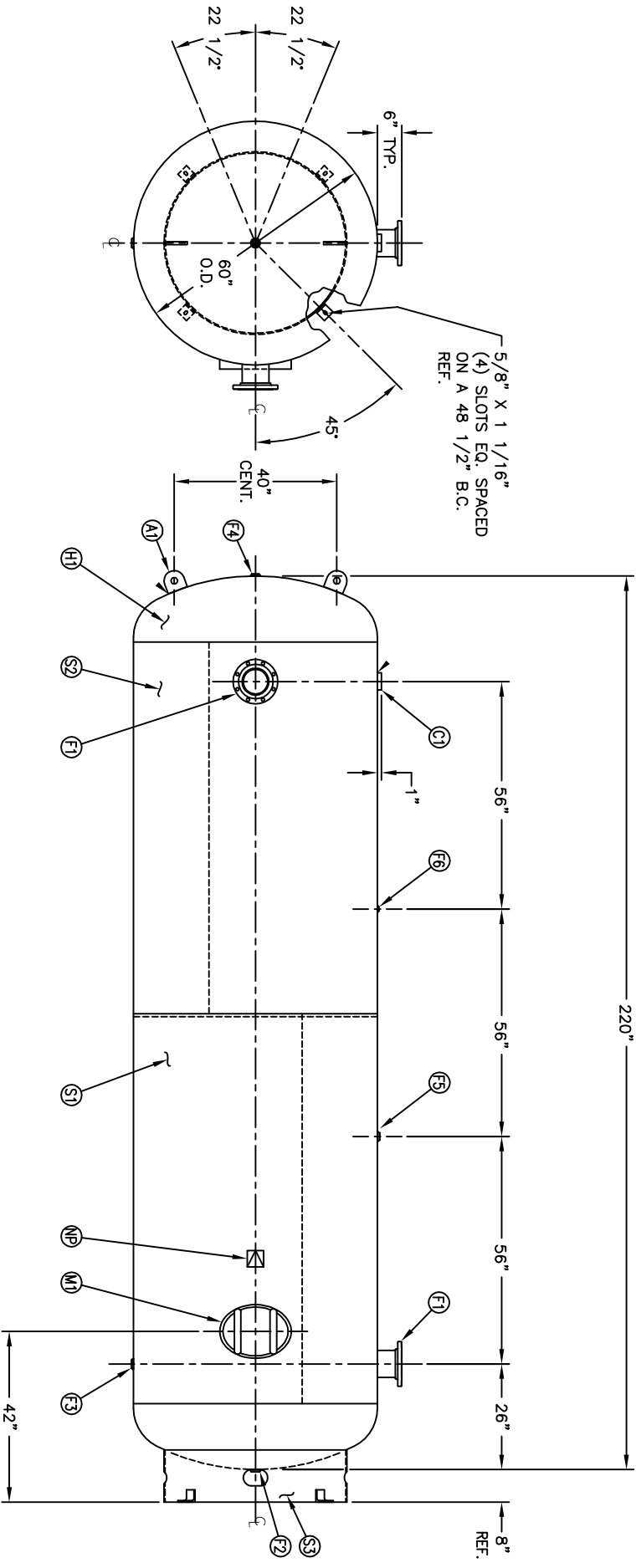


6" NOZZLE DETAIL

MANWAY DETAIL

NO. QTY	DESCRIPTION	SPEC	SUB-DWG.
S1 1			
S2 1			
H1 2			
F1 2	6" 150# ANSI RF-SO. FLANGE	SA-105	
F1 2	6" SCH.80 PIPE X 7 1/2" LONG	SA-106-B	
F1 2	.134 X 8 5/8" O.D. X 6 5/8" I.D. BACKING RING	C1008/SA-36	
F2 1	1.1/4 NPT 1500# FLAT FLANGE	SA-181-70	
F3 1	1.1/4 NPT 1500# RADIAL FLANGE	SA-181-70	
F4 1	1 NPT 1500# FLAT FLANGE	SA-181-70	
F5 1	1 NPT 1500# RADIAL FLANGE	SA-181-70	
F6 1	1/4 NPT 1500# FLAT FLANGE	SA-181-70	
C1 1	3 NPT 3000# HALF COUPLING	SA-105	
M1 1	12" X 16" X 3/4" X 4" 300# MANWAY	SA-106-C	
A1 2	3/4" X 5" X 5" STANDARD LIFT LUG	SA-106-C	A84524
S3 1	STANDARD 8" SKIRT & CLIP ASSY. FOR 60" DIA.		A85012
NP 1	ASME DATA PLATE	C1010	



SYMBOL	DATE	BY	REVISION	APP. XREF. REQ.	NOTES	SPECIFICATIONS
						O.D. 60 LGTH. 220 MAWP 165 PSI @ 450 F QAL 2560 WT. 4500# CODE ASME SECT.VIII, DIV.1 PER DATE OF DWG/LAST REV STD. TOLERANCES (UNLESS OTHERWISE NOTED): M-2461


MANCHESTER VALVE
 Q:\3000

**60" X 220" VERT.
 STANDARD AIR RECEIVER**

SCALE: NONE	DRAWING NO. 302452
DATE	DATE
APP. BY	DATE