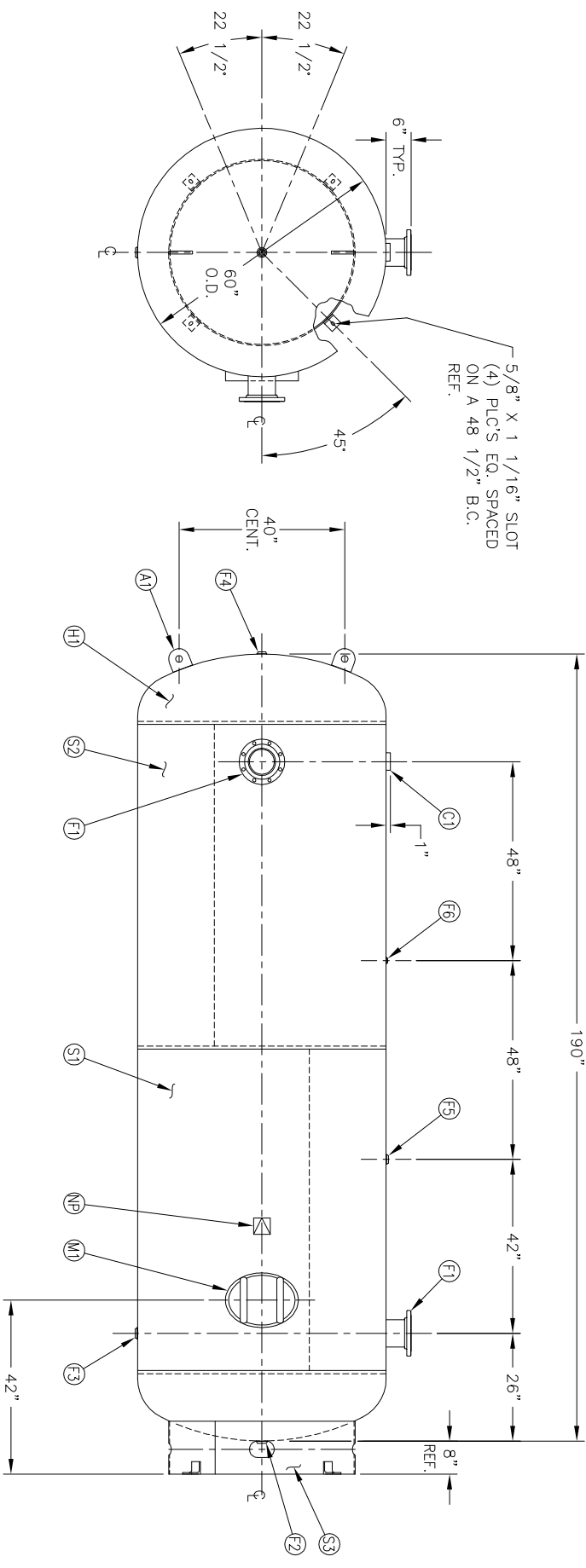


6" NOZZLE DETAIL

MANWAY DETAIL

NO.	QTY.	DESCRIPTION	SPEC	SUB-DWG.
S1	1			
S2	1			
H1	2			
F1	2	6" 150# ANSI RF. SO. FLANGE	SA-105	
F1	2	6" SCH. 40 PIPE X 7 1/2" LONG	SA-106-B	
F1	2	.134 X 8 5/8" O.D. X 6 5/8" I.D. BACKING RING	C1008/SA-36	
F2	1	1.1/4 NPT 1500# FLAT FLANGE	SA-181-70	
F3	1	1.1/4 NPT 1500# RADIAL FLANGE	SA-181-70	
F4	1	1 NPT 1500# FLAT FLANGE	SA-181-70	
F5	1	1"-NPT 1500# RADIAL FLANGE	SA-181-70	
F6	1	1/4 NPT 1500# FLAT FLANGE	SA-181-70	
C1	1	3 NPT 3000# HALF COUPLING	SA-105	
M1	1	12" X 16" X 3/4" X 4" 300# MANWAY	SA-615-70 / SA-106-C	
A1	2	3/4" X 5" X 5" STANDARD LIFT LUG		A84524
S3	1	STANDARD 8" SKIRT & CLIP ASSY. FOR 60" DIA.		A85012
NP	1	ASME DATA PLATE	C1010	



SW	DATE	BY	REVISION	APP	XREF	REV	NOTES	SPECIFICATIONS	DRAWN BY	DATE	SCALE	DRAWING NO.
								O.D. 60 LGH. 190 MAMP 137 PSI @ 450 F CRN. M1603.54 WELD DETAILS: M-1932 STD. TOLERANCES (UNLESS OTHERWISE NOTED): M-2461			NONE	302448
									 MANCHESTER TANK Q: 3000 \			
									VERTICAL AIR RECEIVER			