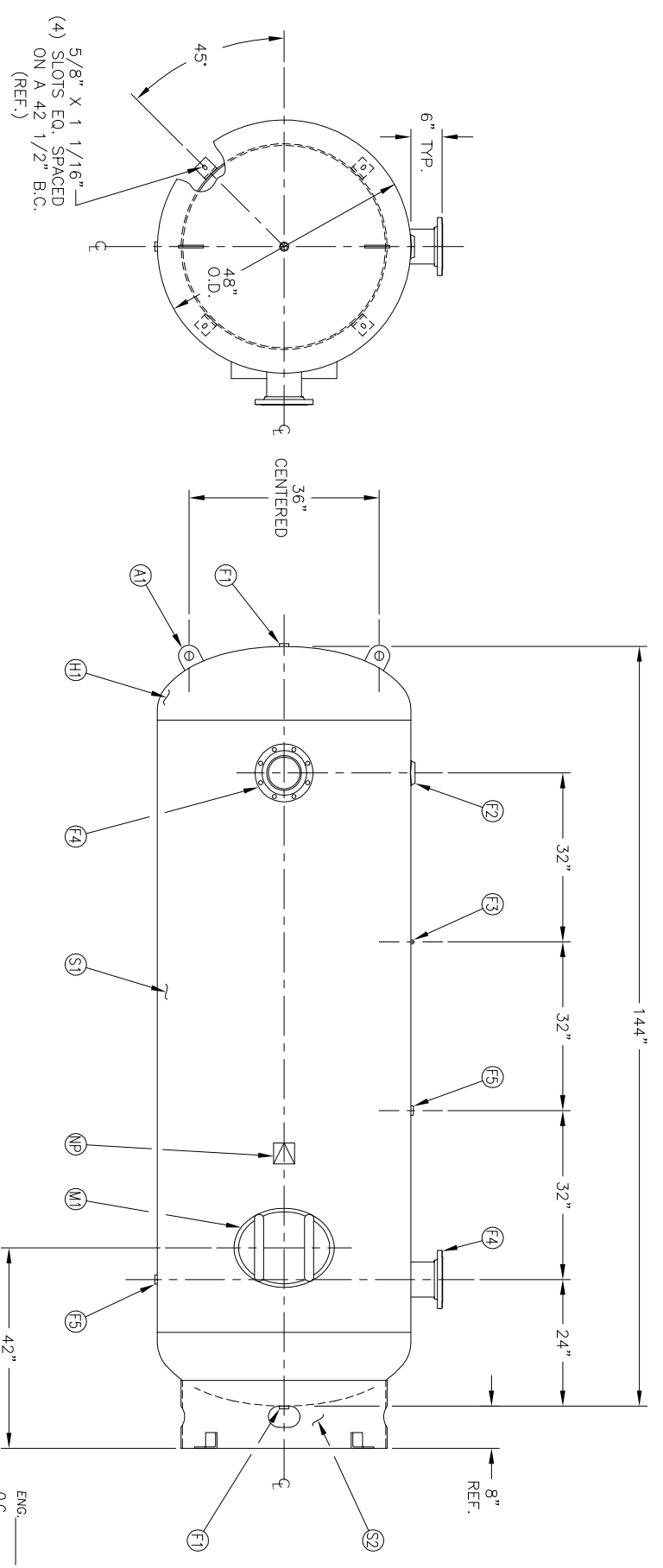


6" NOZZLE DETAIL

MANWAY DETAIL

NO. QTY	DESCRIPTION	SPEC	SUB-DWG.
S1 1			
H1 2			
F1 2	1 NPT 1500# FLAT FLANGE	SA-181-70	
F2 1	3 NPT 1500# RADIAL FLANGE	SA-181-70	
F3 1	1/4 NPT 1500# FLAT FLANGE	SA-181-70	
F4 2	6" 150# ANSI RF.50. FLANGE	SA-105	
F4 2	6" SCH.80 PIPE X 7 1/2" LONG	SA-106-B	
F4 2	.134 X 8 5/8" O.D. X 6 5/8" I.D. BACKING RING	C1008/SA-36	
F5 2	1 NPT 1500# RADIAL FLANGE	SA-181-70	
M1 1	12" X 16" X 3/4" X 4" 300# MANWAY	SA-106-C	
A1 2	1/2" X 4" X 4" STANDARD LIFT LUG		A84386
S2 1	STANDARD 8" SKIRT & CLIP ASSY. FOR 48" DIA. TANK		A85008
NP 1	ASME DATA PLATE	C1010	



ENG. \_\_\_\_\_ DATE \_\_\_\_\_  
 O.C. \_\_\_\_\_ DATE \_\_\_\_\_

REV	DATE	BY	REVISION	APP	XREF	REV	NOTES

**SPECIFICATIONS**  
 O.D. 48 LGH. 144  
 MAMP 200 PSI @ 400 F  
 QAL. 1060  
 WT. 2500#

**STANDARD AIR RECEIVER**  
 48" X 144" VERT.  
 Q. 3000

**MANCHESTER TANK**  
 CODE ASME SECT.VIII, DIV.1  
 WELD DETAILS: M-1932  
 PER DATE OF DWG/LAST REV  
 STD. TOLERANCES (UNLESS OTHERWISE NOTED): M-2461

NO.	DATE	BY	SCALE	DRAWING NO.

SCALE: NONE  
 DRAWING NO. 302444