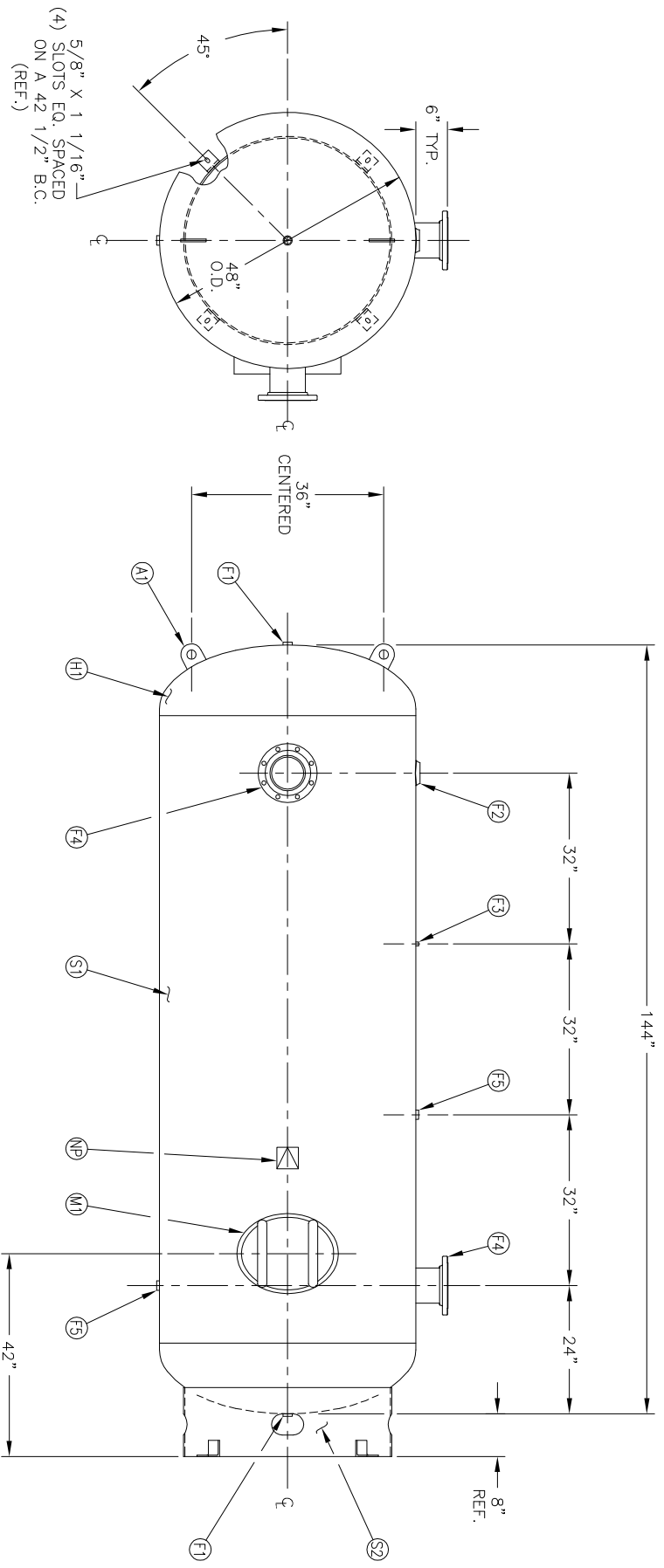


NO. QTY	DESCRIPTION	SPEC	SUB-DWG.
S1 1			
H1 2			
F1 2	1 NPT 1500# FLAT FLANGE	SA-181-70	
F2 1	3 NPT 1500# RADIAL FLANGE	SA-181-70	
F3 1	1/4 NPT 1500# FLAT FLANGE	SA-181-70	
F4 2	6" 150# ANSI RF. SO. FLANGE	SA-105	
F4 2	6" SCH.80 PIPE X 7 1/2" LONG	SA-106-B	
F4 2	.134 X 8 5/8" O.D. X 6 5/8" I.D. BACKING RING	C1008/SA-36	
F5 2	1 NPT 1500# RADIAL FLANGE	SA-181-70	
M1 1	12" X 16" X 3/4" X 4" 300# MANWAY	SA-675-70 / SA-106-C	
A1 2	1/2" X 4" X 4" STANDARD LIFT LUG		A84386
S2 1	STANDARD 8" SKIRT & CLIP ASSY. FOR 48" DIA. TANK		A85008
NP 1	ASME DATA PLATE	C1010	



(4) 5/8" X 1 1/16" SLOTS EQ. SPACED ON A 42" B.C. (REF.)

SW	DATE	BY	REVISION	APP	XREF	REV	NOTES	SPECIFICATIONS	MANCHESTER TANK	SCALE	DRAWING NO.
								O.D. 48 LGTH. 144 MAMP 165 PSI @ 450 F CRN L8976.5C WELD DETAILS: M-1932 STD. TOLERANCES (UNLESS OTHERWISE NOTED): M-2461	MANCHESTER TANK Q:\3000	NONE	302443
48" X 144" VERT. STANDARD AIR RECEIVER											
CODE ASME SECT.VIII, DIV.1 PER DATE OF DWG/LAST REV											
DRAWN BY DATE APP. BY DATE											