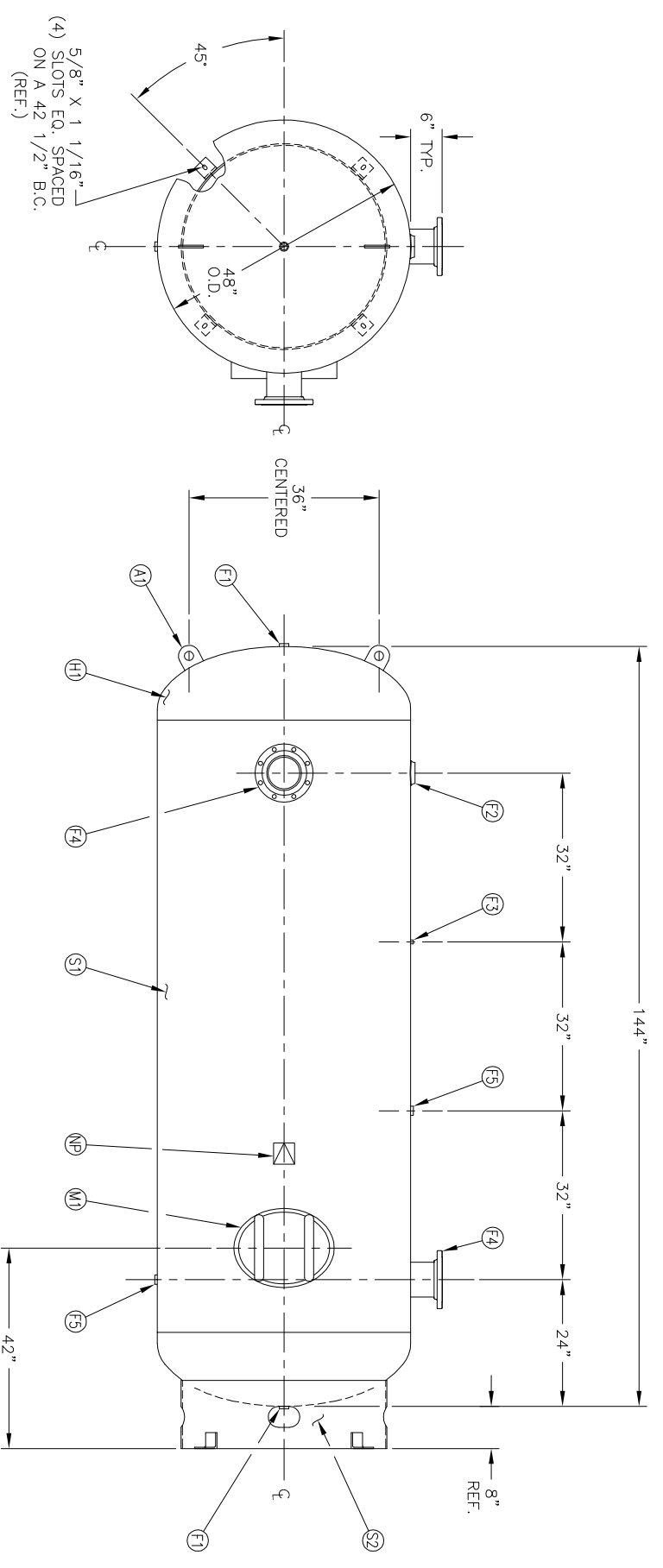


6" NOZZLE DETAIL

MANWAY DETAIL

NO. QTY	DESCRIPTION	SPEC	SUB-DWG.
S1 1			
H1 2			
F1 2	1 NPT 1500# FLAT FLANGE	SA-181-70	
F2 1	3 NPT 1500# RADIAL FLANGE	SA-181-70	
F3 1	1/4 NPT 1500# FLAT FLANGE	SA-181-70	
F4 2	6" 150# ANSI RF. SO. FLANGE	SA-105	
F4 2	6" SCH.40 PIPE X 7 3/4" LONG	SA-106-B	
F4 2	.134 X 8 5/8" O.D. X 6 5/8" I.D. BACKING RING	C1008/SA-36	
F5 2	1 NPT 1500# RADIAL FLANGE	SA-181-70	
M1 1	12" X 16" X 4" 300# MANWAY	SA-675-70/SA-106-C	
A1 2	1/2" X 4" X 4" STANDARD LIFT LUG		A84386
S2 1	STANDARD 8" SKIRT & CLIP ASSY. FOR 48" DIA. TANK		A85008
NP 1	ASME DATA PLATE	C1010	



(4) 5/8" X 1 1/16" SLOTS EQ. SPACED ON A 42" 1/2" B.C. (REF.)

REV	DATE	BY	REVISION	APP	XREF	REV	NOTES

SPECIFICATIONS

O.D. 48 LGH. 144
 MAMP 137 PSI @ 450 F

QAL 1060 WT. 2100#
 CRN L8977.5C

CODE ASME SECT. VIII, DIV. 1
 PER DATE OF DWG/LAST REV

WELD DETAILS: M-1932
 STD. TOLERANCES (UNLESS OTHERWISE NOTED): M-2461



48" X 144" VERT.
 STANDARD AIR RECEIVER

SCALE:	NONE
DRAWING NO.	302442