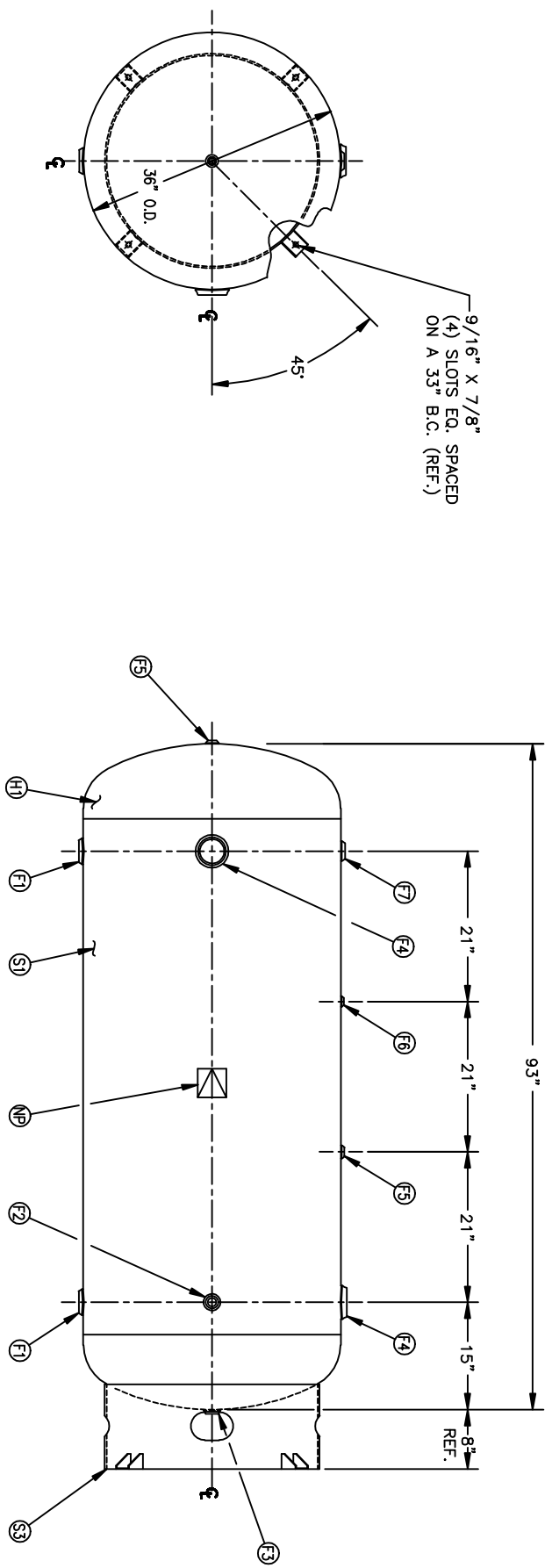


FIND NO.	NPT SIZE
F1	2
F2	1
F3	1
F4	3
F5	1/2
F6	1/4
F7	1 1/2



DATE	BY	REVISION	APP	REF	REV	NOTES

SPECIFICATIONS	
O.D. 36	LEN. 93
MAWP 165 PSI @ 650 °F	
CRN L8907.5C	
WELD DETAILS: M-1932	
SID. TOLERANCES (UNLESS OTHERWISE NOTED): M-2461	
GAL. 400	S.A. 78.53
WT. 740	CU.FT. 50.33
CODE ASME SECT. VIII, DIV.1	
PER DATE OF DWG/LAST REV	

36" X 93" VERT. STANDARD AIR RECEIVER	Q.A. 3000
DRAWN BY: _____ DATE: _____	SCALE: NONE
APP. BY: _____ DATE: _____	DRAWING NO. 302432