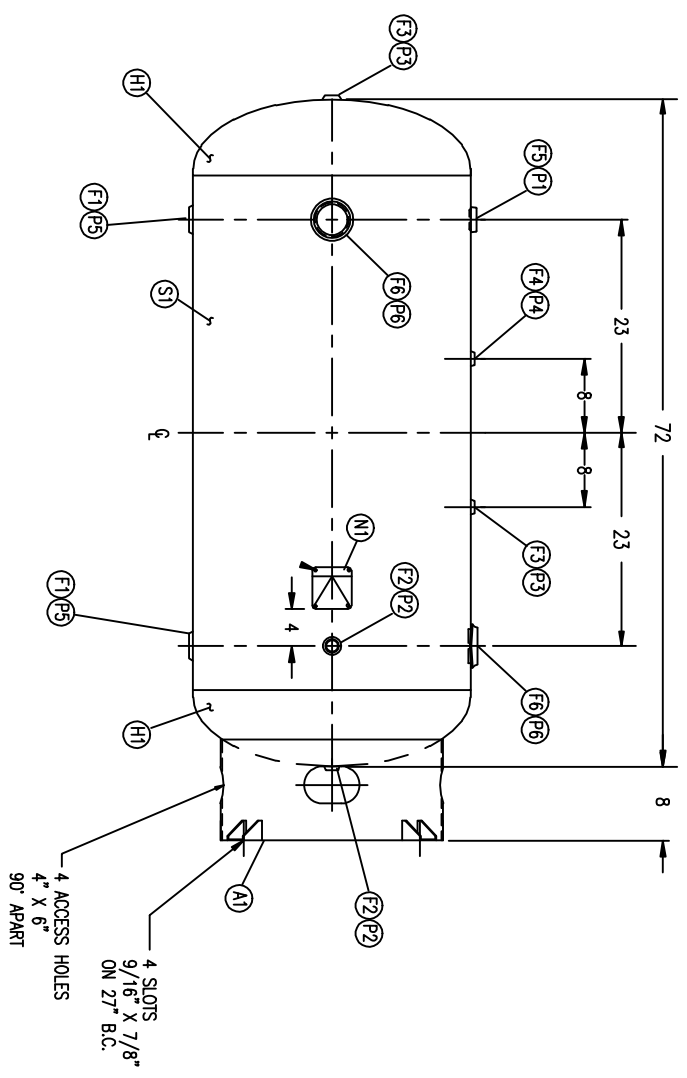
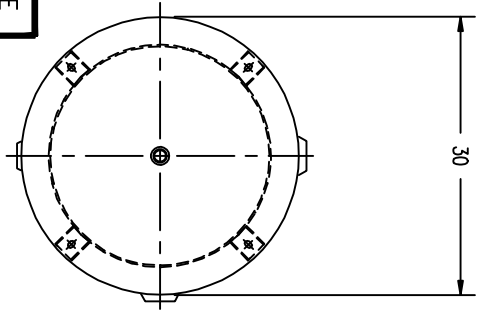


CODE/ADDENDA \_\_\_\_\_ APPROVED \_\_\_\_\_  
 RELEASED FOR PRODUCTION \_\_\_\_\_  
 O.C. \_\_\_\_\_ DATE \_\_\_\_\_



FIND NO.	NPT SIZE
F1	2
F2	1
F3	1/2
F4	1/4
F5	1 1/2
F6	3

SYML	DATE	BY	REVISION

APP \_\_\_\_\_ NOTES \_\_\_\_\_

SPECIFICATIONS

O.D.: 30 LGTH: 72  
 MAMP: 300 PSI @ 400° F

CRN# F1629.123456

GAL: 200 SA: 51 ft 2  
 WT: 735 # CULFT: 27  
 CODE: ASME / NB  
 PER DATE OF DWG/LAST REV

WELD DETAILS M-1932  
 STD. TOLERANCES UNLESS OTHERWISE NOTED M-2461



VERTICAL AIR RECEIVER  
 200 GALLON

REF 273007200239

DRAWN BY	DATE	SCALE	DRAWING NO.
APP. BY	DATE	NONE	502427