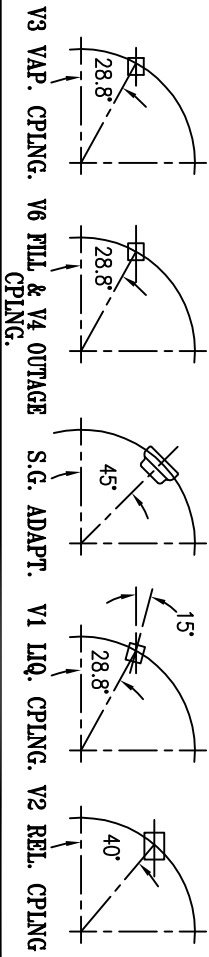
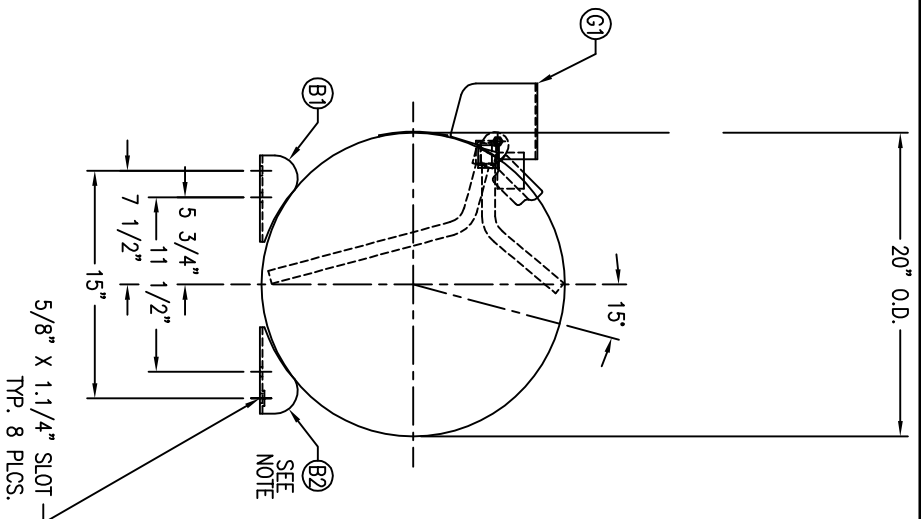
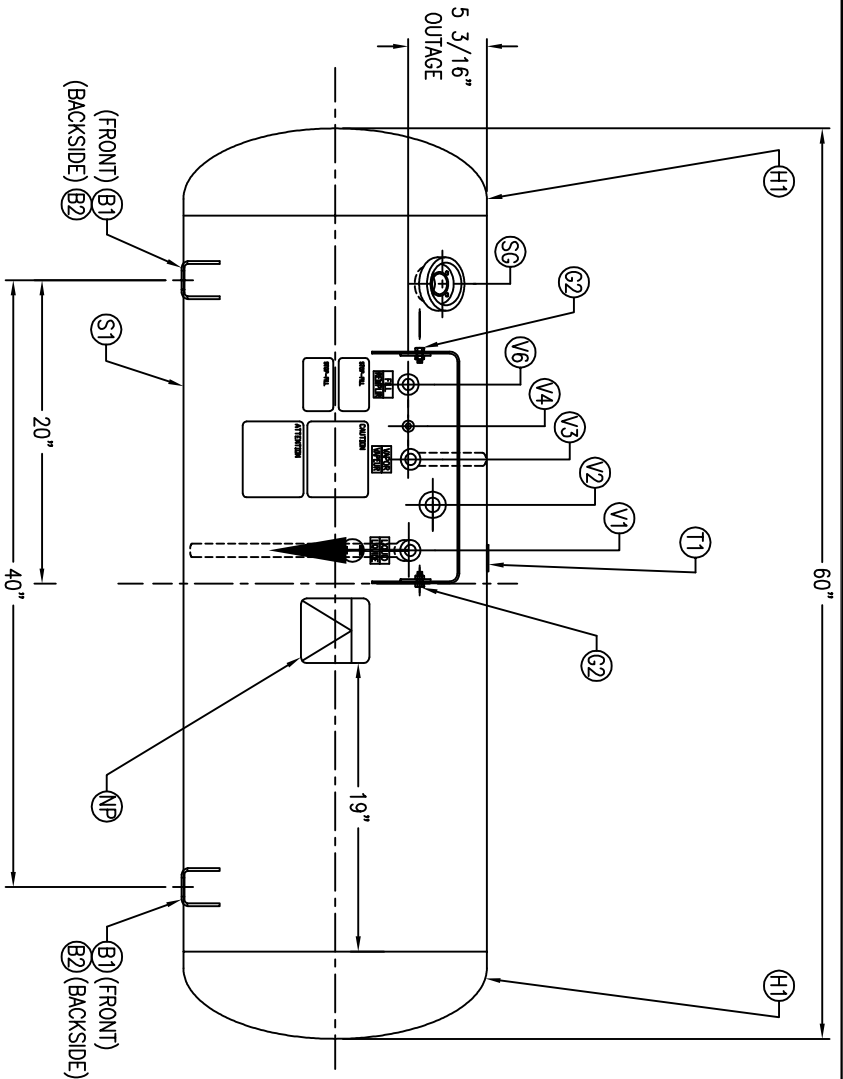


CODE/ADDENDA 2013 APPROVED DP  
 RELEASED FOR PRODUCTION  
 Q.C. \_\_\_\_\_ DATE \_\_\_\_\_



- NOTES
- B2 BRACKET HAS 1/2-13 WELD NUT.
  - INTERIOR AND EXTERIOR MUST BE CLEAN AND FREE OF ANY MIGRATORY SCALE, WELD SPATTER, RUST, MOISTURE AND ALL FOREIGN MATERIAL.

SYMBOL	DATE	BY	REVISION	APP	XREF	REV	NOTES
D		AW					
E		DP					
F		DW					
G		DW					

SPECIFICATIONS

O.D. 20	LGTH. 60	SH.
MAMP 312	PSI @ 650 °F	HD.
RT - MDMT -20 °F @ 312 PSI	GAL. 74.2	S.A. 27.5
EXMT TEST PSI	WT. 225#	CU.FT. 9.9
XRAY W	CORR ALW	SH
CRN M4741.5C	CODE ASME SECT. VIII, DIV. 1	HD
WELD DETAILS: M-1932	PER DATE OF DWG/LAST REV	
STD. TOLERANCES (UNLESS OTHERWISE NOTED): M-2461		



\\INTERTRN\APPS\DWG\2000

MOTORFUEL TANK

DRAWN BY:	DATE	SCALE:	NONE
DQ		DWG NO.	200247
APPR. BY:	DATE		
RM			