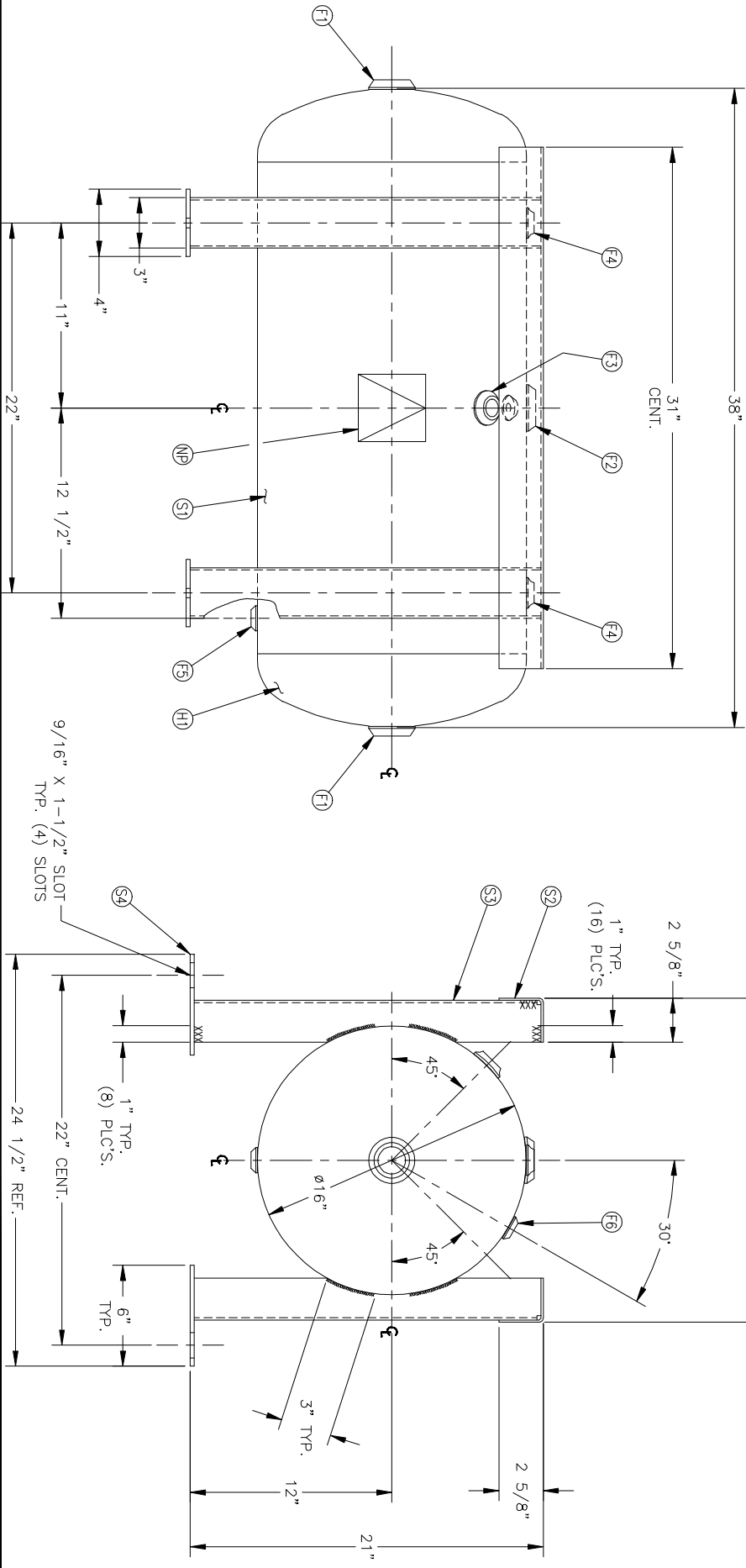
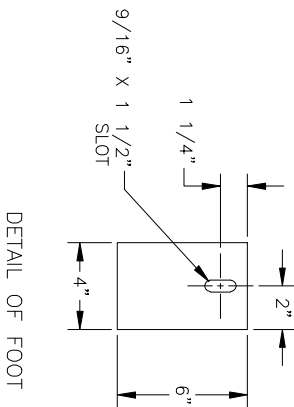


NO. QTY.	DESCRIPTION	SPEC	SUB-DWG.
S1 1			
H1 2	1 1/2"-NPT 1500# FLAT FLANGE	SA-181-70	
F1 2	1 1/2"-NPT 1500# RADIAL FLANGE	SA-181-70	
F2 1	3/4"-NPT 1500# RADIAL FLANGE	SA-181-70	
F3 1	1/2"-NPT 1500# FLAT FLANGE	SA-181-70	
F4 2	1/4"-NPT 1500# FLAT FLANGE	SA-181-70	
F5 1	1/8"-NPT 1500# FLAT FLANGE	SA-181-70	
F6 1	1/8"-NPT 1500# FLAT FLANGE	SA-181-70	
S2 2	.134 X 5" X 3.1" FORMED RAIL	C1008	
S3 4	.134 X 7 1/2" X 20 7/8" FORMED LEG	C1008	
S4 4	1/4" X 4" X 6" FOOT	C1008	
NP 1	ASME DATA PLATE	C1010	



REV	DATE	BY	REVISION	APP	XREF	REV	NOTES

SPECIFICATIONS	
OLD 16 LGTH. 38	GAL. 30
MANP 200 PSI @ 650 F.	WT. 125#
GRN. F2151.1C	CORR. ALW. --- SH --- HD
WELD DETAILS. M-1932	CODE ASME SECT. VIII, DIV. 1
STD. TOLERANCES (UNLESS OTHERWISE NOTED): M-2461	PER DATE OF DWG/LAST REV.

MANCHESTER TANK

16" X 38" STD. HORIZ. FRAME-MOUNT REC.

SCALE: NONE

DRAWING NO. 305438

MANUFACTURED BY: _____ DATE: _____

SCALE: NONE

DRAWING NO. 305438