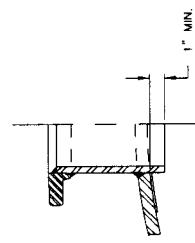
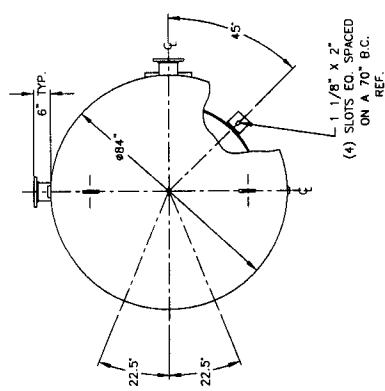
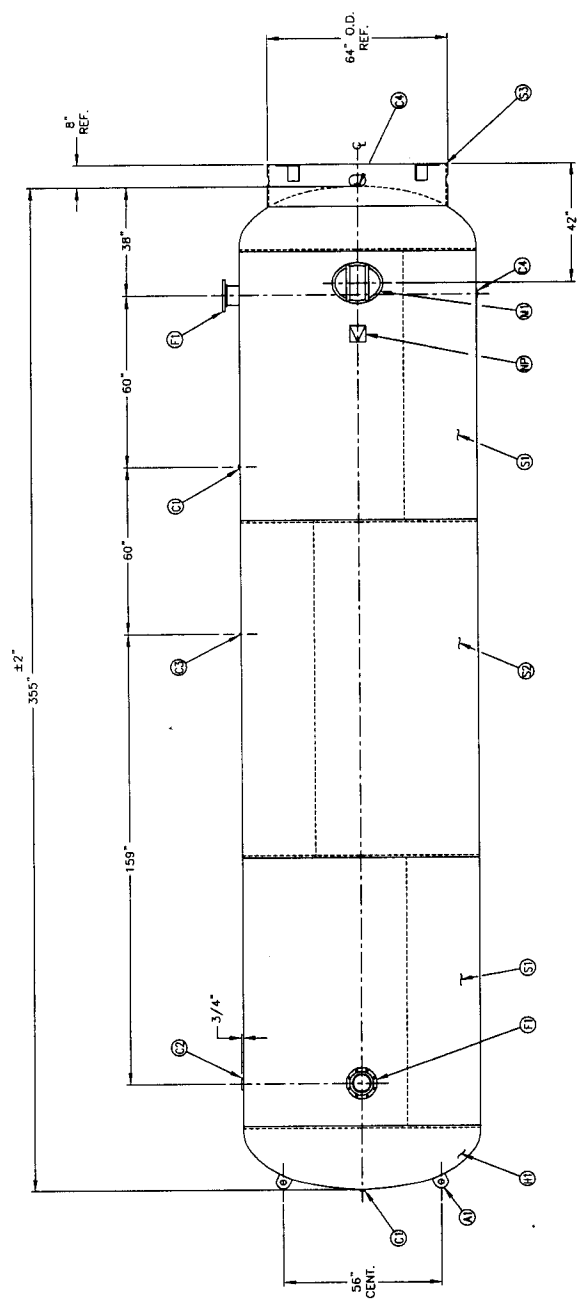
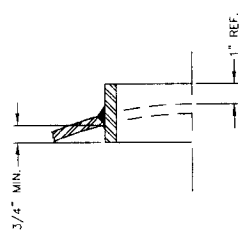


NO	QTY	DESCRIPTION	SPEC	SUB-DWG
S1	2			
H1	2			
C1	2	1" NPT 3000# FULL COUPLING	SA-105	
C2	1	3" NPT 3000# HALF COUPLING	SA-105	
C3	1	1/4" NPT 3000# FULL COUPLING	SA-105	
C4	2	1/4" NPT 3000# HALF COUPLING	SA-105	
F1	2	6" 150# ANSI RF. SQ. FLANGE	SA-105	
F2	2	6" SCH.80 PIPE X 7 1/2" LONG	SA-106-B	
F3	2	1.34 X 8 5/8" O.D. X 6 5/8" I.D. BACKING RING	C1008	
M1	1	12" X 16" X 1" X 6" 300# MANWAY	SA-106-C	
S3	1	STANDARD 8" SKIRT ASSEMBLY FOR 84" DIA. TANK	AB6006	
A1	2	1" X 6" X 6" STANDARD LIFT LUG	AB6004	
A2	4	3/16" X 2" X 260 3/16" BACKING RING	C1010	
NP	1	ASME DATA PLATE	C1010	



6" NOZZLE DETAIL



MANCHESTER
8000 GALLON STANDARD VERT. AIR REC.
SCALE: NONE
DRAWING NO: 306138

SPECIFICATIONS	
DD: 84	LEN: 355
WMP: 150 PS @ 400 T	SA: 8,000, SA 662.3
HC: 1000	WT: 12,500 / CWT: 1070
EMT: TEST	CODE: ASME SECTION VIII
DMY: 100	DESIGN: M-1937
WELD DETAILS: M-1937	EX. DATE: 02/05/82
STL. TOLERANCES: (UNLESS OTHERWISE NOTED): M-7481	

NOTES:
BREAK ALL EXPOSED INTERIOR NOZZLE EDGES
ALL FLANGE BOLT HOLES TO SQUARE WHEEL CENTERLINES

SYM	DATE	BY	APP	REF	REV
A					