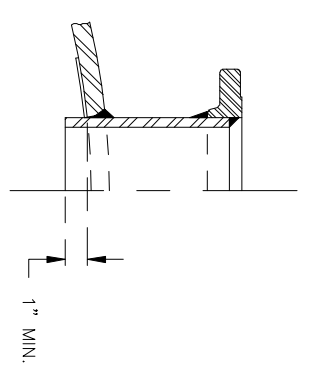
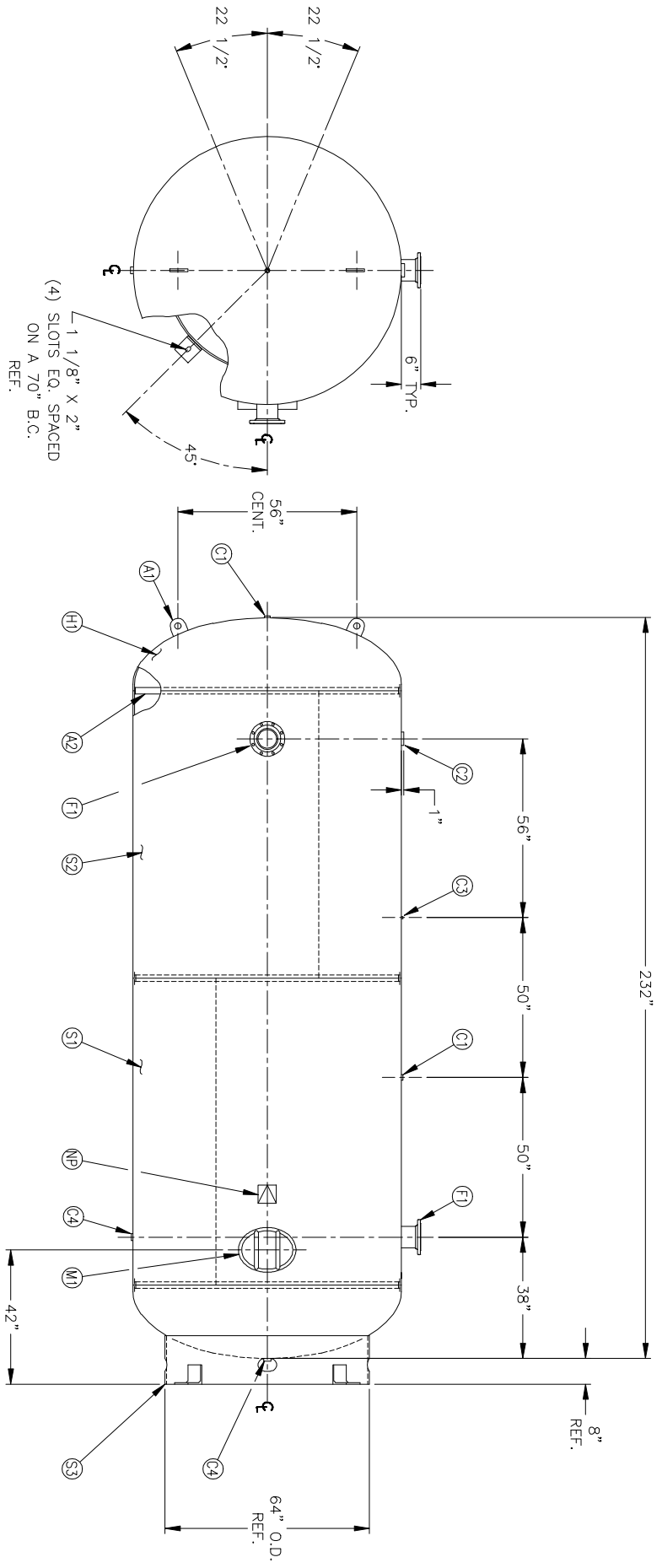


MANWAY DETAIL



6" NOZZLE DETAIL

NO. QTY.	DESCRIPTION	SPEC	SUB-DWG.
S1 1			
S2 1			
H1 2	.489 MIN. 84" O.D. 2:1 ELLIP. HEAD 2" S.F.	SA-516-70	
C1 2	1" NPT 3000# FULL COUPLING	SA-105	
C2 1	3" NPT 3000# HALF COUPLING	SA-105	
C3 1	1/4" NPT 3000# FULL COUPLING	SA-105	
C4 2	1 1/4" NPT 3000# HALF COUPLING	SA-105	
F1 2	6" 300# ANSI RF. SO. FLANGE	SA-105	
F1 2	6" S/XXH PIPE X 7 1/2" LONG	SA-106-B	
F1 2	1 3/4 X 8 5/8" O.D. X 6 5/8" I.D. BACKING RING	C1008	
M1 1	12" X 16" X 1" X 6" 300# MANWAY	SA-106-C	
S3 1	STANDARD 8" SKIRT ASSEMBLY FOR 84" DIA. TANK		
A1 2	1" X 6" X 6" STANDARD LIFT LUG		
A2 3	3/16" X 2" X 260 3/16" BACKING RING	C1010	
NP 1	ASWE DATA PLATE	C1010	



SYMBOL	DATE	BY	REVISION	APP	REF	REV	NOTES	SPECIFICATIONS	SCALE	DRAWING NO.

ALL FLANGE BOLT HOLES TO STRADDLE CENTER LINES
BREAK ALL EXPOSED INTERIOR NOZZLE EDGES



84" X 232" VERT.
STANDARD AIR RECEIVER

OD 84	LGTH 232	WMP 200	PSI @ 450 F	GAL 5000
RT- MDMT	T @	PSI	WT. 10800	
EXMT	TEST			
CRN N/A				

WELD DETAILS: M-1932	PER DATE OF DWG/LAST REV	SCALE: NONE
STD. TOLERANCES (UNLESS OTHERWISE NOTED): M-2461		DRAWING NO. 304718