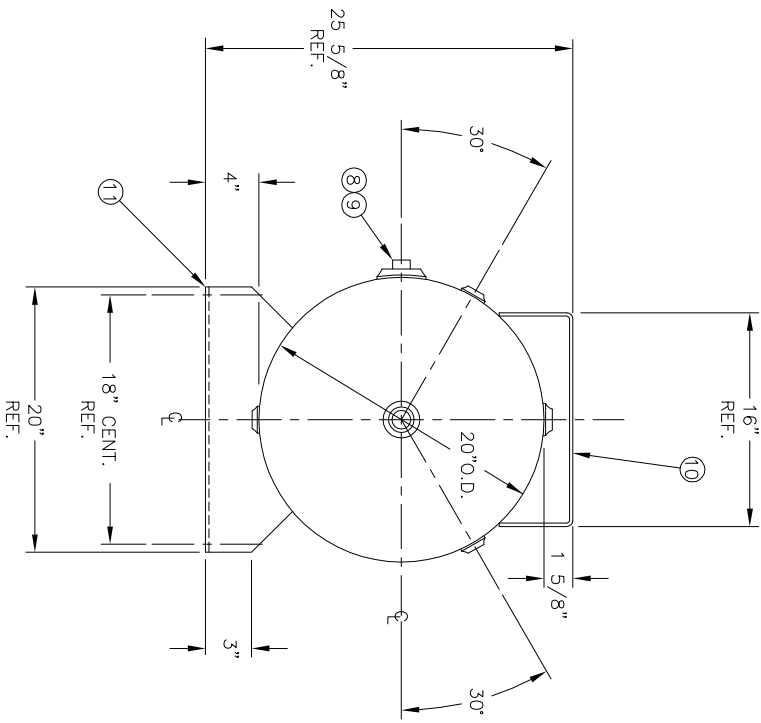
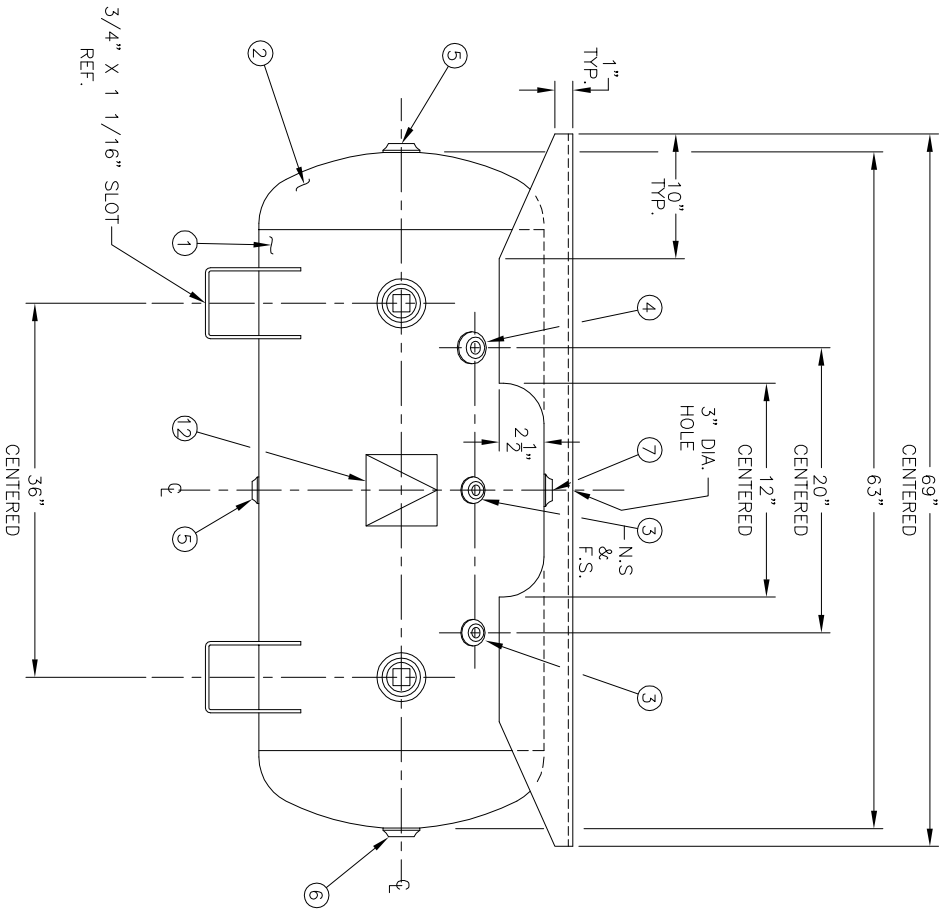


CODE/ADDENDA 2007/A08 APPROVED
 RELEASED FOR PRODUCTION
 Q.C. _____ DATE _____



NO. QTY.	DESCRIPTION	SPEC	SUB-DWG.
1 1		SA-414-G	
2 2		SA-414-G	
3 3	1/4"-NPT 1500# FLAT FLANGE	SA-181-70	
4 1	3/8"-NPT 1500# FLAT FLANGE	SA-181-70	
5 2	3/4"-NPT 1500# FLAT FLANGE	SA-181-70	
6 1	1 1/4"-NPT 1500# FLAT FLANGE	SA-181-70	
7 1	1 1/2"-NPT 1500# RADIAL FLANGE	SA-181-70	
8 2	2"-NPT 1500# RADIAL FLANGE	SA-181-70	
9 2	2"-NPS PLUG		
10 1	1/4" X 25 1/2" X 69" PLATFORM	C1010	
11 2	STANDARD SADDLE FOR 20" O.D. TANK		A84492
12 1	ASME DATA PLATE	C1010	

SWM	DATE	BY	REVISION	App	NOTES

SPECIFICATIONS

O.D. 20 LGTH. 63
 MAMP 200 PSI @ 650 °F

QAL. 80
 WT. 375

GRN. F0516.1C
 WELD DETAILS: M-1932
 STD. TOLERANCES (UNLESS OTHERWISE NOTED): M-2461

CODE: ASME SEC. VIII, DIV. 1
 LATEST EDITION & ADDENDA



80 GALLON
 STD. HORIZ. W/EXTENDED PLATFORM

DATE	SCALE:
	NONE
DRAWING NO.:	303977