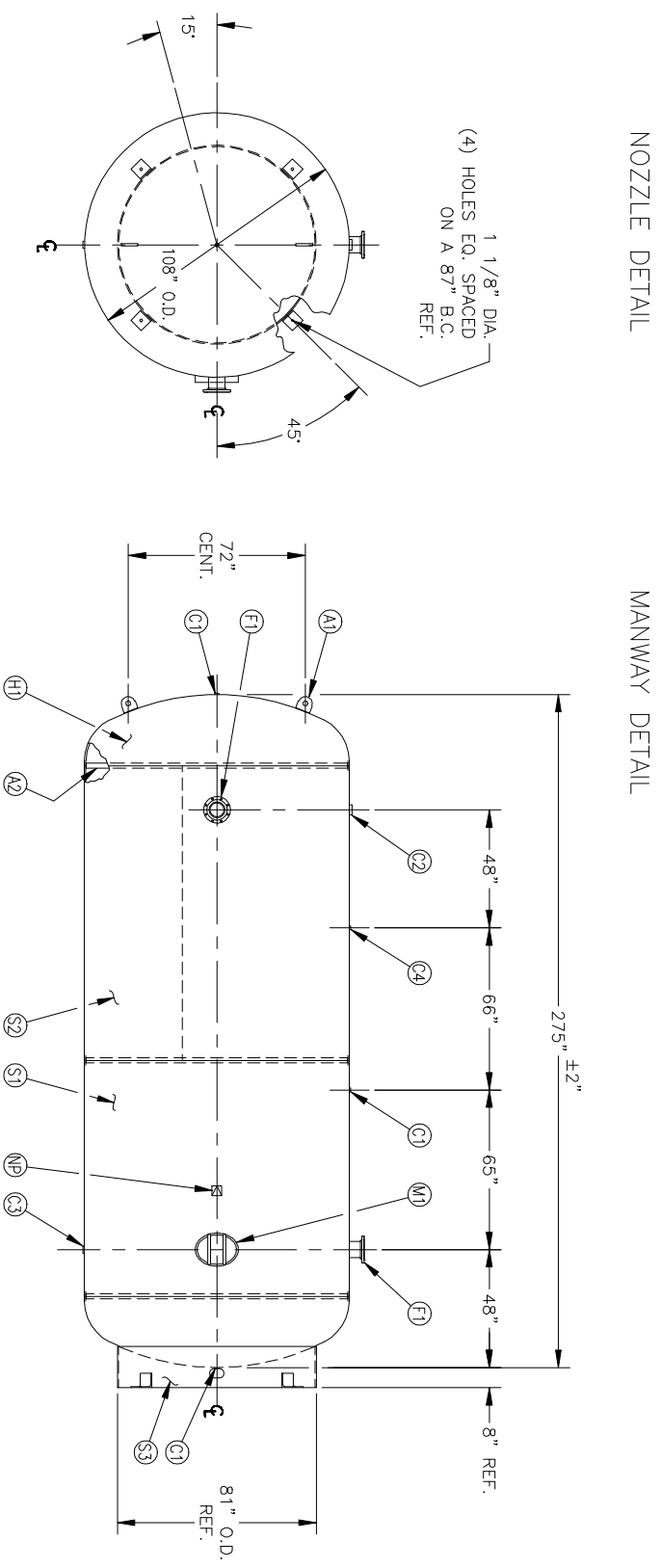
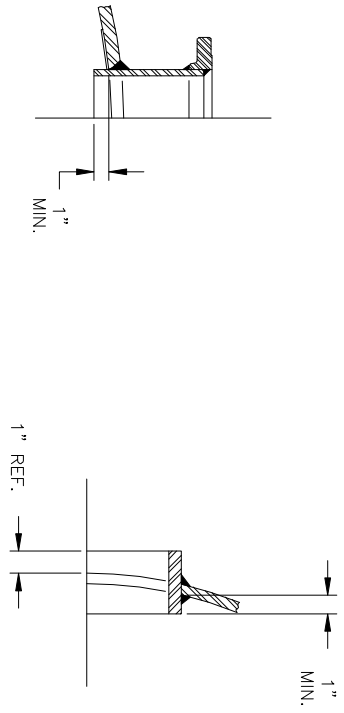


NO. QTY.	DESCRIPTION	SPEC	SUB-DWG.
S1 1			
S2 1			
H1 2			
F1 2	6" 150# ANSI REF. SO. FLANGE	SA-105	
F1 2	6" SCH. 80 PIPE X 8" LONG	SA-106-B	
F1 2	1.34 X 8 5/8" X 6 5/8" BACKING RING	C1008	
C1 3	1"-NPT 3000# FULL COUPLING	SA-105	
C2 1	3"-NPT 3000# FULL COUPLING	SA-105	
C3 1	2"-NPT 3000# HALF COUPLING	SA-105	
C4 1	1/4"-NPT 3000# T.O.E. COUPLING X 2 3/8" LONG	SA-105	
M1 1	12" X 16" X 3/4" X 4" 300# MANWAY	SA-675-70/SA-106-C	
S3 1	STANDARD 8" SKIRT & CLIP ASSY. FOR 108" DIA. TANK		
A1 2	1" X 6" X 6" STANDARD LIFT LUG		
A2 3	3/16" X 2" X 335 9/16" BACKING RING	C1008/SA-36	
NP 1	ASME DATA PLATE	C1010	



SYM	DATE	BY	REVISION	APP	XREF	REV	NOTES	SPECIFICATIONS	MANCHESTER TANK	DATE	SCALE:
							BREAK ALL EXPOSED INTERIOR NOZZLE EDGES ALL FLANGE BOLT HOLES TO STRADDLE VESSEL CENTERLINES	O.D. 108" LGTH 275" WAMP 137 P9 @ 450 F GAL. 10000 WT. 15700# CORR ALW — SH — HD CODE ASME SECT. VIII, DIV. 1 PER DATE OF DWG/LAST REV STD. TOLERANCES (UNLESS OTHERWISE NOTED): M-2461	MANCHESTER TANK STANDARD VERTICAL AIR RECEIVER O.A. 30000		NONE

DATE	BY	SCALE:
		NONE
		303970