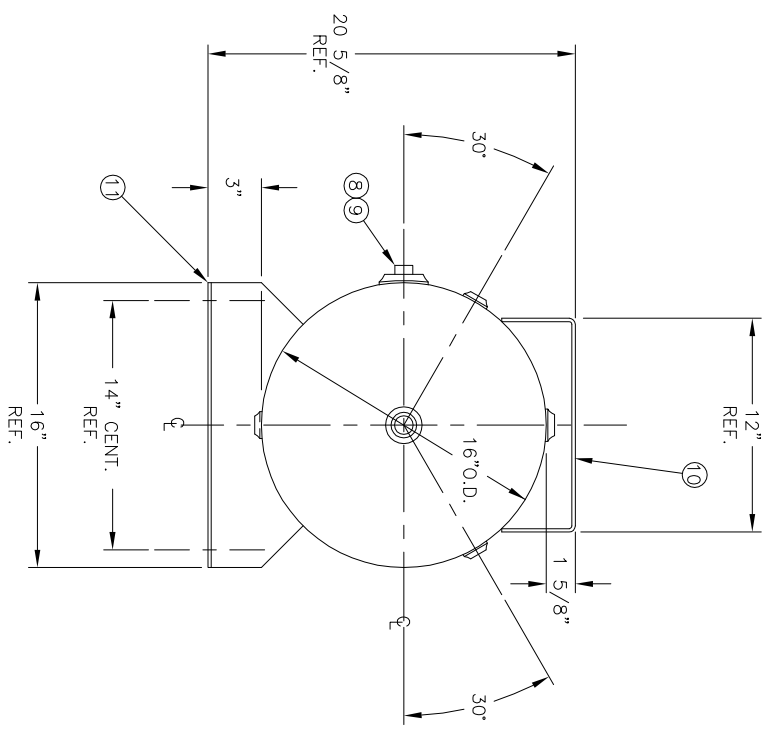
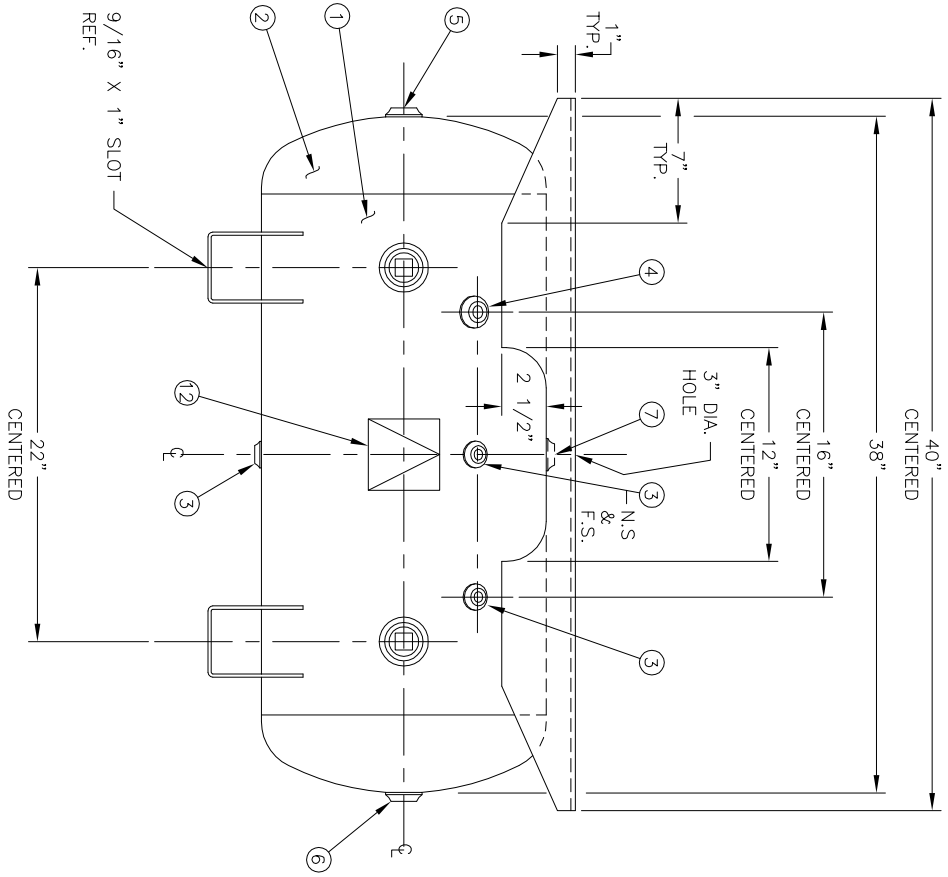


CODE/ADDENDA 2007/A08 APPROVED
 RELEASED FOR PRODUCTION
 Q.C. _____ DATE _____



NO. QTY.	DESCRIPTION	SPEC	SUB-DWG.
1	1		
2	2		
3	4 1/4"-NPT 1500# FLAT FLANGE	SA-181-70	
4	1 3/8"-NPT 1500# FLAT FLANGE	SA-181-70	
5	1 1/2"-NPT 1500# FLAT FLANGE	SA-181-70	
6	1 3/4"-NPT 1500# FLAT FLANGE	SA-181-70	
7	1 3/4"-NPT 1500# RADIAL FLANGE	SA-181-70	
8	2 1 1/2"-NPT 1500# RADIAL FLANGE	SA-181-70	
9	2 1 1/2"-NPS PLUG		
10	1 3/16" X 19 1/2" X 40" PLATFORM		
11	2 STANDARD SADDLE FOR 16" O.D. TANK		
12	1 ASME DATA PLATE	C1010	

SWM	DATE	BY	REVISION	App	NOTES	SPECIFICATIONS
						O.D. 16 LGTH. 38 MAMP 200 PSI @ 650 °F RT-NO MDMT -20 °F @ 200 PSI GRN. F2151.1C WELD DETAILS: M-1932 STD. TOLERANCES (UNLESS OTHERWISE NOTED): M-2461 CODE: ASME SEC. VIII DIV. 1 LATEST EDITION & ADDENDA WT. 117# QAL. 30



30 GALLON
 STD. HORIZ. W/EXTENDED PLATFORM

DRAWN BY	DATE	SCALE: NONE
APP. BY	DATE	DRAWING NO. 302686