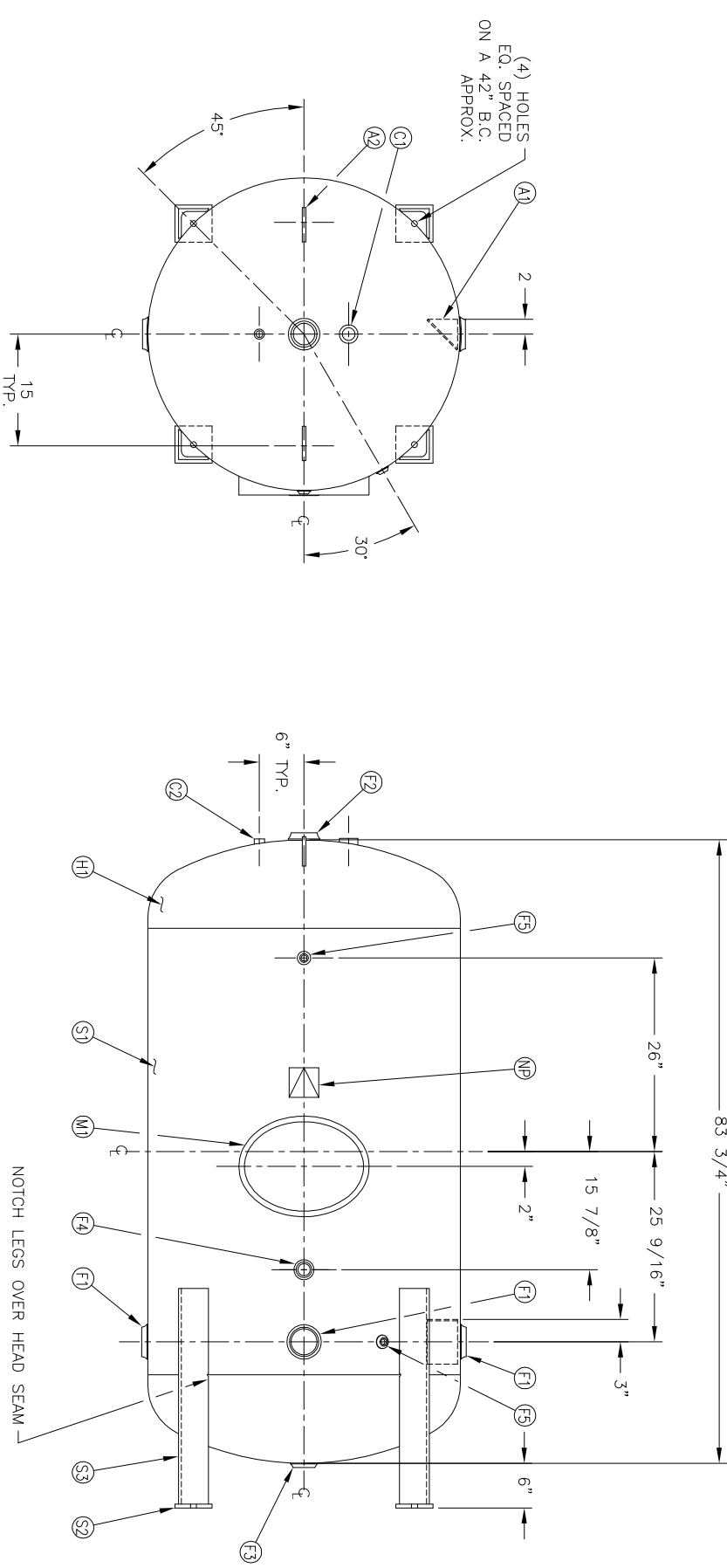


LEG/PAD DETAIL

MANWAY DETAIL

NO. QTY	DESCRIPTION	SPEC	SUB-DWG.
S1 1			
H1 2			
M1 1	12" X 16" X 3/4" X 4" 300# MANWAY	SA-106-C	
F1 3	3"-NPT 1500# RADIAL FLANGE	SA-181-70	
F2 1	3"-NPT 1500# FLAT FLANGE	SA-181-70	
F3 1	2"-NPT 1500# FLAT FLANGE	SA-181-70	
C1 1	1 1/2"-NPT 3000# FULL COUPLING	SA-105	
F4 1	1 1/4"-NPT 1500# RADIAL FLANGE	SA-181-70	
C2 1	3/4"-NPT 3000# FULL COUPLING	SA-105	
F5 2	1/2"-NPT 1500# FLAT FLANGE	SA-181-70	
A1 1	BAFLE	A84451	
A2 2	1/2" X 4" X 4" STANDARD LIFT LUG	SA-516-70	A84386
S2 4	1/2" X 5" X 5" PAD	SA-516-70	
S3 4	3/8" X 4" X 4" ANGLE LEG X 29" LONG	SA-36	
NP 1	ASME DATA PLATE	C1010	



NOTES

1. 1/8" RADIUS ALL EDGES.
2. GRIND ALL INTERNAL WELDS SMOOTH.
3. SANDBLAST TO NEAR WHITE FINISH.
4. ALL VOIDS AND GAPS TO BE CAULKED
5. COAT WITH DEVCO 233H EPOXY (OR EQUIV.)

INTERIOR FINISH NOTE

ALL OPEN TAPS TO HAVE PLASTIC THREAD PROTECTORS

DATE	BY	REVISION	APP	REF	REV

MANCHESTER TANK Q: 3000

VERTICAL EPOXY LINED WATER TANK

SCALE: NONE
DRAWING NO: 302519

CODE ASME SECT. VIII, DIV. 1
PER DATE OF DWG/LAST REV

WELD DETAILS: M-1932
STD. TOLERANCES (UNLESS OTHERWISE NOTED): M-2461

CGN ---

0.0.42 LGH. 83.75
MAMP 150 PSI @ 250 F

QAL 450 SA
WT. 1110# CUFT.