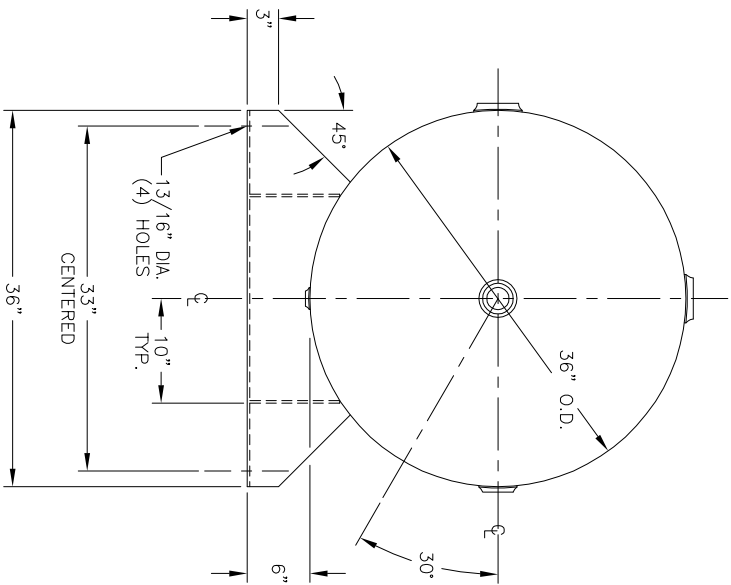
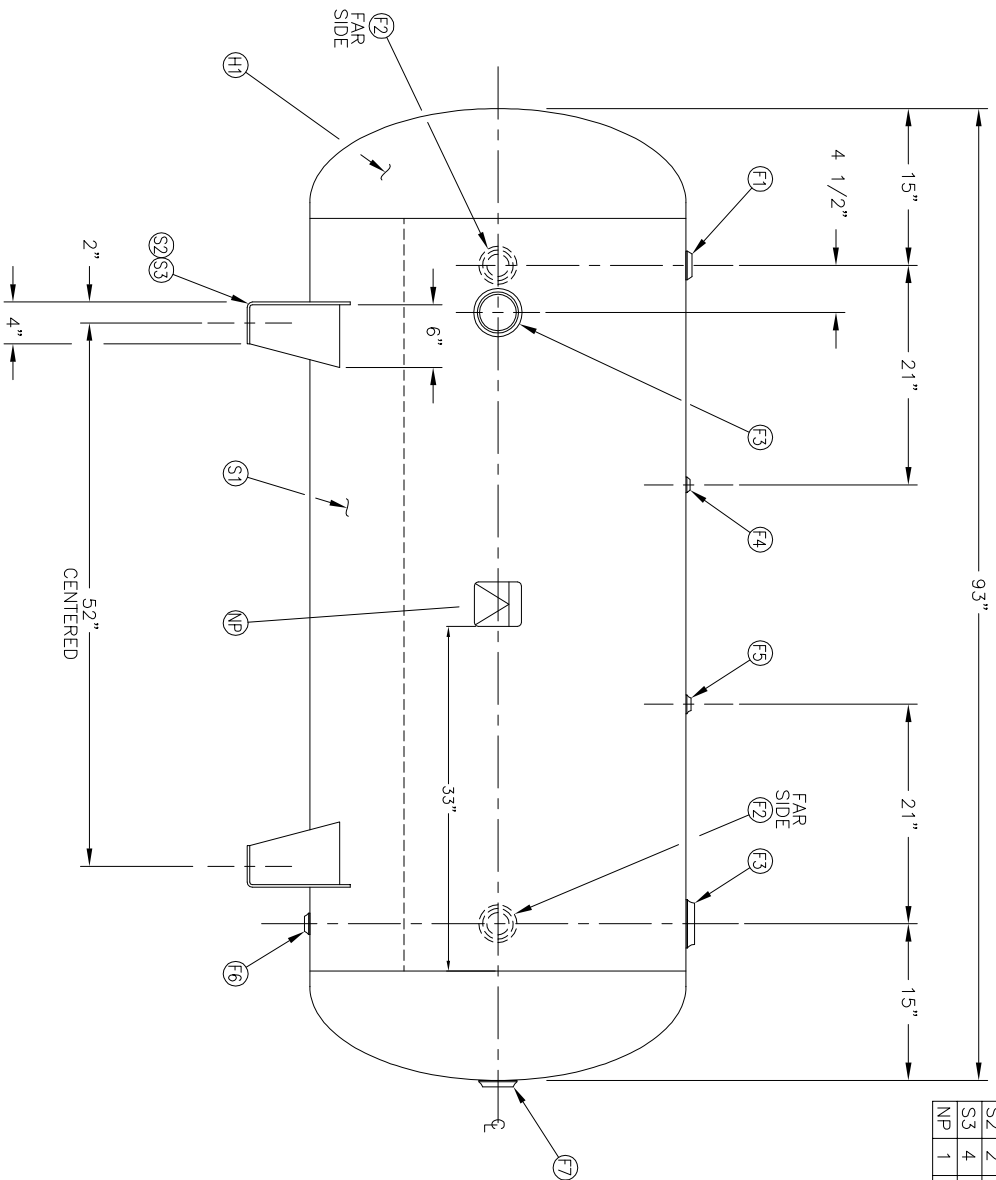


NO. QTY	DESCRIPTION	SPEC	SUB-DWG.
S1 1			
H1 2			
F1 1	1 1/2"-NPT 1500# RADIAL FLANGE	SA-181-70	
F2 2	2"-NPT 1500# RADIAL FLANGE	SA-181-70	
F3 2	3"-NPT 1500# RADIAL FLANGE	SA-181-70	
F4 1	1/4"-NPT 1500# FLAT FLANGE	SA-181-70	
F5 1	1/2"-NPT 1500# FLAT FLANGE	SA-181-70	
F6 1	3/4"-NPT 1500# RADIAL FLANGE	SA-181-70	
F7 1	2"-NPT 1500# FLAT FLANGE	SA-181-70	
S2 2	1/4" X 13 1/2" X 36" SADDLE	C1008	
S3 4	3/16" X 6" X 8 5/8" GUSSET	C1010	
NP 1	ASME DATA PLATE	C1010	



SWM	DATE	BY	REVISION	APP	XREF	REV	NOTES

SPECIFICATIONS

O.D. 36 LGTH. 93  
 MAMP 137 PSI @ 450 F

QAL 400 SA

WT. 670# CUFT.

CORR ALW SH HD

CODE ASME SECT.VIII, DIV.1

PER DATE OF DWG/LAST REV

WELD DETAILS: M-1932

STD. TOLERANCES (UNLESS OTHERWISE NOTED): M-2461



Q:\3000

36" X 93"

STANDARD AIR RECEIVER

DRAWN BY

DATE

SCALE: NONE

APP. BY

DATE

DRAWING NO. 302486