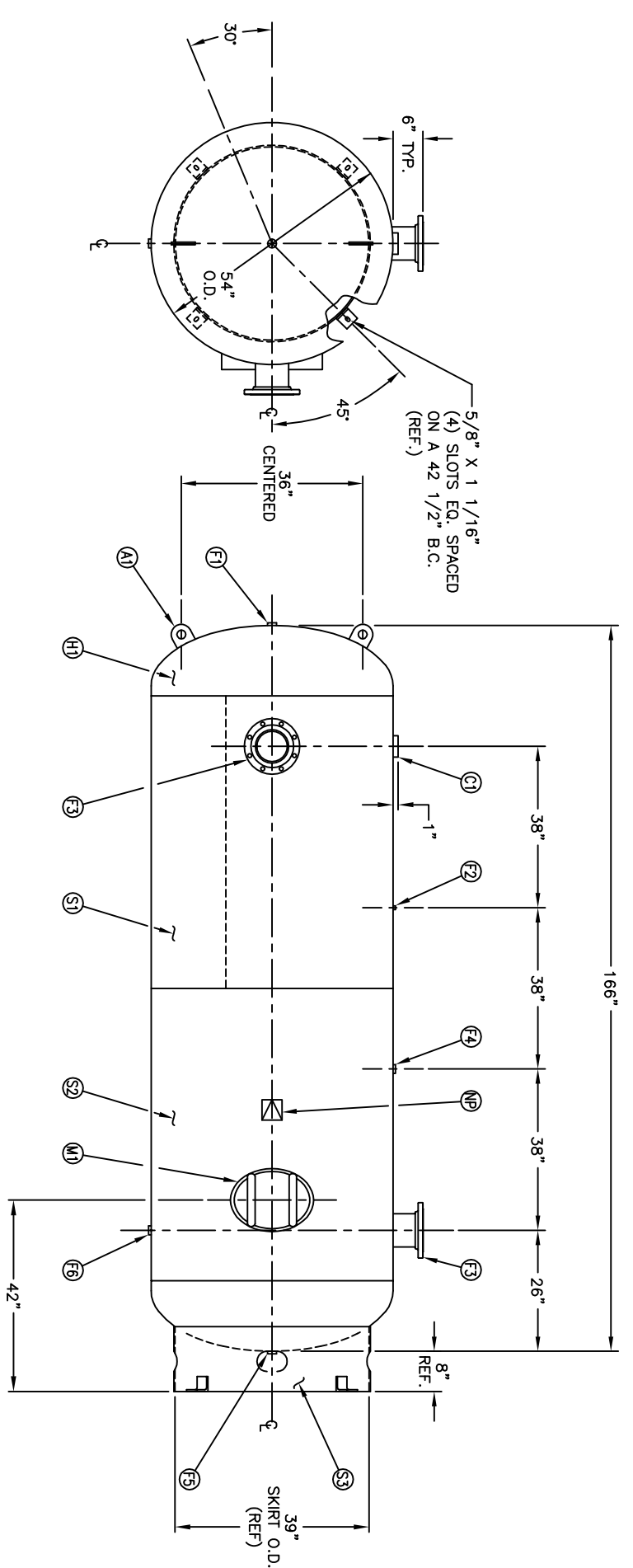


NOZZLE DETAIL

MANWAY DETAIL

NO. QTY	DESCRIPTION	SPEC	SUB-DWG.
S1 1			
S2 1			
H1 2		SA-516-70	
C1 1	3 NPT 3000# HALF COUPLING	SA-105	
F1 1	1 NPT 1500# FLAT FLANGE	SA-181-70	
F2 1	1/4 NPT 1500# FLAT FLANGE	SA-181-70	
F3 2	6" 150# ANSI REF. SO. FLANGE	SA-105	
F3 2	6" SCH.80 PIPE X 7 1/2" LONG	SA-106-C	
F3 2	.134 X 8 5/8" O.D. X 6 5/8" I.D. BACKING RING	C1008/SA-36	
F4 1	1.1/4 NPT 1500# RADIAL FLANGE	SA-181-70	
F5 1	1.1/4 NPT 1500# FLAT FLANGE	SA-181-70	
F6 1	1.1/4 NPT 1500# RADIAL FLANGE	SA-181-70	
M1 1	12" X 16" X 1" X 6" 300# MANWAY	SA-675-70/SA-106-C	
A1 2	3/4" X 5" X 5" STANDARD LIFT LUG		AB4524
S3 1	STANDARD 8" SKIRT& CLIP ASSY. FOR 54" DIA. TANK		AB5008
NP 1	ASME DATA PLATE		



REV	DATE	BY	REVISION	APP	DATE	REV	NOTES

**SPECIFICATIONS**

O.D. 54"	LGTH. 166"
MAWP 165 PSI @ 400 F	
COR. N/A	
WELD DETAILS: M-1932	
STD. TOLERANCES (UNLESS OTHERWISE NOTED): M-2461	

**MANCHESTER**

54" X 166" VERT. STANDARD AIR RECEIVER

Q:\3000

QUAL. 1550	W.T. 2600#	CODE ASME SECT.VIII, DIV.1	PER DATE OF DWG/LAST REV
DRAWN BY	DATE	SCALE: NONE	DRAWING NO. 302446