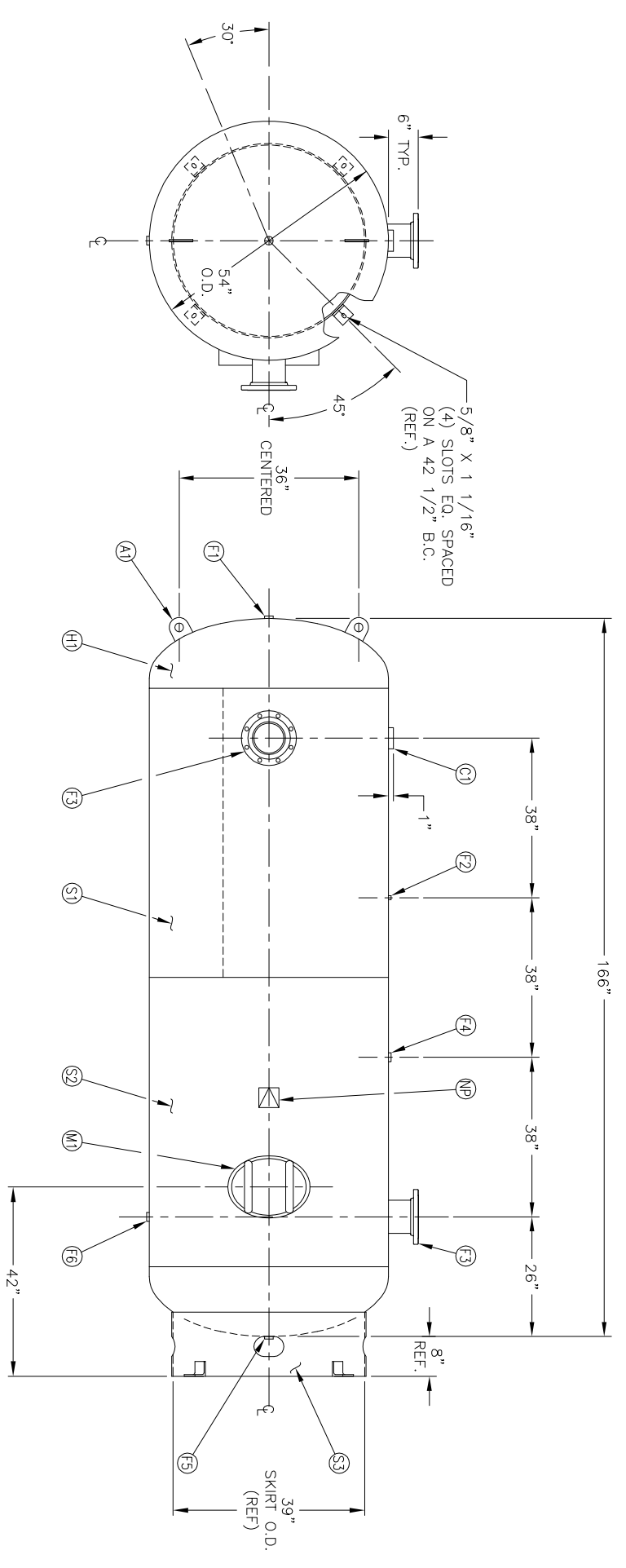


NOZZLE DETAIL

MANWAY DETAIL

NO. QTY	DESCRIPTION	SPEC	SUB-DWG.
S1 1			
S2 1			
H1 2	3"-NPT 3000# HALF COUPLING	SA-516-70	
C1 1	1"-NPT 1500# FLAT FLANGE	SA-105	
F1 1	1/4"-NPT 1500# FLAT FLANGE	SA-181-70	
F2 1	1/4"-NPT 1500# FLAT FLANGE	SA-181-70	
F3 2	6" 150# ANSI RF. SO. FLANGE	SA-105	
F3 2	6" SCH.80 PIPE X 7 1/2" LONG	SA-106-B	
F3 2	1.34 X 8 5/8" O.D. X 6 5/8" I.D. BACKING RING	SA-36	
F4 1	1"-NPT 1500# RADIAL FLANGE	SA-181-70	
F5 1	1 1/4"-NPT 1500# FLAT FLANGE	SA-181-70	
F6 1	1 1/4"-NPT 1500# RADIAL FLANGE	SA-181-70	
M1 1	12" X 16" X 3/4" X 4" 300# MANWAY	SA-106-C	
A1 2	3/4" X 5" X 5" STANDARD LIFT LUG	A84524	
S3 1	STANDARD 8" SKIRT& CLIP ASSY. FOR 54" DIA. TANK	A85008	
NP 1	ASME DATA PLATE	C1010	



SM/DATE BY	REVISION	APP XREF REV	NOTES	SPECIFICATIONS
				O.D. 54 LGH. 166 MAMP 150 PSI @ 450 F CRN. M0280.54236 WELD DETAILS: M-1932 STD. TOLERANCES (UNLESS OTHERWISE NOTED): M-2461 GAL. 1550 WT. 2600# CODE ASME SEC. VIII DIV. 1 PER DATE OF DWG/LAST REV



54" X 166" VERT.
STANDARD AIR RECEIVER

SCALE: NONE	DRAWING NO. 302445
DATE	DATE
APP. BY	DATE