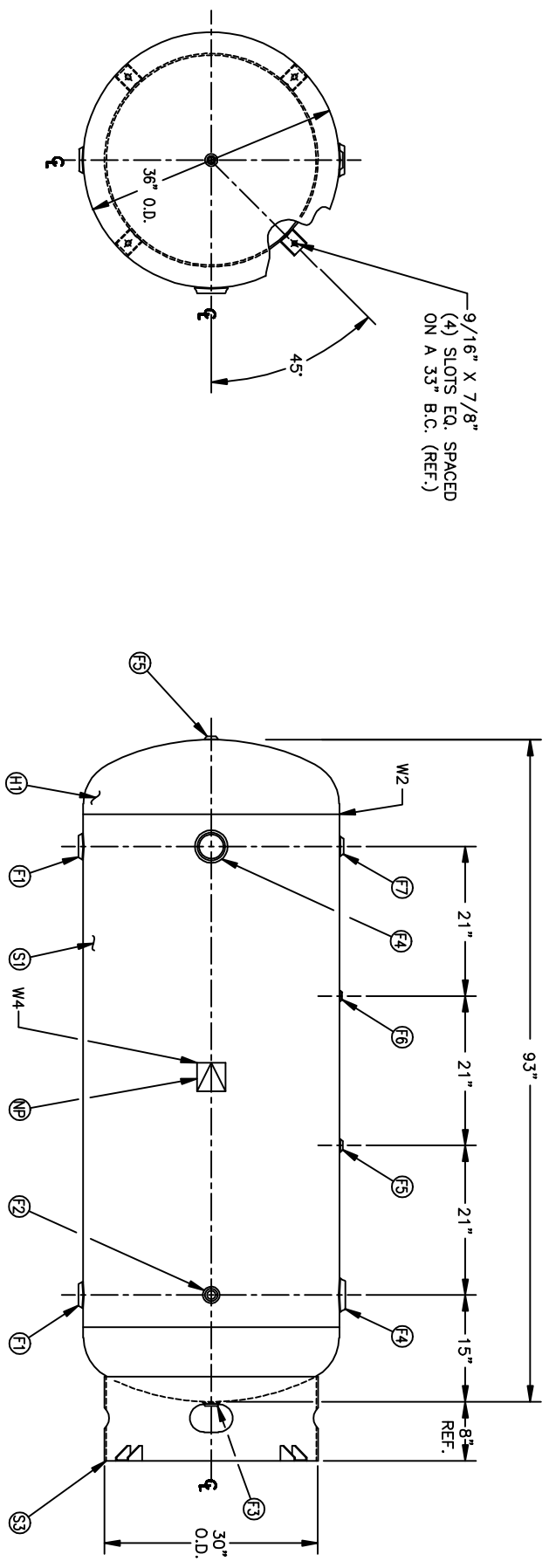


FIND NO.	NPT SIZE
F1	2
F2	1
F3	1
F4	3
F5	1/2
F6	1/4
F7	1 1/2



DATE	BY	REVISION	APP	REF	REV	NOTES

SPECIFICATIONS	
O.D. 36	LENH. 93
MAWP 200	PSI @ 450 °F
CRN 1.8908.5C	
WELD DETAILS: M-1932	
STD. TOLERANCES (UNLESS OTHERWISE NOTED): M-2461	

DRAWN BY		DATE		SCALE: NONE	

DRAWING NO.	
302433	



36" X 93" VERT.  
STANDARD AIR RECEIVER

Q.A. 3000