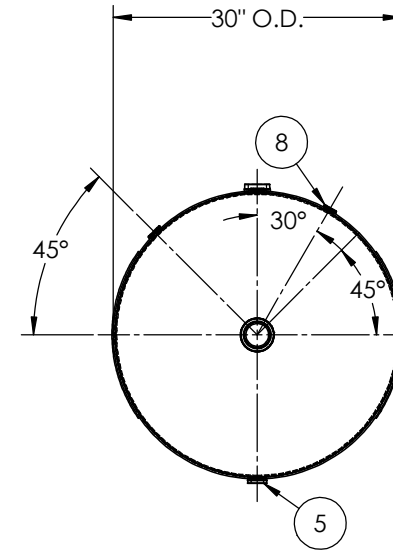
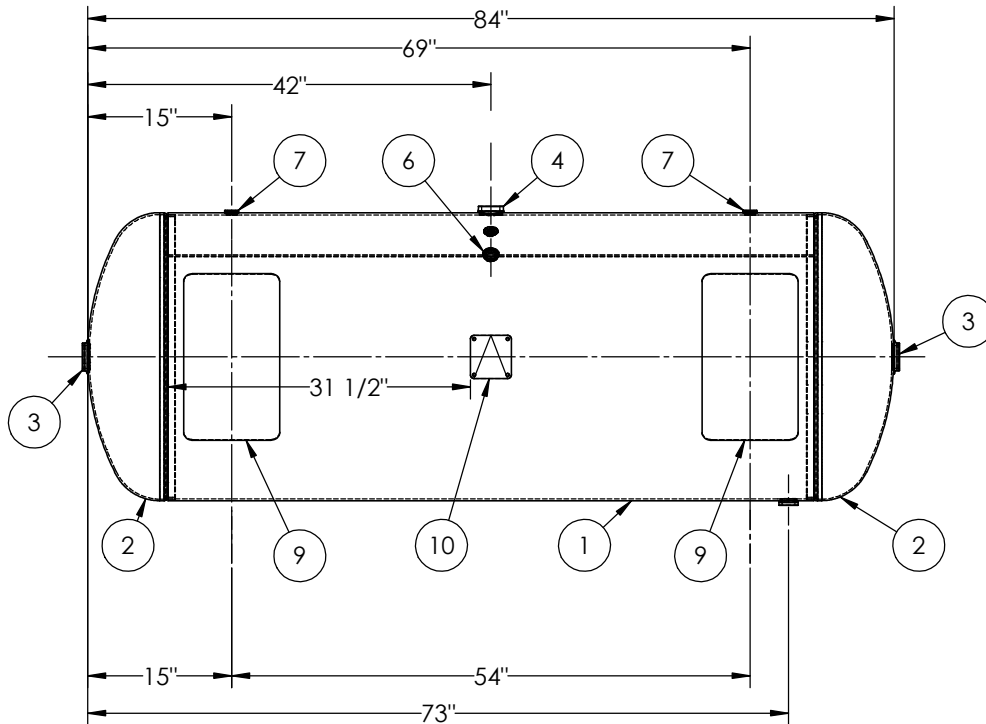


ITEM NO.	PART NO.	DESCRIPTION	QTY.
1	302652-SL	SHELL LAYOUT FOR 30" TANK	1
2	H32041	.186 MIN. 30" O.D. 2:1 ELLIP. JOG. HEAD	2
3	F10440	2"-NPT FLAT FLANGE	2
4	F30317	1 1/2"-NPT RADIAL FLANGE O-RING	1
5	F30263	1"-NPT RADIAL FLANGE	1
6	F31840	3/4"-NPT FLAT FLANGE	1
7	F10250	1/2"-NPT FLAT FLANGE	2
8	F33310	1/8"-NPT FLAT FLANGE	1
9	A99437	10GA PAD	4
10	A20910	ASME DATA PLATE	1
11	A97723	LEG ASY	2



SHEET 1 OF 2

NOTES:

SPECIFICATIONS

O.D. 30 LGTH. 84
 WT. 849 LBS.
 S.A. 57.8 SQ.FT.
 GAL. 240 CU.FT.31.3 CRN: F0628.1C
 CODE: ASME Section VIII, Div.1 LATEST EDITION
 STD. TOLERANCES: M-2461 (UNLESS OTHERWISE NOTED)

MAWP 200 PSI @ 400°F

W
 EXMT UG-20(f) CORR ALW 0 SH 0 HD
 WELD DETAILS: M-1932



HORIZONTAL AIR RECEIVER

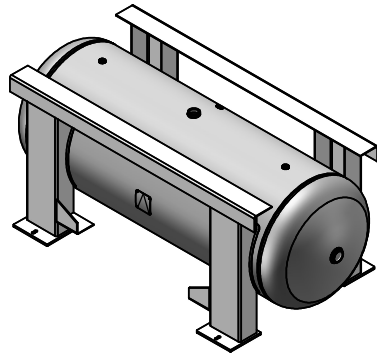
REVISIONS

REV.	BY	DESCRIPTION	DATE	APP.
A	JR			JR
B	KAT			JC
C	MK			MK
D	RK			MK

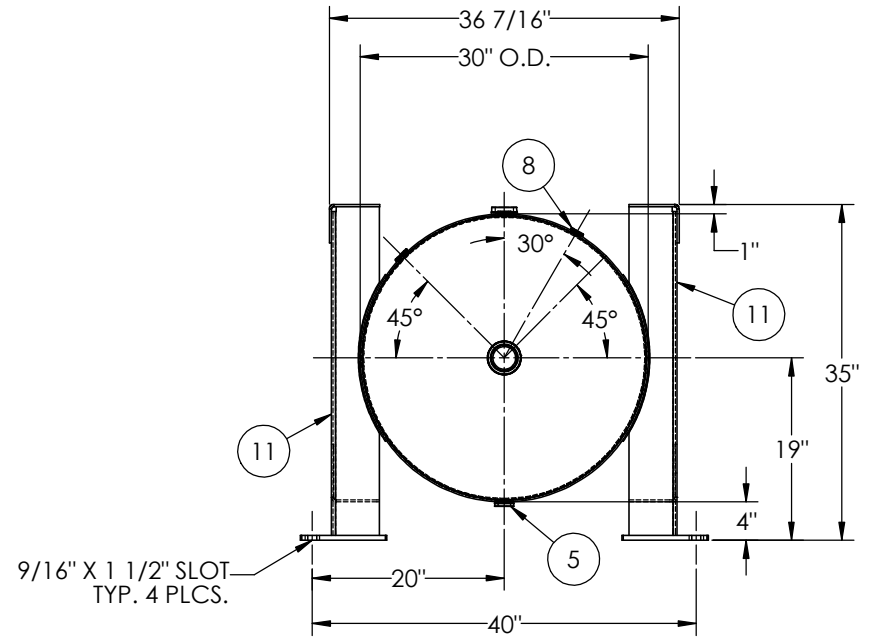
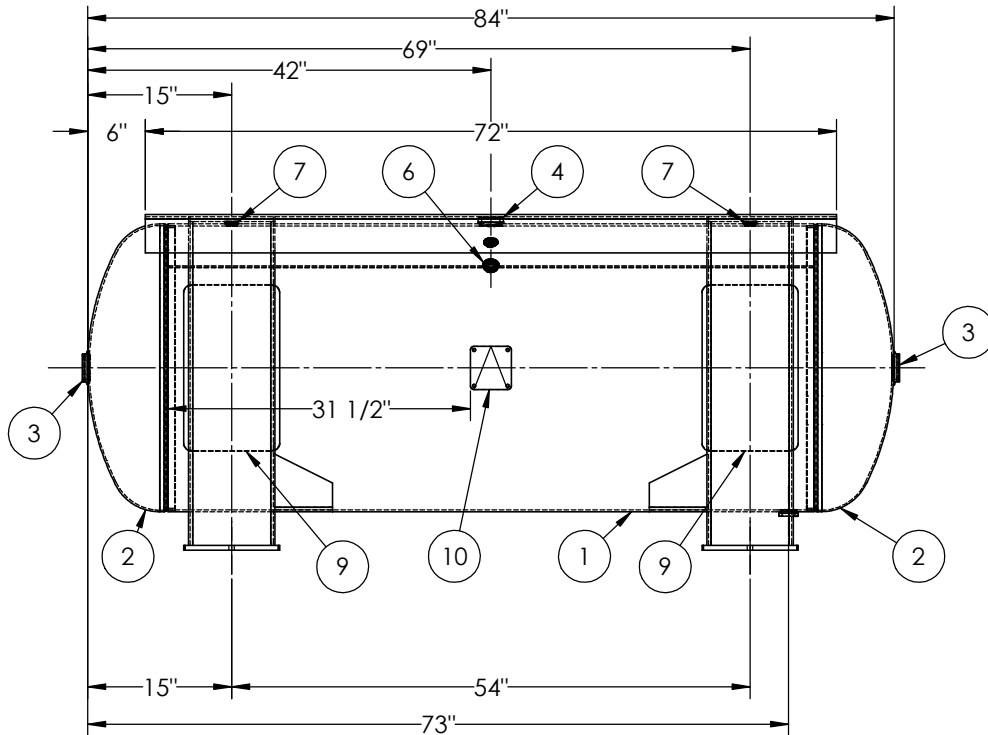
DRAWN BY:	JR	DATE:	
APPR. BY:	MK	DATE:	
SCALE:	NONE	DRWG NO.	302652

RELEASED FOR PRODUCTION

Q.C. _____ DATE _____



ITEM NO.	PART NO.	DESCRIPTION	QTY.
1	302652-SL	SHELL LAYOUT FOR 30" TANK	1
2	H32041	.186 MIN. 30" O.D. 2:1 ELLIP. JOG. HEAD	2
3	F10440	2"-NPT FLAT FLANGE	2
4	F30317	1 1/2"-NPT RADIAL FLANGE O-RING	1
5	F30263	1"-NPT RADIAL FLANGE	1
6	F31840	3/4"-NPT FLAT FLANGE	1
7	F10250	1/2"-NPT FLAT FLANGE	2
8	F33310	1/8"-NPT FLAT FLANGE	1
9	A99437	10GA PAD	4
10	A20910	ASME DATA PLATE	1
11	A97723	LEG ASY	2



SHEET 2 OF 2

NOTES:

SPECIFICATIONS

O.D. 30 LGTH. 84 MAWP 200 PSI @ 400°F
 WT. 849 LBS.
 S.A. 57.8 SQ.FT.
 GAL. 240 CU.FT.31.3 CRN: F0628.1C
 CODE: ASME Section VIII, Div.1 LATEST EDITION
 STD. TOLERANCES: M-2461 (UNLESS OTHERWISE NOTED)

EXMT UG-20(f) CORR ALW 0 SH 0 HD
 WELD DETAILS: M-1932



HORIZONTAL AIR RECEIVER

REVISIONS

REV.	BY	DESCRIPTION	DATE	APP.
A	JR			JR
B	KAT			JC
C	MK			MK
D	RK			MK

DRAWN BY:	JR	DATE:	
APPR. BY:	MK	DATE:	
SCALE:	NONE	DRWG NO.	302652

RELEASED FOR PRODUCTION
 Q.C. _____ DATE _____

