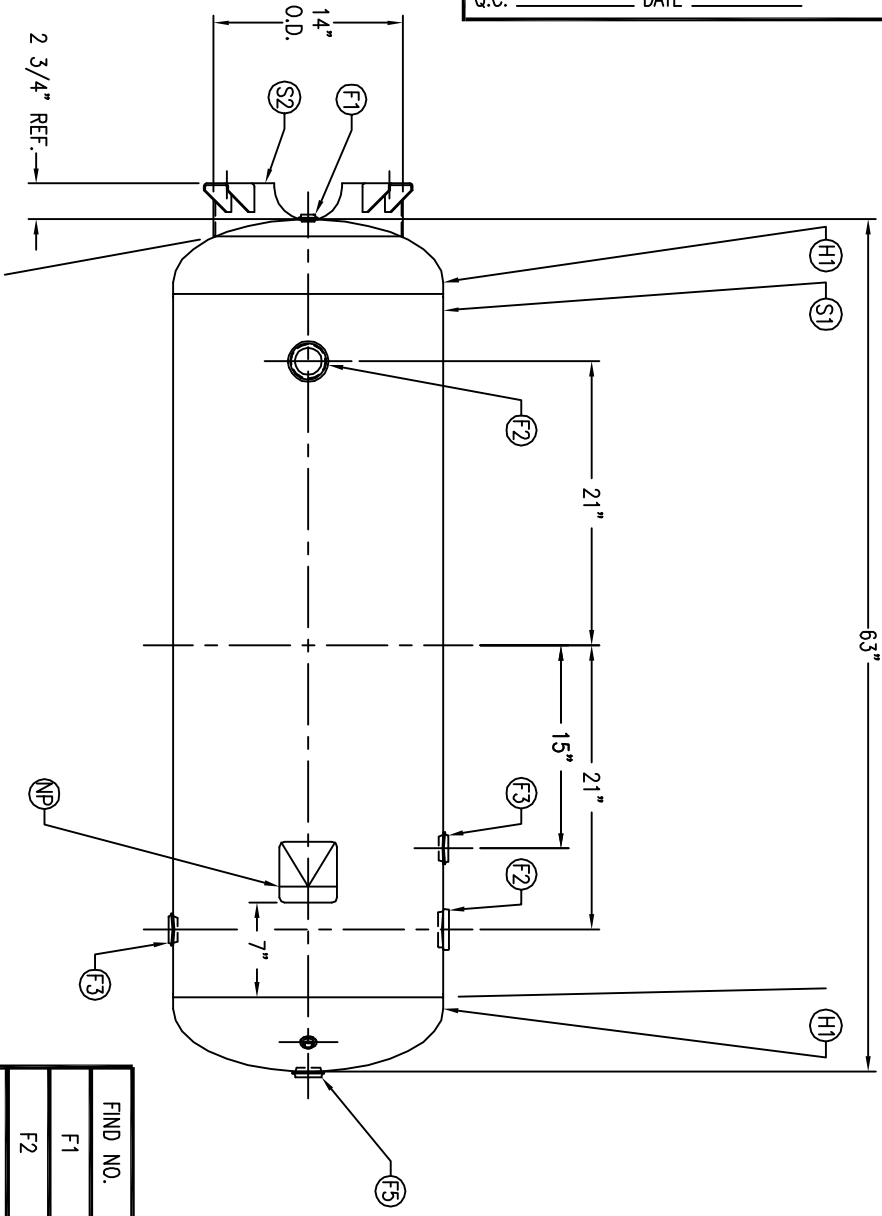
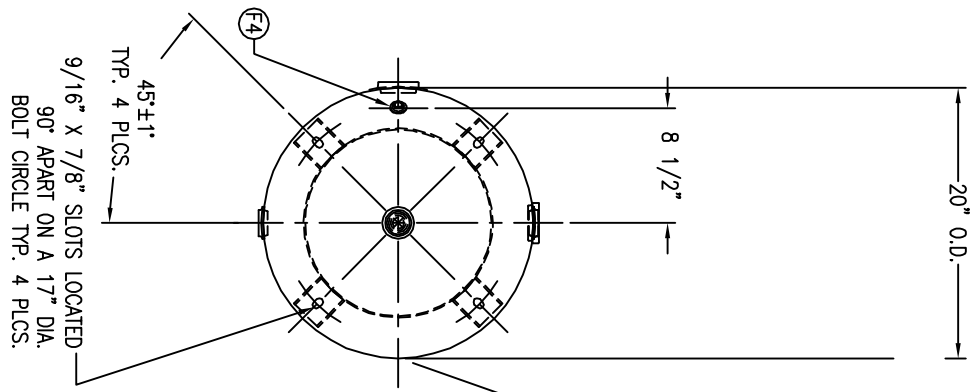


CODE/ADDENDA APPROVED
 RELEASED FOR PRODUCTION
 Q.C. _____ DATE _____



FIND NO.	NPT SIZE
F1	1/2
F2	2
F3	1-1/4
F4	1/4
F5	1-1/4



REVISION

APP XREF REV.

NOTES

SPECIFICATIONS

VERTICAL AIR RECEIVER



bed \ vme \ 302

SYM	DATE	BY	REVISION
A		EGB	
B		TA	

APP	XREF	REV.
	C1006 B	
	C1007 A	

NOTES

SPECIFICATIONS

VERTICAL AIR RECEIVER



bed \ vme \ 302

O.D. 20 LGTH. 63 SH. MAT'L
 MAMP 300 PSI @ 650 F HD. MAT'L
 RT - MDMT T@ PSI S.A. 28.8
 EXMT TEST W WT. 268# CU.FT. 10.3
 XRAY CRN F1164.1C CORR ALW SH HD
 CODE: ASME SEC. VIII DIV. I, LATEST EDITION & ADDENDA

WELD DETAILS: M-1932
 STD. TOLERANCES (UNLESS OTHERWISE NOTED): M-2461

DRAWN BY DATE SCALE: NONE
 EGB DATE DRAWING NO.
 JR 302415