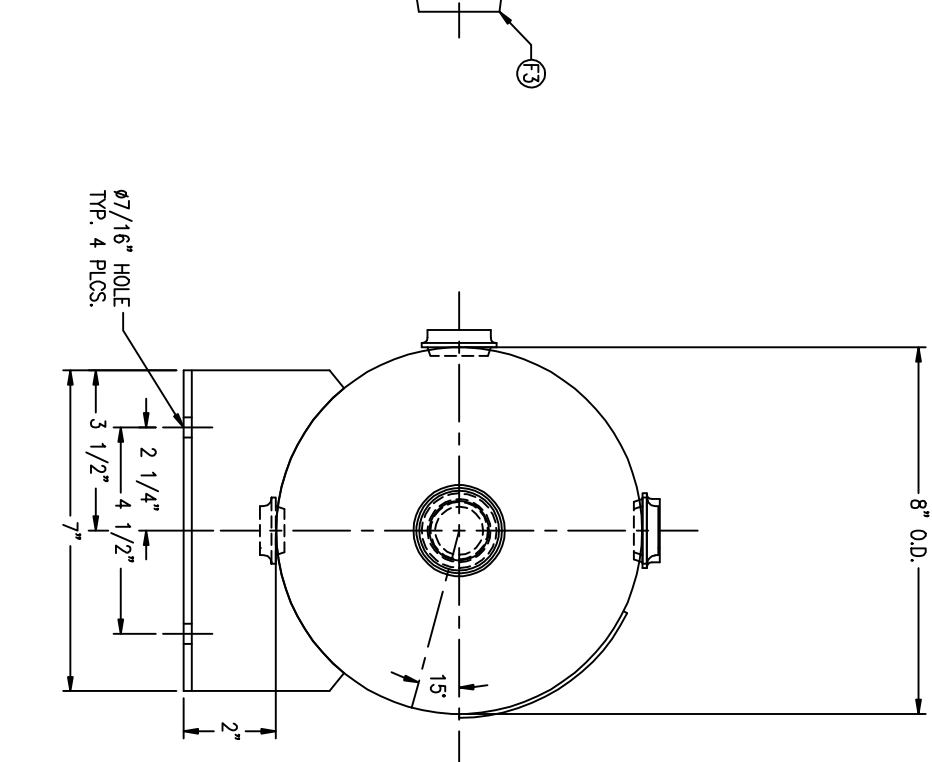
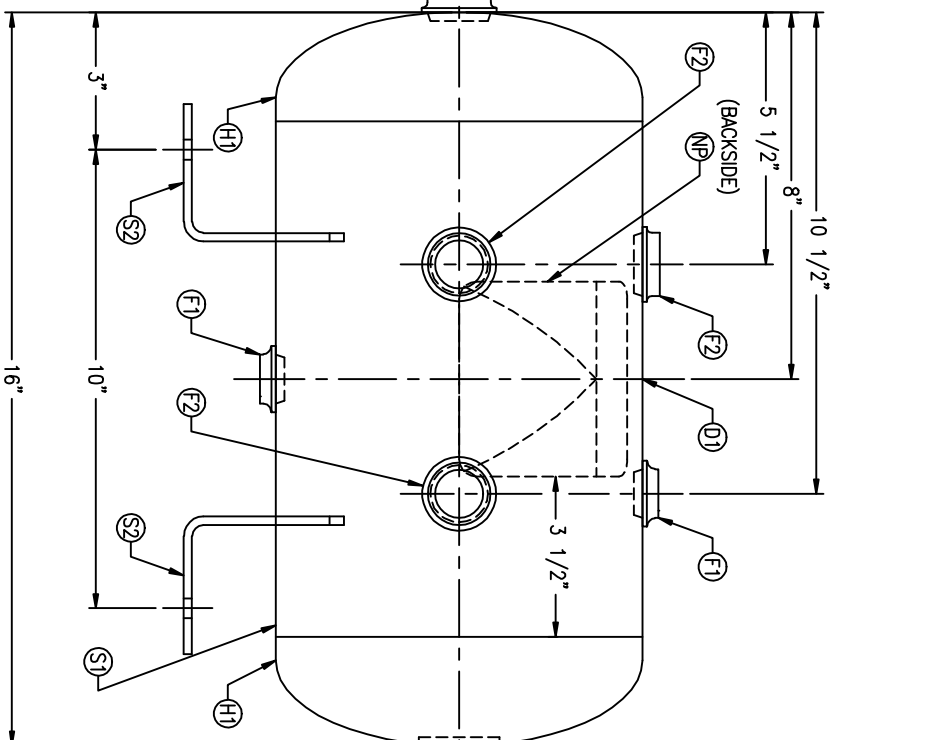


CODE/ADDENDA 2004/2006 APPROVED KM  
 RELEASED FOR PRODUCTION  
 Q.C. \_\_\_\_\_ DATE \_\_\_\_\_

FIND NO.	NPT SIZE
F1	1/2
F2	3/4
F3	1



NOTES  
 1. ALL PLUGS TO BE LOOSENED TO HAND TIGHT PLUS ONE HALF TURN PRIOR TO SHIPMENT.

SYMBOL	DATE	BY	REVISION

APP	XREF	REV

SPECIFICATIONS

O.D. 8 LGTH. 16  
 MAMP 200 PSI @ 650 F  
 W

GAL. 3.0 S.A. 3.0  
 WT. 19# CULFT. .40  
 CODE: ASME SEC. VIII DIV. 1  
 LATEST EDITION & ADDENDA

CRN H9635.5123467890  
 WELD DETAILS: M-1932  
 STD. TOLERANCES (UNLESS OTHERWISE NOTED): M-2461



HORIZONTAL AIR RECEIVER

DATE	SCALE: NONE
DATE	DRAWING NO. 304982
APP. BY	