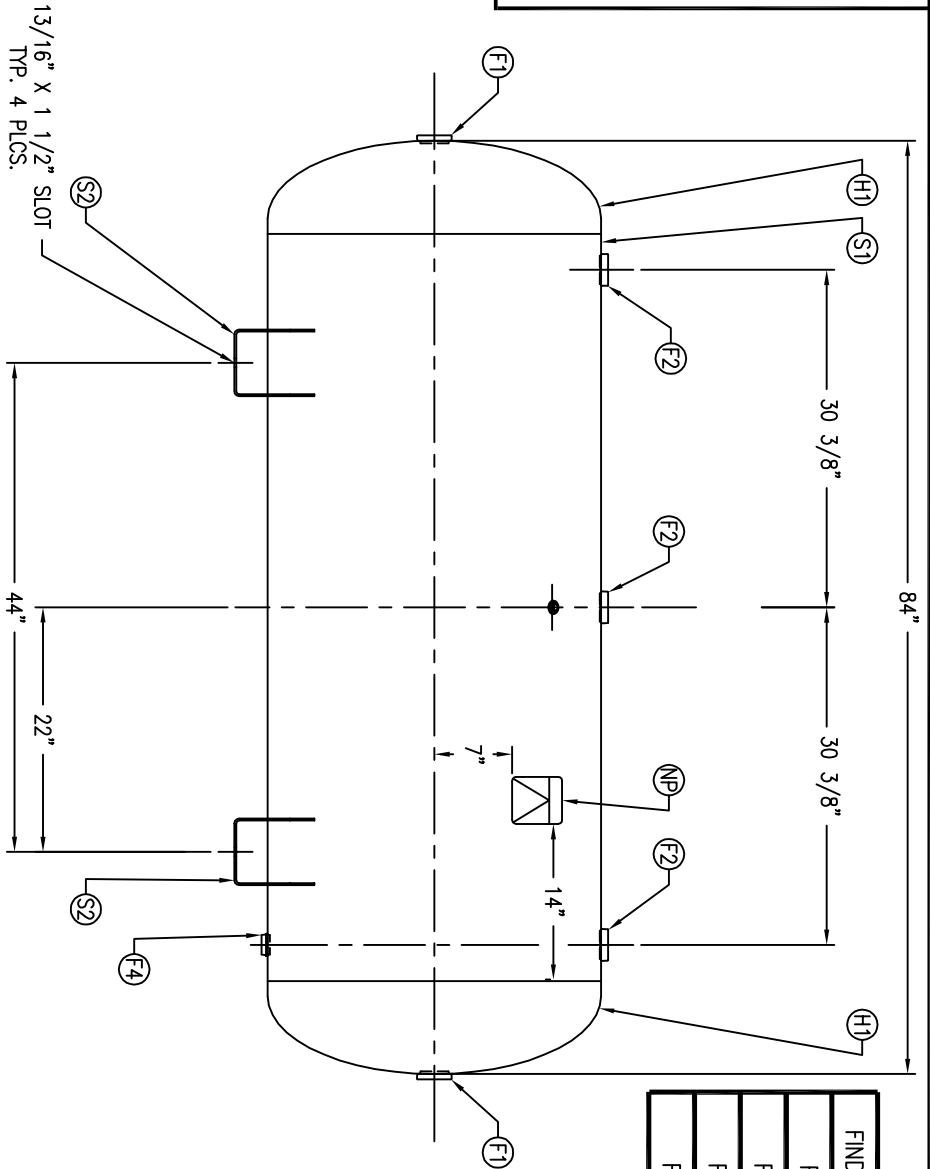
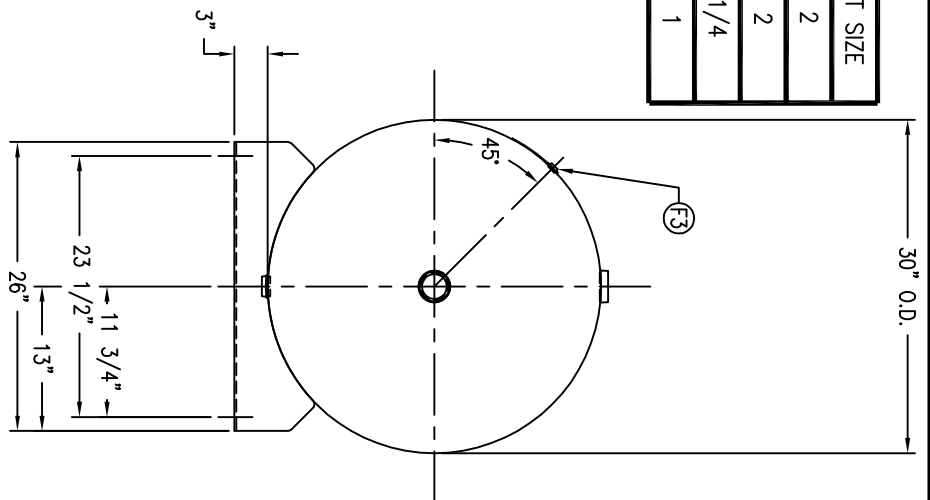


CODE/ADDENDA APPROVED  
 RELEASED FOR PRODUCTION  
 Q.C. \_\_\_\_\_ DATE \_\_\_\_\_



FIND NO.	NPT SIZE
F1	2
F2	2
F3	1/4
F4	1



SYMBOL	DATE	BY	REVISION	APP	XREF	REV.	NOTES
A		KAT		JC			

SPECIFICATIONS		CORR ALW		SH		HD	
O.D.	30	LGTH	84	SH.		MAT'L	
MAMP	200 PSI @ 400 F	HD.		MAT'L			
RT -	MDMT -20 F @ 200 PSI	WT.	510	CUT.	31.3		
EXMT	U620(f) TEST						
XRAY	W						
CRN	V6306.2C						
WELD DETAILS: M-1932							
STD. TOLERANCES (UNLESS OTHERWISE NOTED): M-2461							
LATEST EDITION & ADDENDA							
CODE: ASME SEC. VIII DIV. I							
DRAWN BY: EGB							
APP. BY: JR							
DATE: _____							
SCALE: NONE							
DRAWING NO. 302484							



Q:\3000\

**HORIZONTAL AIR RECEIVER**